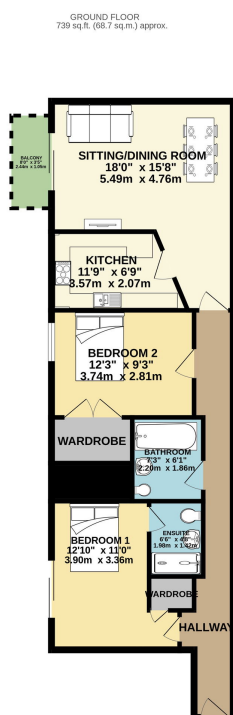


Lisbon house, Chandlery Way, Cardiff,
£190,000

🛏 2 🍽 1 🛋 1



- Stylish First Floor Apartment
- Two Double Bedrooms, Two Bathrooms
- Allocated Parking + Visitor Bays
- Highly Desirable Gated Development – Century Wharf
- Short Walk to Cardiff Bay and City Centre
- Private Balcony off Spacious Lounge
- Ensuite to Master Bedroom
- Exclusive Access to Gym, Pool, and 24-Hour Concierge
- Lift Access and Secure Entry



TOTAL FLOOR AREA: 739 sq.ft. (68.7 sq.m.) approx.
While every attempt has been made to ensure the accuracy of the floorplan contained here, measurements of doors, windows, rooms and any other items are approximate and no responsibility is taken for any error, omissions or misstatements. This plan is for illustrative purposes only and should be used as such by any prospective purchaser. The services, systems and appliances shown have not been tested and no guarantee as to their operability or efficiency can be given.
Made with Homestyler ©2025

Modern Living in a Prime Cardiff Bay Location

Set within the prestigious gated development of Century Wharf, this beautifully presented two-bedroom, two-bathroom first floor apartment combines contemporary comfort with urban convenience. Perfectly located just a short stroll from Cardiff Bay and the city centre, this is an ideal first-time buy, investment, or stylish city base.