

Sarehole Road, Hall Green, Birmingham

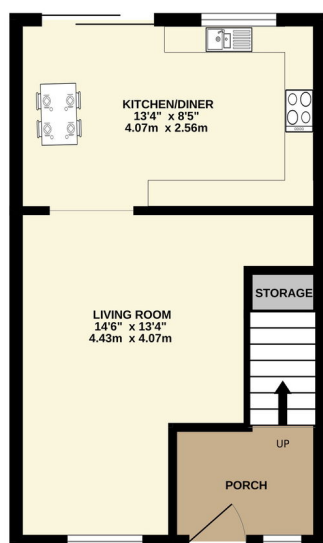
£1

 2  1  1

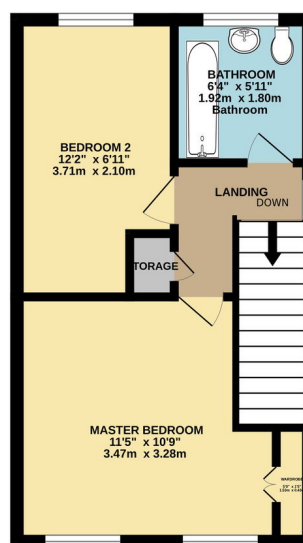


- 2 Bedroom End Terrace with No Chain
- Freehold, Double Glazed, Central Heating
- Ideal for first-time buyers or investors seeking a well-located, low-maintenance property
-
-
- Two good-sized bedrooms, including a front bedroom with built-in storage, and a family bathroom
- Front garden with driveway parking; rear garden featuring a paved patio and artificial grass, accessed via sliding doors
- Driveway for off road parking
-
-

GROUND FLOOR



1ST FLOOR



Whilst every attempt has been made to ensure the accuracy of the floorplan contained herein, measurements of doors, windows, rooms and any other items are approximate and no responsibility is taken for any error, omission or mis-statement. This plan is for illustrative purposes only and should be used as such by any prospective purchaser. The services, systems and appliances shown have not been tested and no guarantee as to their operability or efficiency can be given.
Made with Metropix C5005

Charming 2-Bedroom End Terrace Home on Sarehole Road, Birmingham B28 8ED

Welcome to this delightful 2-bedroom end terrace property situated on the popular Sarehole Road in Birmingham. Offering a fantastic opportunity for both first-time buyers and investors, this home is presented with no chain, ensuring a smooth and swift purchase process.