

Daisy Farm Road, Birmingham

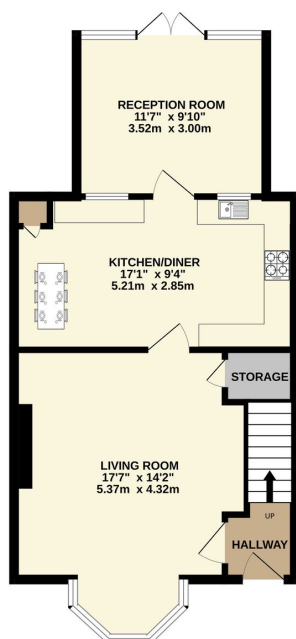
£240,000

3 1 2

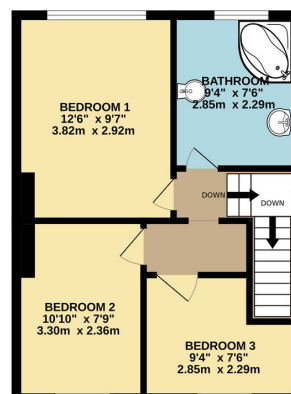


- Double Glazed, Freehold, Central heating
- Ample off-road parking with a large block-paved driveway at the front of the property
- Spacious ground floor with a welcoming entrance hall, large bay-window living room with fireplace, and plush carpeting
- Two Reception Rooms
- Expansive rear garden featuring a paved patio, large lawn, seating area and garden shed—perfect for outdoor family living
- Modern kitchen diner with luxury Karndean flooring, ample storage, and direct access to a versatile second reception room
- Immaculately maintained 3-bedroom end-terraced home located on desirable Daisy Farm Road, Birmingham, B14 4QL

GROUND FLOOR



1ST FLOOR



Whilst every attempt has been made to ensure the accuracy of the floorplan contained here, measurements of doors, windows, rooms and any other items are approximate and no responsibility is taken for any error, omission or mis-statement. This plan is for illustrative purposes only and should be used as such by any prospective purchaser. The services, systems and appliances shown have not been tested and no guarantee as to their operability or efficiency can be given.
Made with Metreplan 12/2015

Discover this stunning 3 bedroom end-terraced residence situated on the desirable Daisy Farm Road in Birmingham, B14 4QL. Beautifully maintained and presented in immaculate condition, this elegant home offers an exceptional blend of modern style, generous living space, and practical features—making it the ideal sanctuary for families seeking both comfort and convenience.