

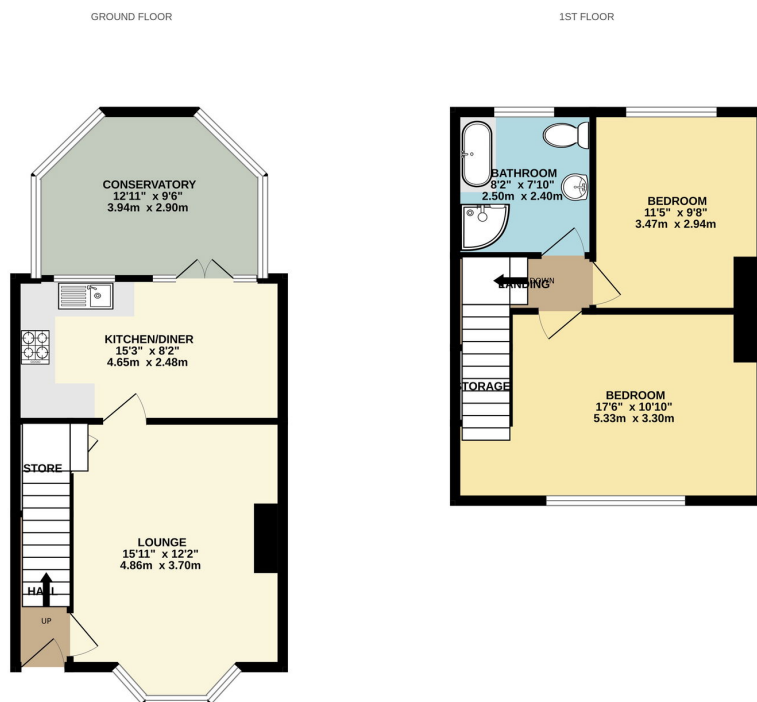
Moorside Road, Birmingham

£200,000

 2  1  1



- Spacious 2-bedroom mid-terrace home on Moorside Road
- Large kitchen diner with space for a dining table and conservatory access
- Two good-sized double bedrooms
- Double Glazed, Freehold, Central Heating
- Generous living room with fireplace and wood laminate flooring
- Fantastic rear garden with large patio and lawn area
- Spacious family bathroom with corner shower and bath
-
-



Whilst every attempt has been made to ensure the accuracy of the floorplan contained herein, measurements of doors, windows, rooms and any other items are approximate and no responsibility is taken for any error, omission or mis-statement. This plan is for illustrative purposes only and should be used as such for any prospective purchase. The contract, systems and appliances shown have not been tested and no guarantee as to their operability or efficiency can be given.
Made with Homestyler ©2025

Exceptional Two-Bedroom Mid-Terrace Home on Moorside Road, Birmingham.

Discover this inviting two-bedroom mid-terrace property located on the sought-after Moorside Road in Birmingham. Offering spacious living accommodation and a delightful rear garden, this home is ideal for first-time buyers or a growing family.