

## The Haven, Birmingham

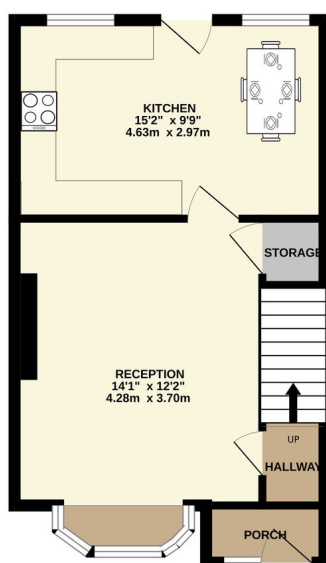
£195,000

3 1 0

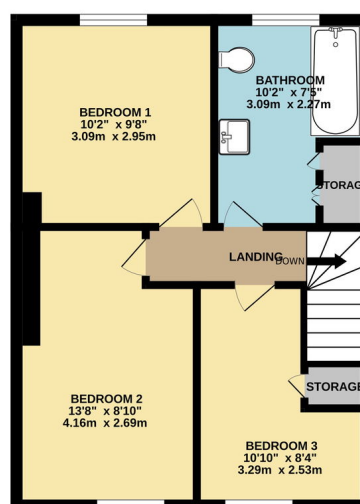


- Double glazing - Porch - Central Heating
- Freehold
- Investment opportunities
- Ideal Location, situated in a quiet close with a large grassy area for safe outdoor play, making it perfect for families
- Driveway for off-Road Parking
- Charming Rear Garden, including a patio, decorative pond, and mature plants
- Spacious Kitchen-Diner, offers ample space for a large dining table and direct access to the rear garden
- Spacious Living Room, features a stunning fireplace for a welcoming atmosphere
- 

GROUND FLOOR  
386 sq.ft. (35.9 sq.m.) approx.



1ST FLOOR  
401 sq.ft. (37.2 sq.m.) approx.



TOTAL FLOOR AREA: 787 sq.ft. (73.1 sq.m.) approx.

Whilst every attempt has been made to ensure the accuracy of the floorplan contained here, measurements of doors, windows, rooms and any other items are approximate and no responsibility is taken for any error, omission or mis-statement. This plan is for illustrative purposes only and should be used as such by any prospective purchaser. The services, systems and appliances shown have not been tested and no guarantee as to their operability or efficiency can be given.  
Made with Metropix C5025

Welcome to this charming mid-terraced 3-bedroom property located on The Haven, Birmingham. This home is perfect for first-time buyers wanting to customise their living space or savvy investors looking to expand their portfolio.