

31 Starbold Crescent, Knowle

Guide Price £825,000

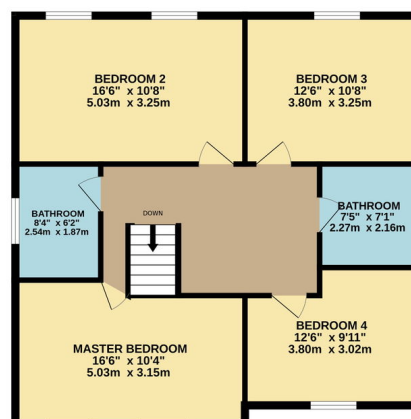
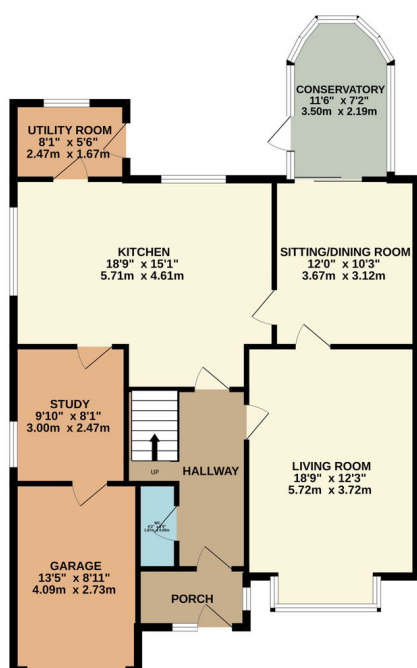
 4  2  3



A Stunning Four-Bedroom Detached Family Home Offering Space, Comfort, and Modern Living

Nestled in a sought-after neighbourhood, this beautifully presented four-bedroom detached property is the perfect blend of contemporary style and practical family living. With spacious interiors, a well-maintained garden, and high-end finishes throughout, this home is ideal for those seeking a property that balances luxury with everyday convenience.

- Four-bedroom detached home boasting generous living spaces ideal for family living and entertaining
- Spacious kitchen designed for socialising, equipped with sleek cabinetry, integrated appliances.
- Two Family bathroom featuring a contemporary suite
- Situated in a desirable neighbourhood near reputable schools, shopping, and excellent transport links,
- Features a charming hallway that leads into well-lit, airy interiors filled with natural light
- Large Block paved Driveway
- Rear garden designed for relaxation and outdoor activities, complete with a low-maintenance lawn and patio
- Additional bedrooms can be adapted for children, guests, or home office use, catering to diverse needs



TOTAL FLOOR AREA: 1888 sq.ft. (175.4 sq.m.) approx.
Whilst every attempt has been made to ensure the accuracy of the floorplan contained here, measurements of doors, windows, rooms and any other items are approximate and no responsibility is taken for any error, omission or mis-statement. This plan is for illustrative purposes only and should be used as such by any prospective purchaser. The services, systems and appliances shown have not been tested and no guarantee as to their operability or efficiency can be given.
Made with Metropix ©2025