




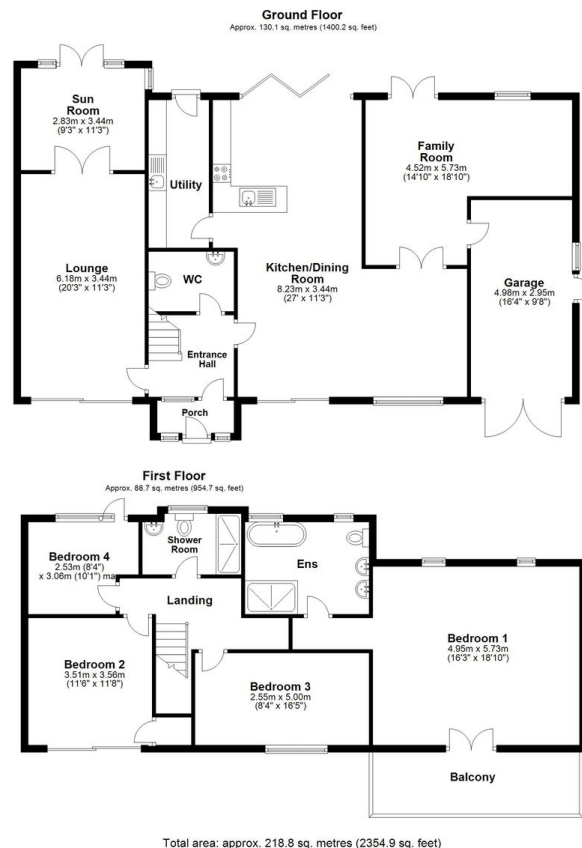
**Whitcliffe Drive, Penarth**

£995,000

 4  3  3



- Sea Views Across to Somerset Coastline
- Private Landscaped Garden
- Walking Distance to Penarth Esplanade
- Off Road Parking on Private Driveway
- Excellent School Catchment Area
- Three Reception Rooms
- Extended and Refurbished by Current Owners
- Four Bedroom Detached Property
- Balcony with Sea Views
- Cliff Tops Location



We are so proud to announce we have this beautiful home for sale on the sought-after Penarth cliff tops, this exceptional detached residence offers an unparalleled blend of luxury, comfort, and breath-taking coastal views. Nestled amidst beautifully manicured front and back gardens, this home is a true sanctuary.