




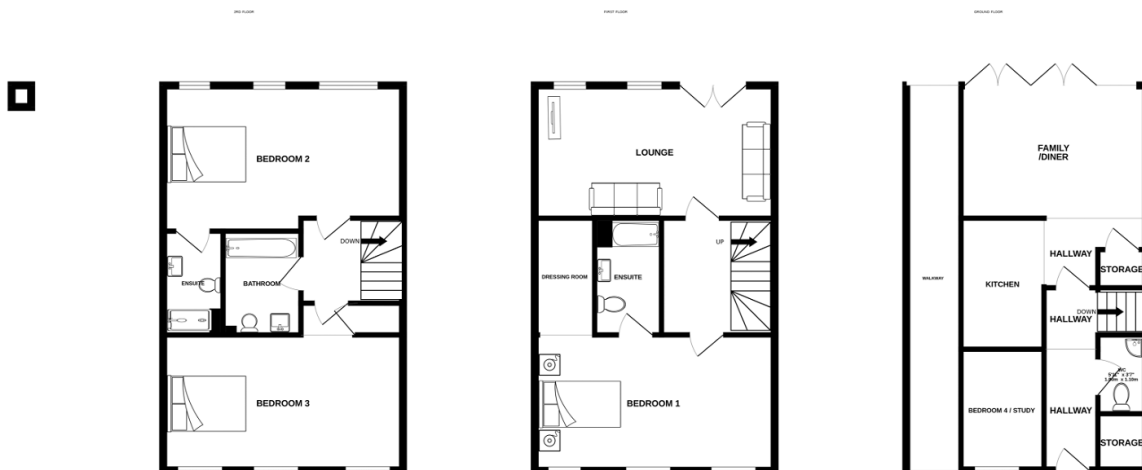
FFordd Wallace, Barry, Vale of Glamorgan

£440,000

 4  3  2



- Luxurious four bedroom townhouse with stunning water Front views.
- NHBC, premier guarantee and LABC
- Excellent rail and road links for convenient commuting to Cardiff and Swansea
- NHBC, premier guarantee and LABC
- Beautiful Welsh coast nearby, perfect for weekend getaways and outdoor adventures
- Two parking spaces provided for private parking,
- Energy efficient homes designed for comfort and lifestyle, featuring ample space, and contemporary decor
- Prime location offering easy access to Barry Island Goodsheds, the vibrant High Street with shops, Cafes and amenities



Whilst every attempt has been made to ensure the accuracy of the floorplan contained here, measurements of doors, windows, rooms and any other items are approximate and no responsibility is taken for any error, omission or mis-statement. This plan is for illustrative purposes only and should be used as such by any prospective purchaser. The services, systems and appliances shown have not been tested and no guarantee as to their operability or efficiency can be given.
Made with Metropix 62024

We are delighted to present to you the exquisite Harbourside at The Quays, Barry's new premier development. This picturesque waterfront location provides a unique blend of luxury and convenience, making it the epitome of modern living.