

The Glenisla

3 Bedroom Home

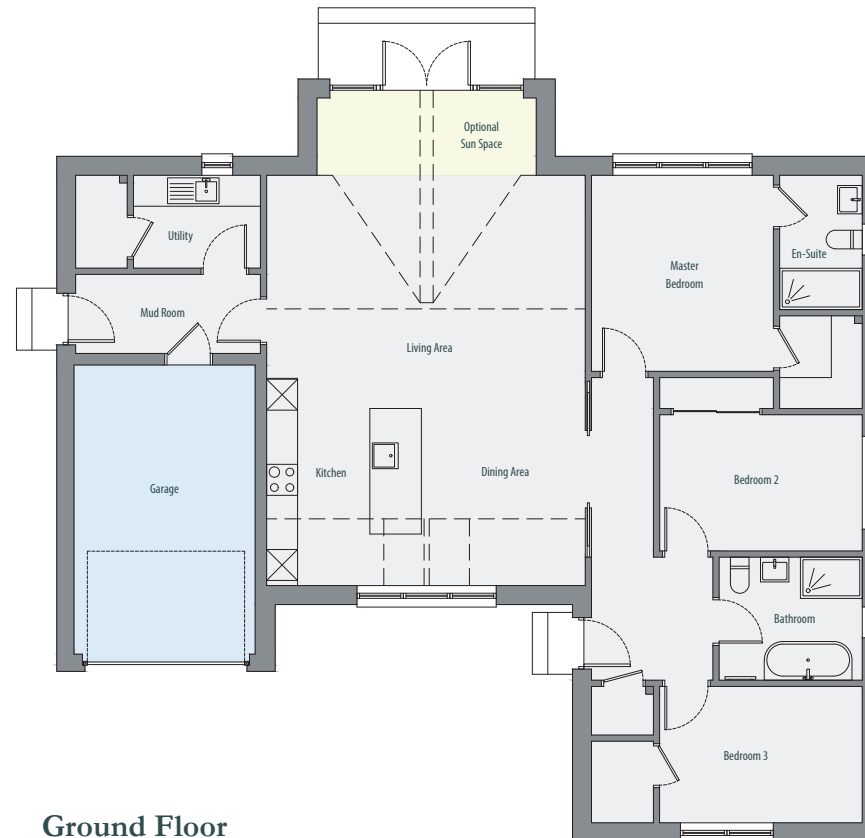
DESCRIPTION

The Glenisla house type is a stunning 3 bedroom detached bungalow with an open plan kitchen / living area in the centre. This home also comes with the possibility of adding a sun space extension to the rear of the property, which helps add an extra wow factor to the living space, with the signature Snowdrop glazed gable and vaulted ceiling design. The generous sized master bedroom features an en-suite and walk-in wardrobe space. The main family bathroom is ideally placed to serve the remaining two bedrooms and guests. At the opposite side of the house is a practical mud room with access into the garden, utility room and integral garage.

Ground Floor Plan

Indicative Room Dimensions

Lounge	3.37m x 6.00m
Kitchen/Dining Area	4.58m x 6.00m
Mud Room	1.45m x 3.75m
Utility Room	1.80m x 2.63m
Master Suite	3.52m x 3.80m
Master En-Suite	2.59m x 1.60m
Bedroom 2	2.64m x 3.92m
Bedroom 3	2.70m x 3.92m
Bathroom	2.32m x 2.73m
Bathroom	2.32m x 2.73m
Garage	3.50m x 5.50m
Optional Sunroom	1.50m x 4.24m



Ground Floor



THE GLENISLA - KITCHEN



THE GLENISLA - LIVING AREA



THE GLENISLA - BATHROOM

Please Note

Information is for guidance only and is subject to change.

07976 896 494

info@snowdropdevelopments.co.uk

www.snowdropdevelopments.co.uk