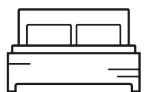




123 City Island Way

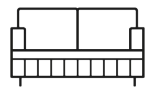
3



2



1



£750 Per week

Apartment - Furnished

Size - 939.00 sq ft

Deposit - £3,750

Let Agreed - 22nd March 2024

Council Tax Band - G

123 City Island Way, London, E14 0TW

£750 Per week

Video viewing also available

3 Double Bedrooms & 2 Luxury Bathrooms (1 En-Suite) | Large Private Terrace | Spectacular Views | Residents' Lounge, 939 sq.ft | Exclusive Development | Gymnasium, Swimming Pool, Spa & Treatment rooms, Jacuzzi, Sauna, Clubhouse, On-Site Grocers, Screening Room, Gardens | 24-hour concierge.
Photos of the bedrooms have been digitally dressed.

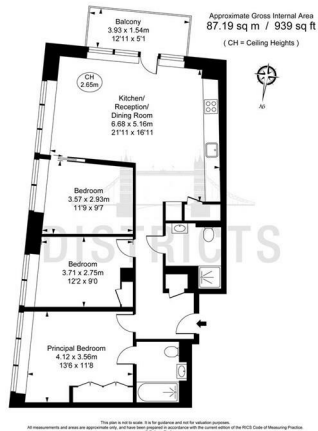
Minimum contract: 6 months
Council tax band : Tower Hamlets - G
Change of contract fee: £50 including VAT
Security Deposit: £3,750 (5 weeks rent)
Holding Deposit: £750 (1 weeks rent)

Available Now / Furnished

Key Information

- 3 Beautiful Bedrooms with 2 luxurious Bathrooms (1 En-Suite)
- 939 sq. ft
- Transport links include the DLR, Jubilee Line and local bus routes all within easy reach.
- Private Terrace
- High Specification Integrated Kitchen
- Open plan reception with Private Terrace
- 24-hour concierge
- Gymnasium, Swimming Pool, Spa & Treatment rooms, Jacuzzi, Sauna, Clubhouse, On-Site Grocers, Screening Room, Gardens.

Floorplan



EPC CERTIFICATE

Energy Efficiency Rating		Current	Potential
Very energy efficient - lower running costs			
(92 plus) A			
(81-91) B			
(69-80) C			
(55-68) D			
(39-54) E			
(21-38) F			
(1-20) G			
Not energy efficient - higher running costs			
England & Wales		EU Directive 2002/91/EC	

Environmental Impact (CO ₂) Rating		Current	Potential
Very environmentally friendly - lower CO ₂ emissions			
(92 plus) A			
(81-91) B			
(69-80) C			
(55-68) D			
(39-54) E			
(21-38) F			
(1-20) G			
Not environmentally friendly - higher CO ₂ emissions			
England & Wales		EU Directive 2002/91/EC	

