



106 Meridian Place, London, E14 9FF

£2,700 Per month

 2  2  1  B



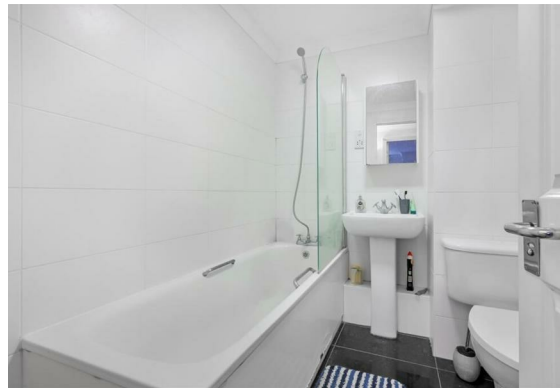
Districts London are proud to present this stunning two-bedroom apartment with Panoramic Water views located in Canary Wharf. This spacious and beautifully presented apartment offers modern living with breath-taking scenery. The property features tasteful, contemporary furnishings throughout making it perfect for entertaining or relaxing while enjoying the impressive waterside outlook. It also boasts a separate, fully fitted kitchen equipped with modern appliances, including a ceramic induction hob, offering both style and practicality. Not to mention there are also two generous double bedrooms, one of which benefits from an en-suite bathroom. Photos have been digitally dressed for example purposes.

The Meridian Place development is within walking distance of South Quay DLR Station and Canary Wharf Underground Station (Jubilee line and Elizabeth Line), providing excellent transport links into the city and beyond. This beautiful apartment combines space, light, and an unbeatable location ideal for professionals or anyone seeking vibrant Docklands living with tranquil views.

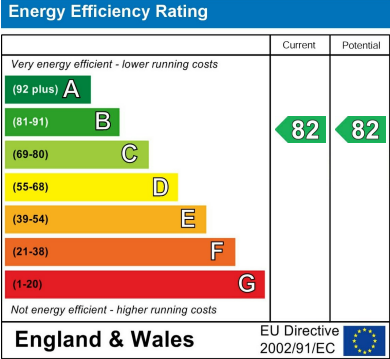
Council Tax Band: Tower Hamlets - F
 Minimum contract: 12 months
 Change of contract fee: £50 including VAT
 Holding Deposit - £646 (1 weeks rent, subject to agreed offer)

Electricity supply – Mains | Cold Water supply – Mains | Sewerage – Mains | Hot water & Heating – Mains |

To check broadband and mobile phone coverage please visit Ofcom.
 To check planning permission please visit Tower Hamlets Council Planning & Building







These particulars, whilst believed to be accurate are set out as a general outline only for guidance and do not constitute any part of an offer or contract. Intending purchasers should not rely on them as statements of representation of fact, but must satisfy themselves by inspection or otherwise as to their accuracy. No person in this firms employment has the authority to make or give any representation or warranty in respect of the property.