



Penthouse - Elephant & Castle
£8,000 Per month

 3  3  1  C

Districts London are proud to present this sensational 3 Bedroom Penthouse in Elephant and Castle.

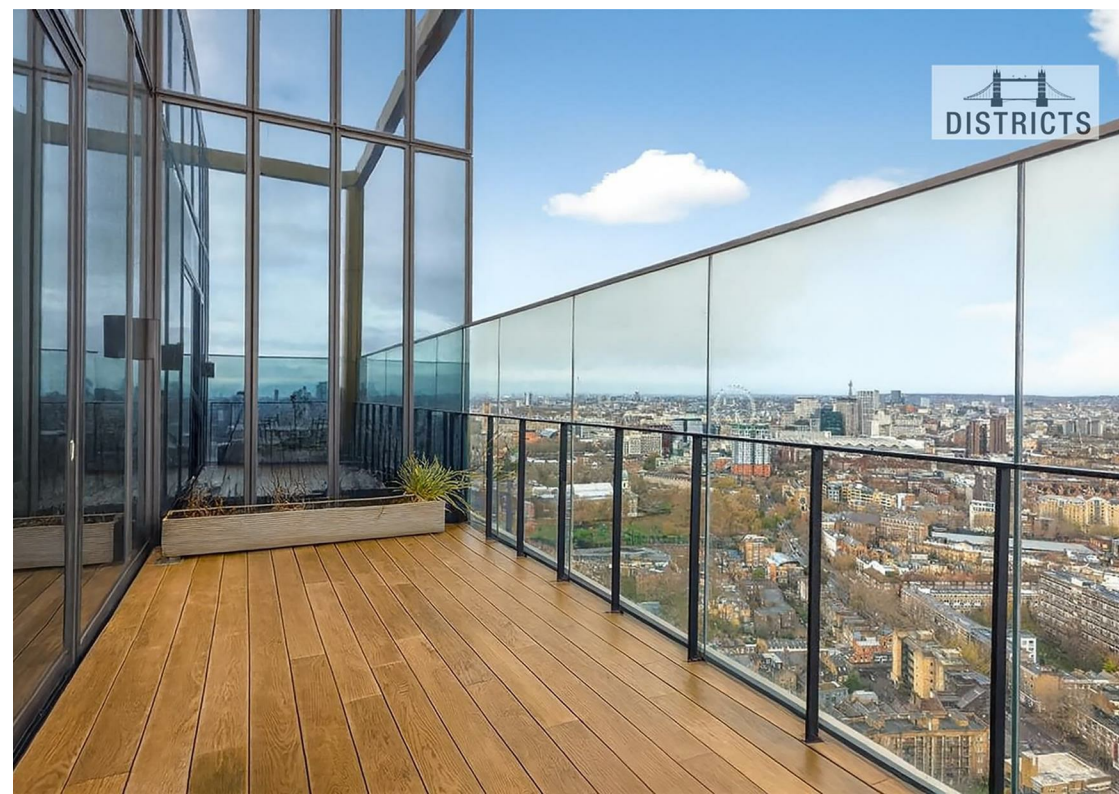
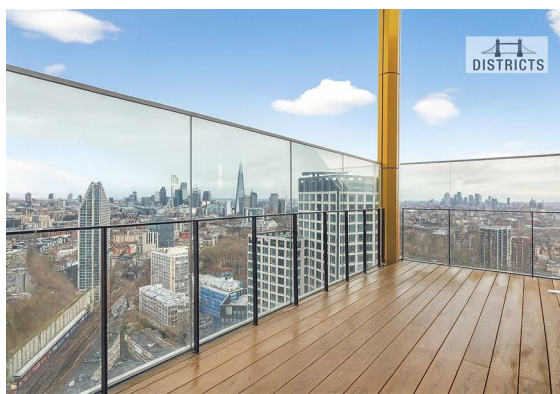
This sublime Penthouse boasts Panoramic City Views which makes every moment a breath-taking memory. This impressive high rise new build also possesses floor to ceiling windows and attractive reception space.

**** Photos have been digitally dressed for example purposes.**

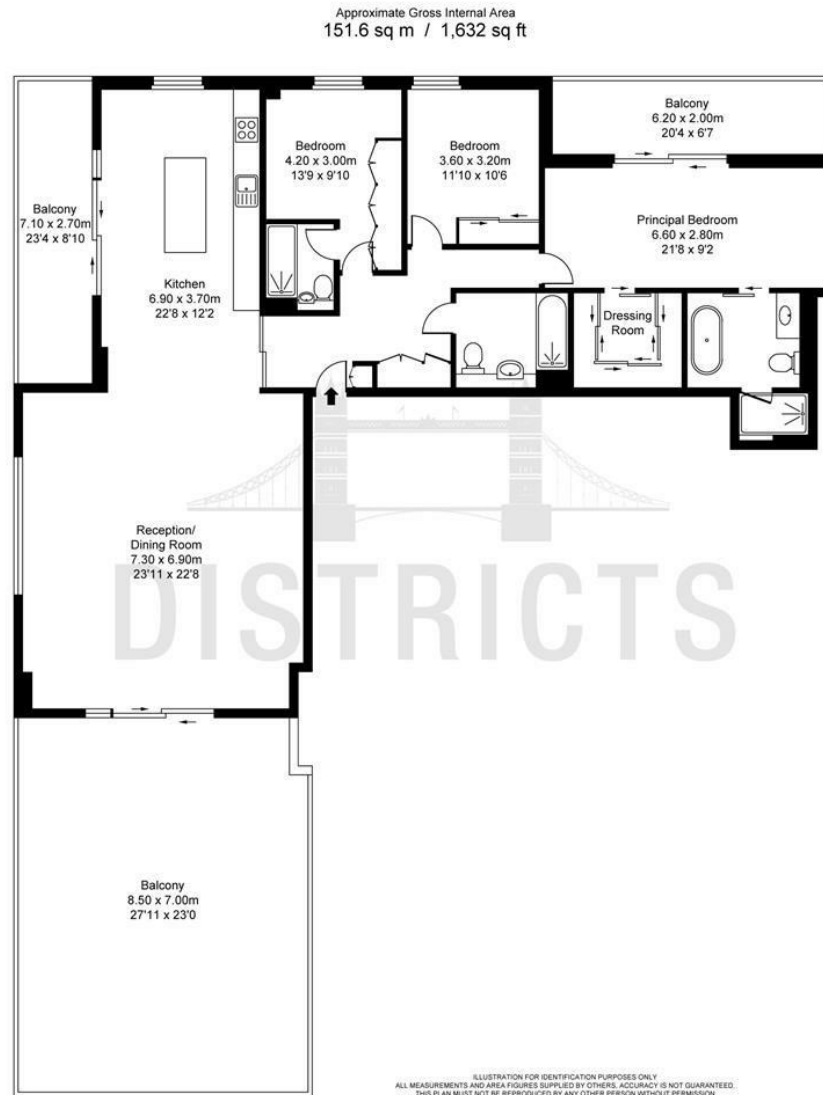
With Chic Finishes, Generous storage space and Excellent transport links this penthouse is not one to miss. Residents also benefit having two balconies which not only optimises natural light but also offers increased privacy for those needing down-time. Located on the Renowned and well positioned St Gabriel's Walk transport into the city is on your doorstep with Elephant and Castle station a stone throw away. Furthermore there is a range of local amenities such as the Imperial War Museum and Vibrant Food outlets.

Minimum contract: 12 months
Council tax band: Southwark G
Change of contract fee: £50 including VAT
Lift access | Cladding: EWS1 Certificate available
Holding Deposit: £1,846 (1 weeks rent)

Electricity supply – Mains | Cold Water supply – Mains | Sewerage – Mains | Hot water, heating & comfort cooling –Mains | | Internet: Fttp







Energy Efficiency Rating		
	Current	Potential
Very energy efficient - lower running costs		
(92 plus) A		
(81-91) B		
(69-80) C	80	80
(55-68) D		
(39-54) E		
(21-38) F		
(1-20) G		
Not energy efficient - higher running costs		
England & Wales		EU Directive 2002/91/EC

These particulars, whilst believed to be accurate are set out as a general outline only for guidance and do not constitute any part of an offer or contract. Intending purchasers should not rely on them as statements of representation of fact, but must satisfy themselves by inspection or otherwise as to their accuracy. No person in this firms employment has the authority to make or give any representation or warranty in respect of the property.