



**1004 Barnacle House 1 Hemlock Street, London, E14 0YW**

**£438 Per week**

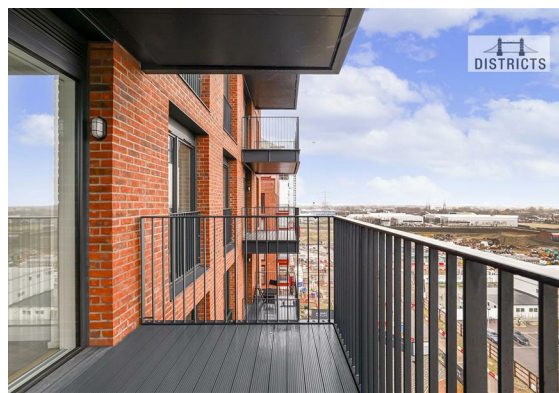




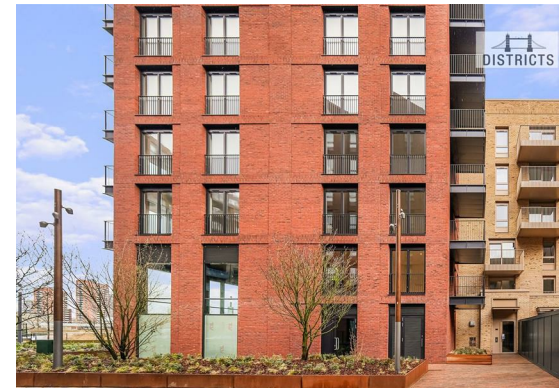
Stunning New one bedroom set within Barnacle House, Poplar Riverside Development. The property comprises, 511sq.ft of living space, modern open plan kitchen living area, luxury bathroom, great storage, double bedroom with built-in wardrobes, stylish furnishings and a large private balcony with stunning water views. Photos are of a similar property.

£1,900pcm | Available Now | Furnished

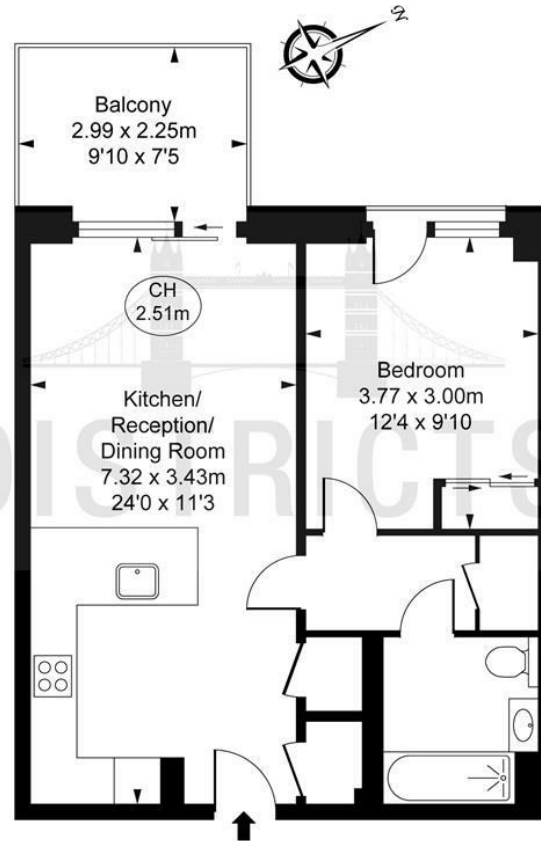
Electricity supply – Mains | Water supply – Mains | Sewerage – Mains | Heating – Underfloor heating  
To check broadband and mobile phone coverage please visit Ofcom.  
Holding Deposit 1 weeks rent | Deposit Payable 5 weeks rent  
EPC Rating: B  
Council Tax Band: D, Tower Hamlets  
Change of contract fee: £50 including VAT  
Lift access | Cladding: EWS1 Certificate available







**Barnacle House, E14**  
 Approximate Gross Internal Area  
**47.68 sq m / 513 sq ft**  
 ( CH = Ceiling Heights )



This plan is not to scale. It is for guidance and not for valuation purposes.  
 All measurements and areas are approximate only, and have been prepared in accordance with the current edition of the RICS Code of Measuring Practice.  
 © Fulham Performance

Energy Efficiency Rating		
	Current	Potential
Very energy efficient - lower running costs		
(92 plus) <b>A</b>		
(81-91) <b>B</b>	<b>84</b>	<b>84</b>
(69-80) <b>C</b>		
(55-68) <b>D</b>		
(39-54) <b>E</b>		
(21-38) <b>F</b>		
(1-20) <b>G</b>		
Not energy efficient - higher running costs		
<b>England &amp; Wales</b>		EU Directive 2002/91/EC

These particulars, whilst believed to be accurate are set out as a general outline only for guidance and do not constitute any part of an offer or contract. Intending purchasers should not rely on them as statements of representation of fact, but must satisfy themselves by inspection or otherwise as to their accuracy. No person in this firms employment has the authority to make or give any representation or warranty in respect of the property.