



**68 Belvedere Row Apartments Fountain Park Way, London,
W12 7JF**

 2  2  1  B

A luxurious two bedroom, two bathroom apartment situated in a prime location just moments from White City & Wood Lane Underground Stations and Westfield shopping centre.

Resident benefit from stunning communal facilities which include a 24 hour concierge, swimming pool and gym, in addition to a private residents lounge and meeting room.

*Photos have been digitally staged for marketing purposes.

Council Tax Band: Hammersmith and Fulham F

Minimum contract: 12 months

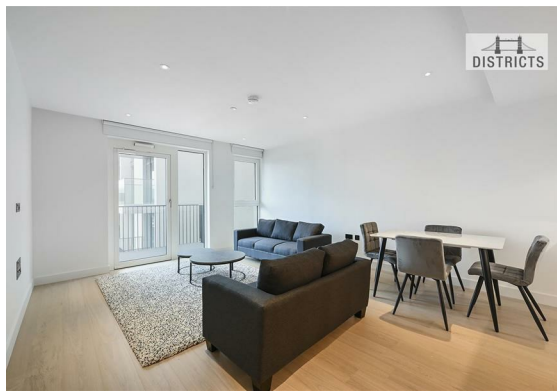
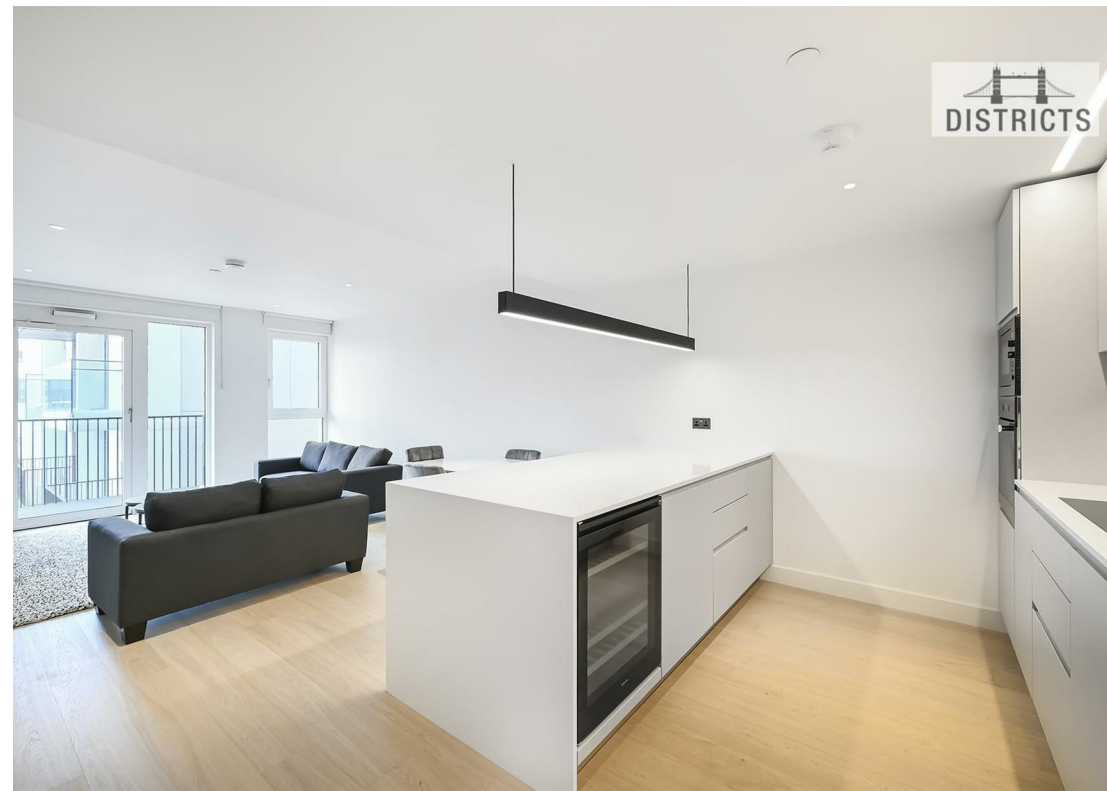
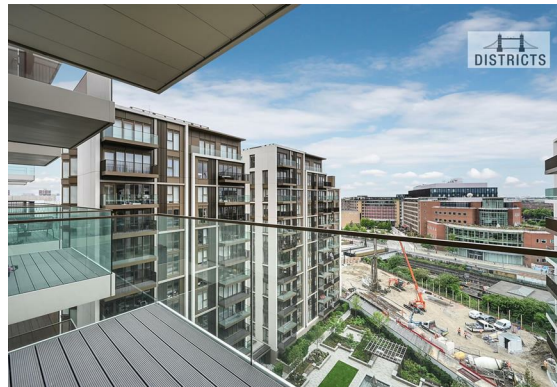
Change of contract fee: £50 including VAT
Lift access | Cladding: EWS1 Certificate available

Holding Deposit - £850 (1 weeks rent, subject to agreed offer)

Electricity supply – Mains | Cold Water supply – Mains | Sewerage – Mains | Hot water, heating & comfort cooling – Mains | Internet: Fibre

To check broadband and mobile phone coverage please visit Ofcom.

To check planning permission please visit Hammersmith and Fulham Council Website, Planning & Building Control





Belvedere Apartments,
White City, W12
Approximate Gross Internal Area
87.30 sq m / 940 sq ft

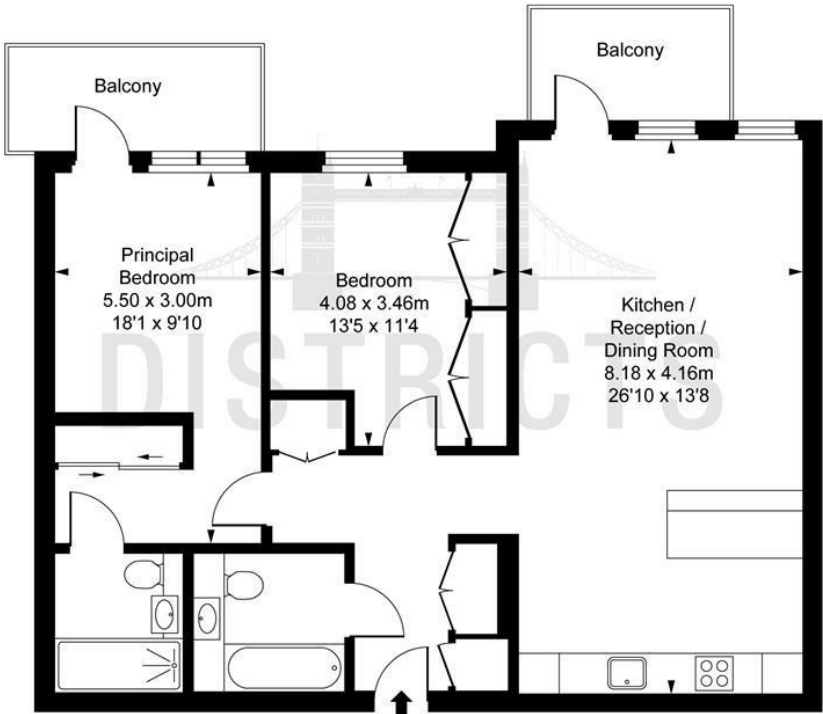


ILLUSTRATION FOR IDENTIFICATION PURPOSES ONLY
ALL MEASUREMENTS AND AREA FIGURES SUPPLIED BY OTHERS, ACCURACY IS NOT GUARANTEED.
THIS PLAN MUST NOT BE REPRODUCED BY ANY OTHER PERSON WITHOUT PERMISSION

Energy Efficiency Rating		
	Current	Potential
Very energy efficient - lower running costs		
(92 plus) A	87	87
(81-91) B		
(69-80) C		
(55-68) D		
(39-54) E		
(21-38) F		
(1-20) G		
Not energy efficient - higher running costs		
England & Wales		EU Directive 2002/91/EC

These particulars, whilst believed to be accurate are set out as a general outline only for guidance and do not constitute any part of an offer or contract. Intending purchasers should not rely on them as statements of representation of fact, but must satisfy themselves by inspection or otherwise as to their accuracy. No person in this firms employment has the authority to make or give any representation or warranty in respect of the property.