



Flat 1403, 2 Principal Place, Worship Street, London, EC2A
2FD

 1  1  1  B



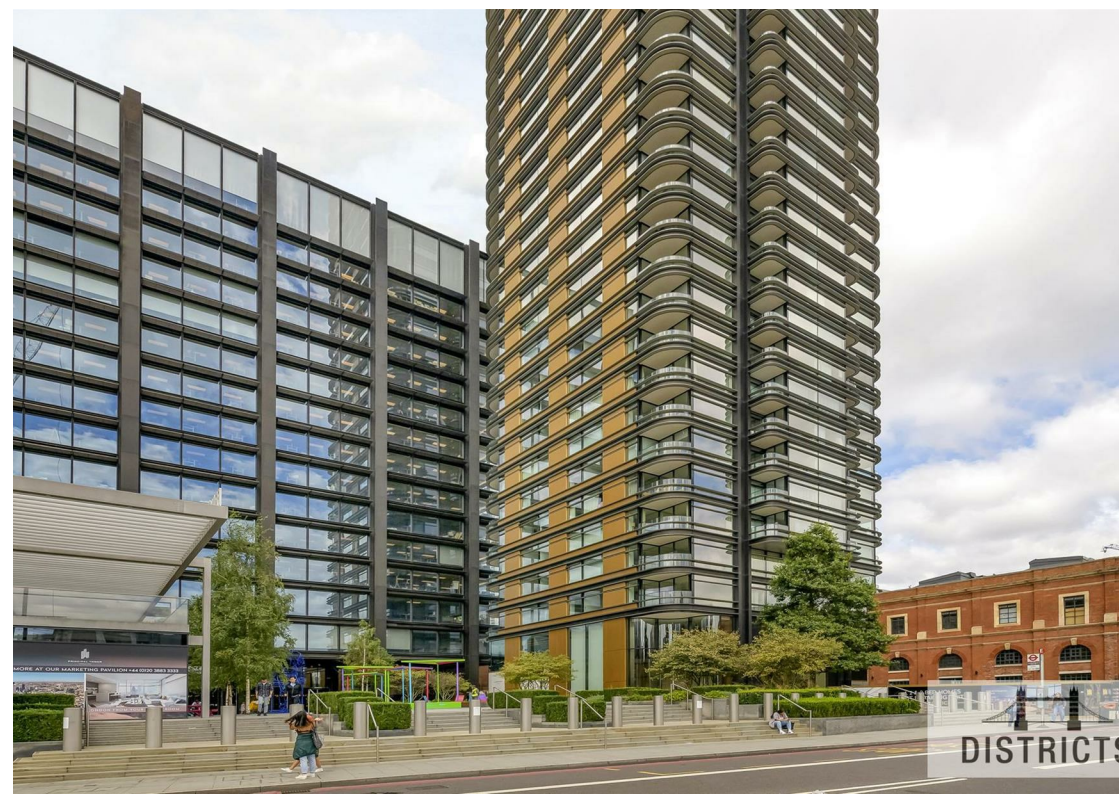
A luxurious one bedroom apartment situated in the heart of City and Shoreditch, a five minute walk from Liverpool Street Station. Beautifully designed by Foster & Partners, this contemporary property benefits from comfort cooling, high specification appliances such as a dishwasher and a combination washer/dryer in addition to a private balcony.

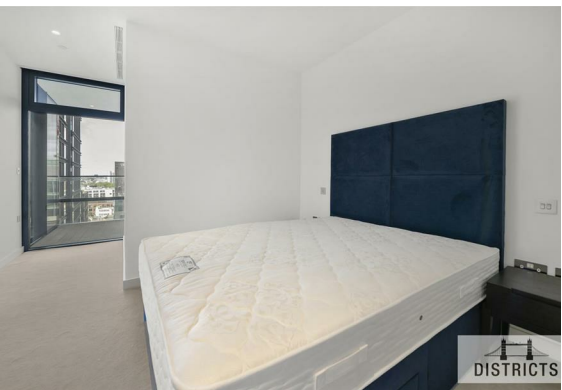
Principal Tower offers its residents an wonderful array of resident facilities which include a 24 hour concierge service, swimming pool & gym, residents lounges and cinema,
Available 23/06/2025

Council Tax Band: Hackney - E
Minimum contract: 12 months
Change of contract fee: £50 including VAT
Lift access
Holding Deposit - £800 (1 weeks rent, subject to agreed offer)

Electricity supply – Mains | Cold Water supply – Mains | Sewerage – Mains | Heating – Communal | Internet: FTTP

To check broadband and mobile phone coverage please visit Ofcom.
To check planning permission please visit Hackney Council Website, Planning & Building Control





Principal Tower,
Principal Place,
Worship Street, EC2A

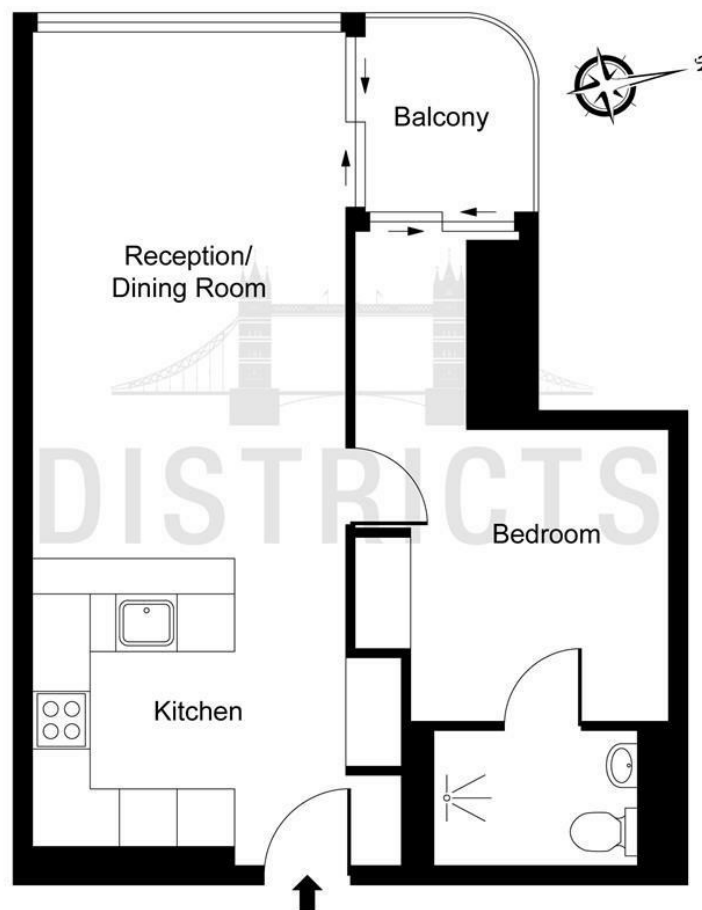


ILLUSTRATION FOR IDENTIFICATION PURPOSES ONLY
ALL MEASUREMENTS AND AREA FIGURES SUPPLIED BY OTHERS. ACCURACY IS NOT GUARANTEED.
THIS PLAN MUST NOT BE REPRODUCED BY ANY OTHER PERSON WITHOUT PERMISSION

Energy Efficiency Rating		
	Current	Potential
Very energy efficient - lower running costs		
(92 plus) A		
(81-91) B	84	84
(69-80) C		
(55-68) D		
(39-54) E		
(21-38) F		
(1-20) G		
Not energy efficient - higher running costs		
England & Wales	EU Directive 2002/91/EC	

These particulars, whilst believed to be accurate are set out as a general outline only for guidance and do not constitute any part of an offer or contract. Intending purchasers should not rely on them as statements of representation of fact, but must satisfy themselves by inspection or otherwise as to their accuracy. No person in this firms employment has the authority to make or give any representation or warranty in respect of the property.