



2006 10 Park Drive, London, E14 9ZW

Asking price £845,000

 1  1  1  B

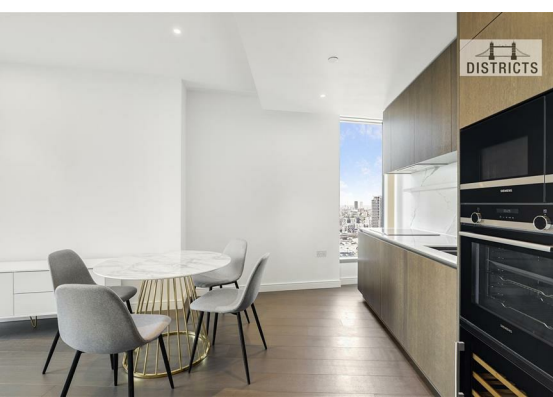
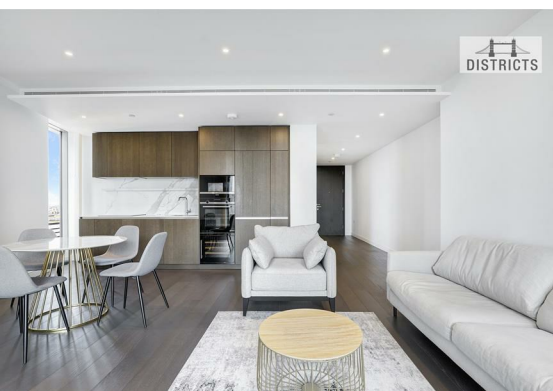
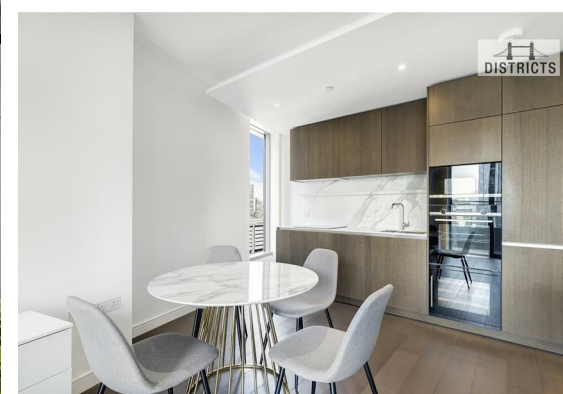
Spacious one bedroom property, offering stunning views and located at 10 Park Drive is available to view. The facilities offer a High-End lifestyle for those moving in the fast lane. Located just a few moments from the heart of London's fastest growing business district, 10 Park Drive is well connected with direct access to Canary Wharf Underground / DLR / Crossrail (Elizabeth Line). Residents enjoy access to the exclusive facilities, including Third Space Gym, cinema, residents lounge, club room, private residents roof terrace and 24hr concierge.

Leasehold: 236 Years remaining approximately
 Ground rent amount: £550pa Approx.
 Review period: Ask agent
 Service charge amount: £7,337pa Approx.
 Review period: Ask Agent
 Council tax band: E – Tower Hamlets

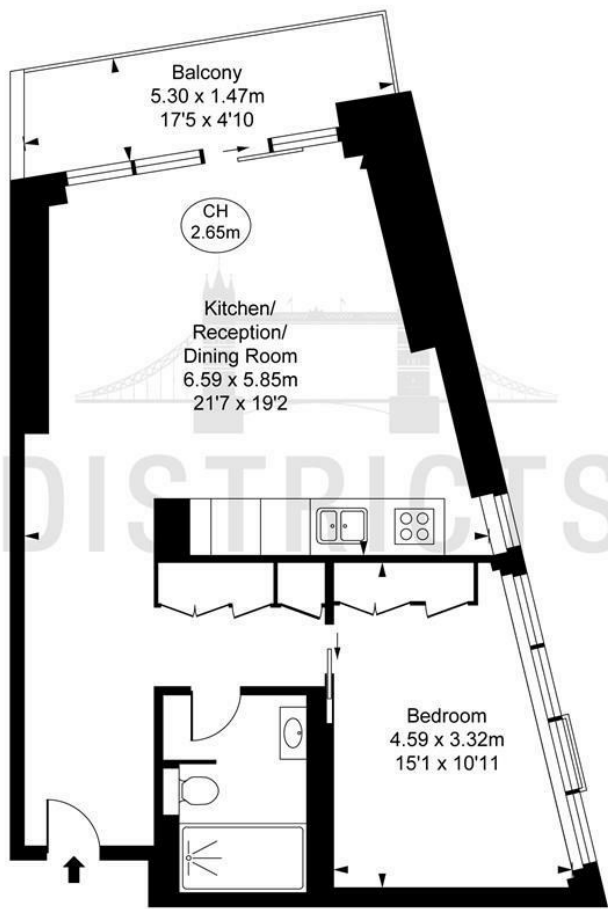
Electricity supply – Mains | Heating – Mains | Water Supply & Sewerage – Mains | Lift Access | Cladding: EWS1 Cert. available

To check broadband and mobile phone coverage please visit Ofcom
 To check planning permission please visit Tower Hamlets Council Website, Planning & Building Control





Park Drive, E14
Approximate Gross Internal Area
62.71 sq m / 675 sq ft
(CH = Ceiling Heights)



This plan is not to scale. It is for guidance and not for valuation purposes.
All measurements and areas are approximate only, and have been prepared in accordance with the current edition of the RICS Code of Measuring Practice.
© Fulham Performance

Energy Efficiency Rating		
	Current	Potential
Very energy efficient - lower running costs		
(92 plus) A	84	84
(81-91) B		
(69-80) C		
(55-68) D		
(39-54) E		
(21-38) F		
(1-20) G		
Not energy efficient - higher running costs		
England & Wales		EU Directive 2002/91/EC

These particulars, whilst believed to be accurate are set out as a general outline only for guidance and do not constitute any part of an offer or contract. Intending purchasers should not rely on them as statements of representation of fact, but must satisfy themselves by inspection or otherwise as to their accuracy. No person in this firms employment has the authority to make or give any representation or warranty in respect of the property.