



**71 Parliament House 81 Black Prince Road, London, SE1
7SZ**

 1  1  1  B

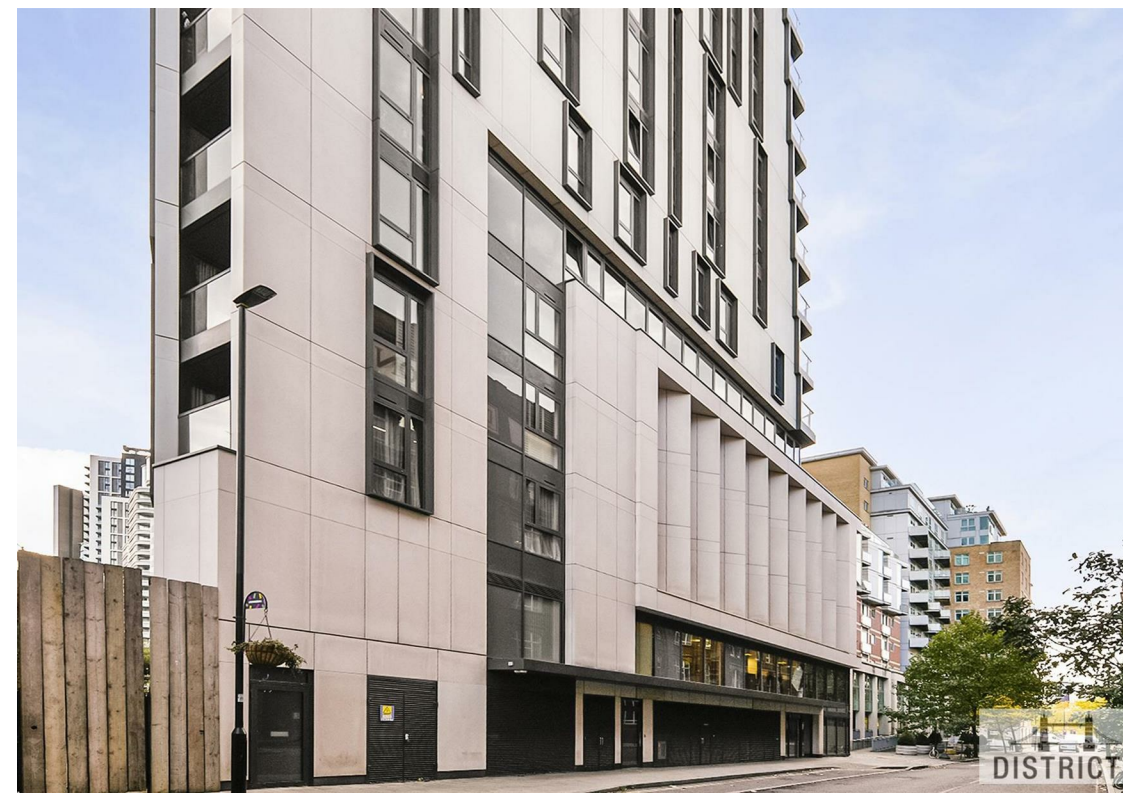
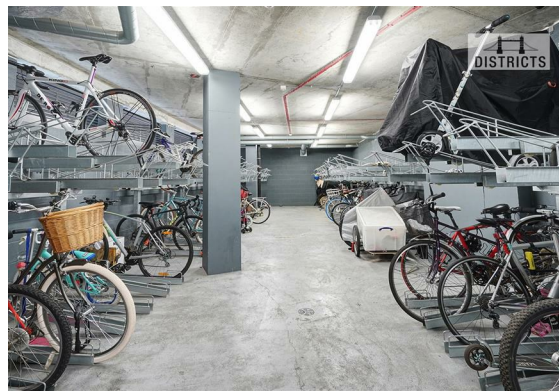
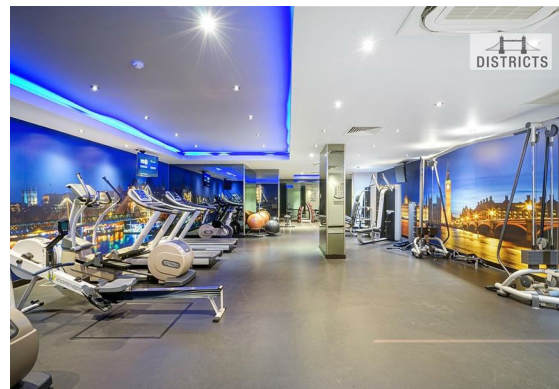
Stunning Views | Bedroom | Bright Interiors | Contemporary Finish | Residents' Gym | Hour Concierge | Close to Vauxhall Station | Nine Elms Station | Private Balcony

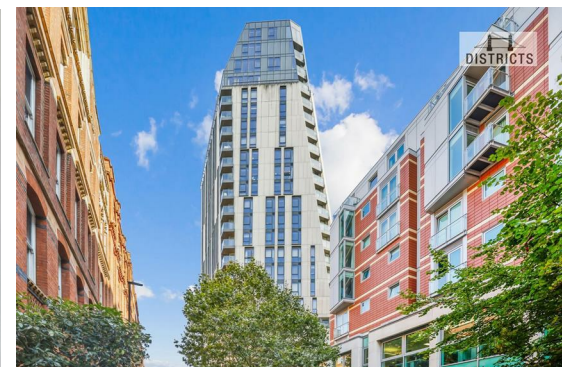
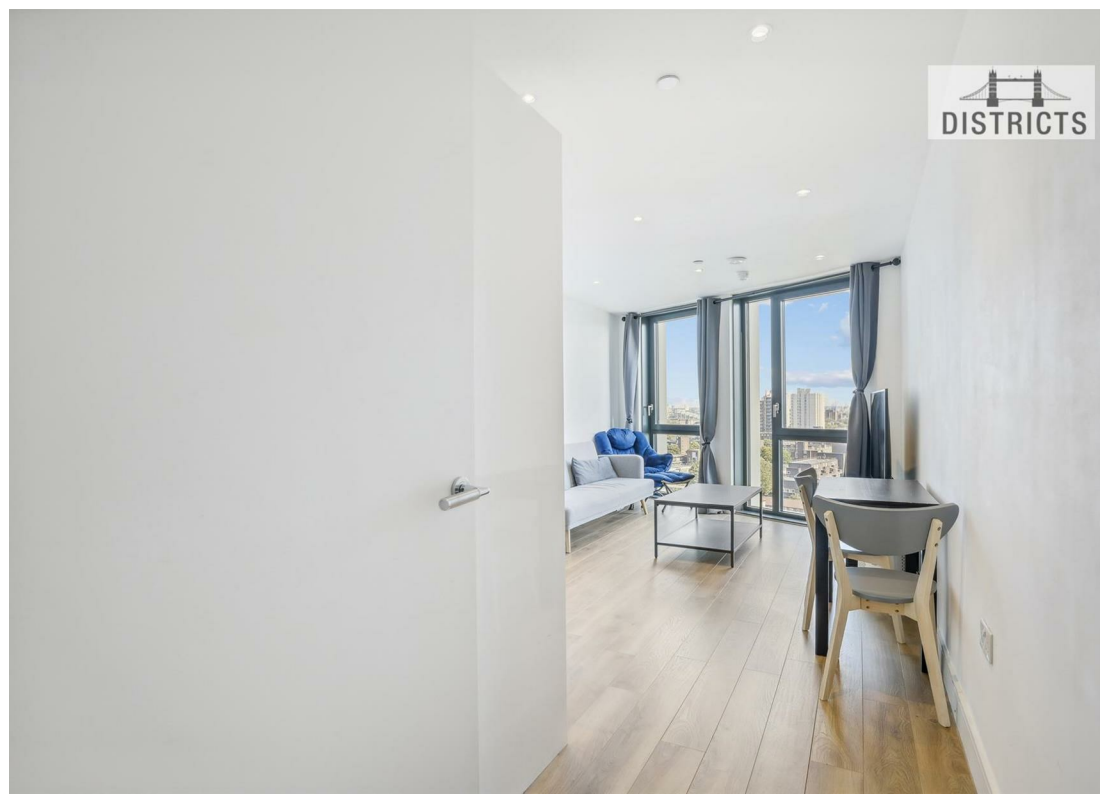
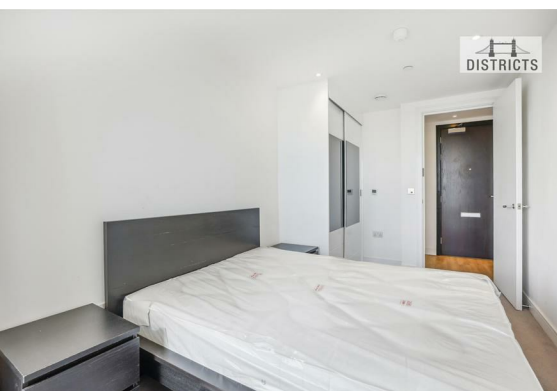
Stunning one bedroom apartment is now available to rent. This bright dual-aspect apartment further benefits from its own private balconies, a concierge, private residents' gymnasium, cycle storage and communal roof terrace. The property comprises an open plan reception with modern integrated kitchen, a double bedroom and a luxury bathroom. Located in central London and within walking distance of the South bank with a variety of lovely restaurants, Borough Market, and unique shopping experiences. Parliament House is also well connected with Waterloo, Westminster and Vauxhall and Nine Elms underground stations. Offered Furnished and Photos of a similar apartment.

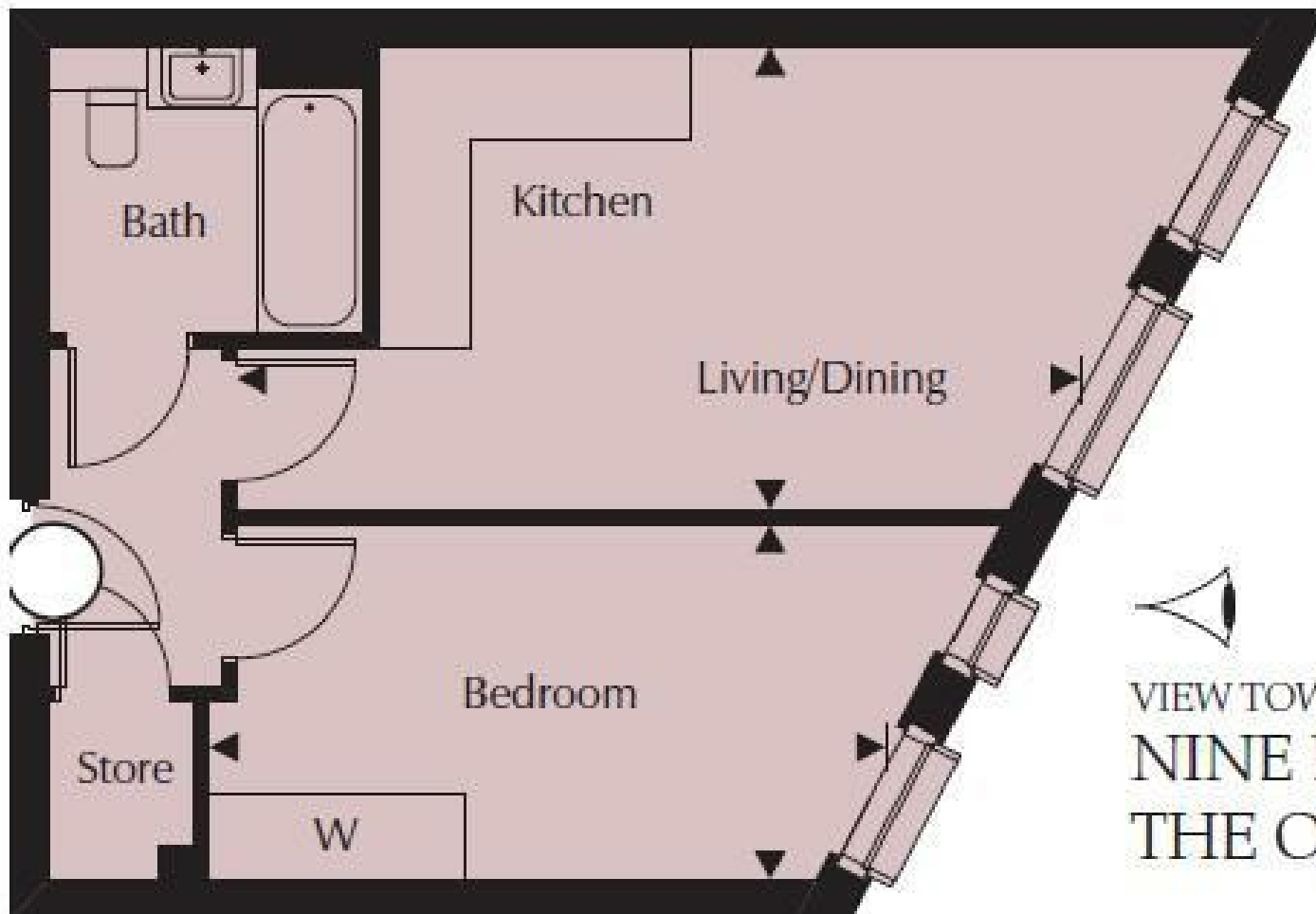
Council Tax Band: Lambeth, E
Minimum contract: 12 months
Change of contract fee: £50 including VAT
Lift access | Cladding: EWS1 Certificate available
Holding Deposit - £465 (1 weeks rent, subject to agreed offer)

Electricity supply – Mains | Cold Water supply – Mains | Sewerage – Mains | Hot water & heating - Mains | Internet: Fibre

To check broadband and mobile phone coverage please visit Ofcom.
To check planning permission please visit Lambeth Council Website, Planning & Building Control







Energy Efficiency Rating		
	Current	Potential
Very energy efficient - lower running costs		
(92 plus) A		
(81-91) B	81	81
(69-80) C		
(55-68) D		
(39-54) E		
(21-38) F		
(1-20) G		
Not energy efficient - higher running costs		
England & Wales		EU Directive 2002/91/EC

VIEW TOWARDS
NINE ELMS &
THE OVAL

Total Area **40.4 sq m** **435 sq ft**

These particulars, whilst believed to be accurate are set out as a general outline only for guidance and do not constitute any part of an offer or contract. Intending purchasers should not rely on them as statements of representation of fact, but must satisfy themselves by inspection or otherwise as to their accuracy. No person in this firm's employment has the authority to make or give any representation or warranty in respect of the property.