



**602 Echo House 89 City Island Way, London, E14 0TT**  
**Offers in excess of £425,000**

 1  1  1  B



A beautiful and modern one bedroom apartment situated in the London City Island development. The property benefits from a spacious balcony with great views. The development is located only moments away from Canning Town tube station.

Residents can take advantage of the stunning communal amenities such as the residents pool, gym and clubhouse, in addition to a 24 hour concierge service.

Approximately 988 years remaining on lease

Ground rent amount: £500.00

Ground rent review period: Ask agent

Service charge amount: approx.

£4,605.68pa

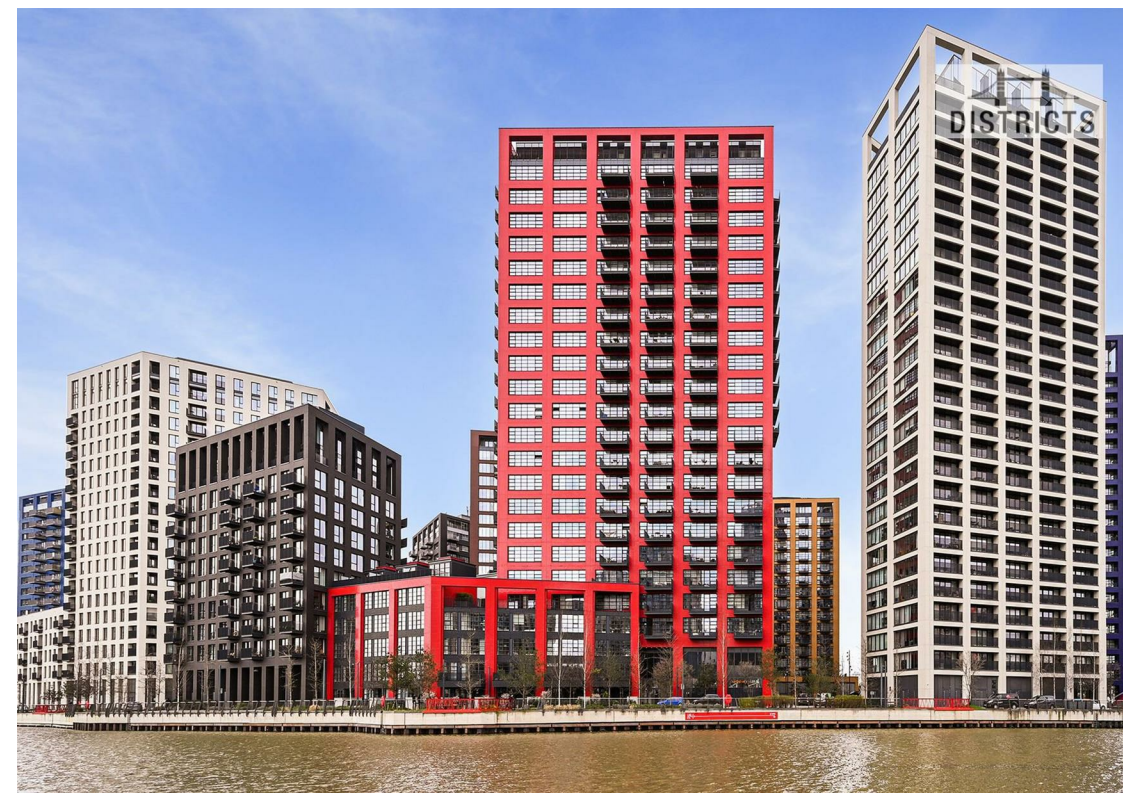
Service charge review period: N/A

Council tax band: D (Tower Hamlets)

Electricity supply – Mains | Heating – Mains | Water supply – Mains | Sewerage – Mains | Internet: Fibre | Lift Access | No Parking | Cladding: EWS1 Certificate available

To check broadband and mobile phone coverage please visit Ofcom.

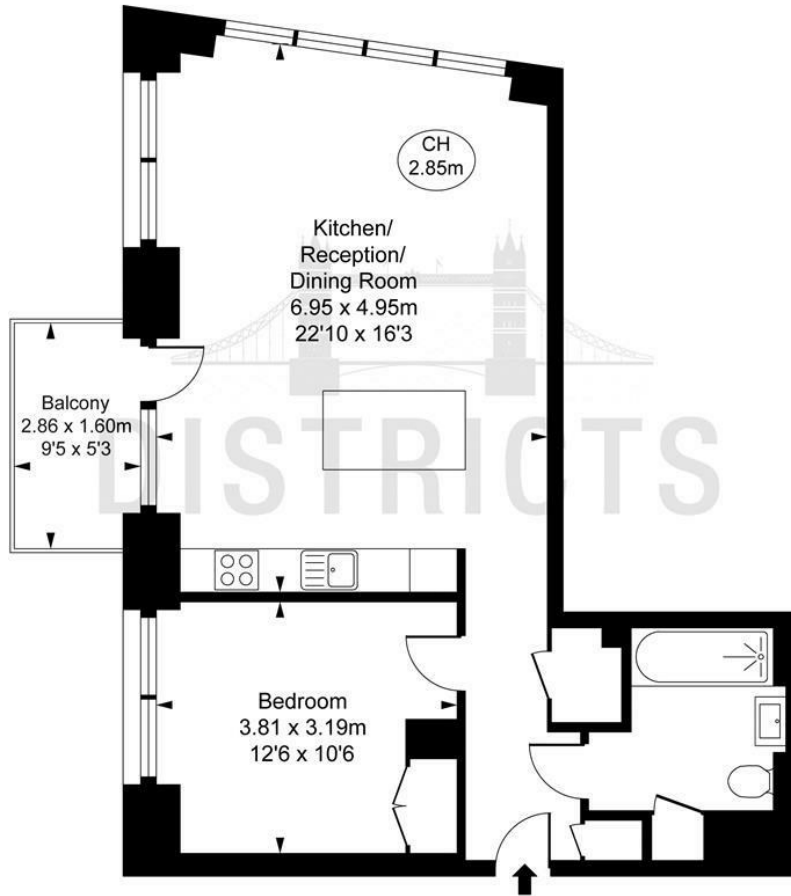
To check planning permission please visit Tower Hamlets Council Website, Planning & Building Control.







Echo House,  
City Island Way, E14  
Approximate Gross Internal Area  
57.09 sq m / 615 sq ft  
( CH = Ceiling Heights )



This plan is not to scale. It is for guidance and not for valuation purposes.  
All measurements and areas are approximate only, and have been prepared in accordance with the current edition of the RICS Code of Measuring Practice.  
© Fulham Performance

Energy Efficiency Rating		
	Current	Potential
Very energy efficient - lower running costs		
(92 plus) A		
(81-91) B	81	81
(69-80) C		
(55-68) D		
(39-54) E		
(21-38) F		
(1-20) G		
Not energy efficient - higher running costs		
England & Wales		EU Directive 2002/91/EC

These particulars, whilst believed to be accurate are set out as a general outline only for guidance and do not constitute any part of an offer or contract. Intending purchasers should not rely on them as statements of representation of fact, but must satisfy themselves by inspection or otherwise as to their accuracy. No person in this firms employment has the authority to make or give any representation or warranty in respect of the property.