



1507 Evergreen Point, London, E15 3FQ

Asking price £475,000



Investment opportunity to own this spacious one bedroom apartment in the TwelveTrees development by Berkeley Group!

Located just a few moments from the heart of London's fastest growing business district, you are equally well connected, accessing London in a matter of minutes via Circle. District, Hammersmith, Jubilee lines and DLR.

Anticipated Completion: Q2, 2025.

Located on the 15th floor, the property comprises, modern open plan kitchen living area, luxury bathroom, great storage, and double bedroom with built-in wardrobes.

Residents enjoy the exclusive use of the world -class facilities which all form part of the exclusive experience, including Cinema, Spa, Residents Lounge, restaurants, cafés, 24 hr Concierge, Gym and Swimming Pool and much more.

You will complete the purchase directly with the developer.

Electricity supply – Mains | Water supply – Mains | Sewerage – Mains | Heating – Underfloor heating

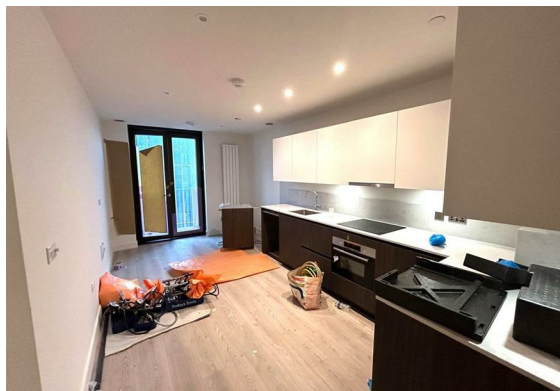
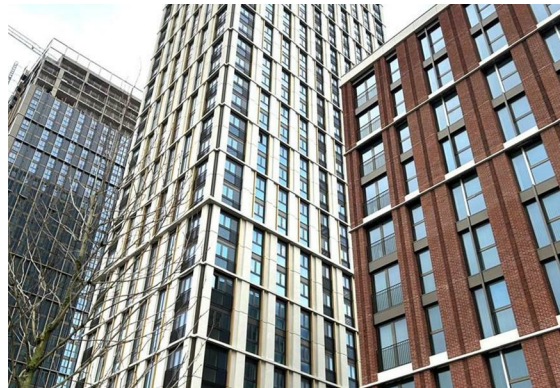
To check broadband and mobile phone coverage please visit Ofcom

To check planning permission please visit the councils website, Planning & Building Control

EPC Rating: New Build

Council Tax Newham Council: New Build

Leasehold: 999 Years | Service Charge: £5.99 / Sq.ft | Ground Rent: Peppercorn





These particulars, whilst believed to be accurate are set out as a general outline only for guidance and do not constitute any part of an offer or contract. Intending purchasers should not rely on them as statements of representation of fact, but must satisfy themselves by inspection or otherwise as to their accuracy. No person in this firm's employment has the authority to make or give any representation or warranty in respect of the property.