



Ascensis Tower, Juniper Drive SW18

Asking price £3,990,000

Flat - Penthouse

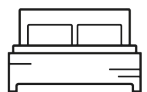
Size - 2867.00 sq ft

Tenure - Leasehold

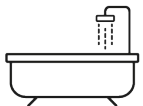
Status - Available

Council Tax Band - H

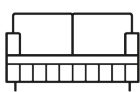
3



3



1



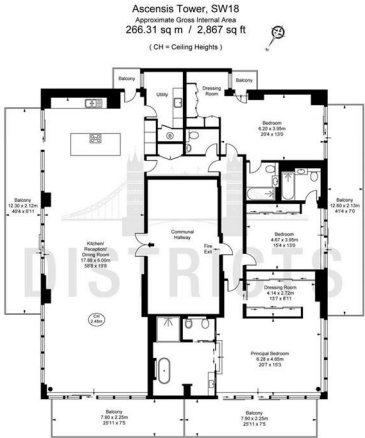
# Juniper Drive, London, SW18 1AY

## Asking price £3,990,000

A spectacular penthouse apartment occupying the entire 14th floor (2,886sq.ft), offering panoramic views over London. The apartment comprises 3 spacious double bedrooms, 3 bathrooms (all en-suite), guest WC, secure parking, 6 private balconies, including a large private terrace directly on the Riverside. Furthermore, this stunning penthouse includes an open plan reception room, a smart integrated kitchen with Siemens appliances including a coffee machine and wine cooler, wood flooring & fantastic storage. Great location with easy access to Chelsea, Kensington and Sloane Square. Residents benefit from a 24-hour concierge, private gym and a host of further on-site amenities including shops, restaurants and coffee shops.

Leasehold: 999 Years from 1 November 2004 (981 Years Remaining)  
Service Charge: Approx £18,000 per annum  
Ground Rent: Approx £650 per annum  
Wandsworth Council Tax: Band H

### Floorplan



### Key Information

- Sub-Penthouse
- 2867sq.ft (266sq.m) (Entire Floor)
- Three Double Bedrooms
- Panoramic Views Across London
- Open Plan Reception
- Secure Parking
- 6 Balconies
- Sunset Views
- 24 Hour Concierge
- Residents Gym

### EPC Certificate

