



2102 1 Park Drive, E14 9SB

Asking price £850,000



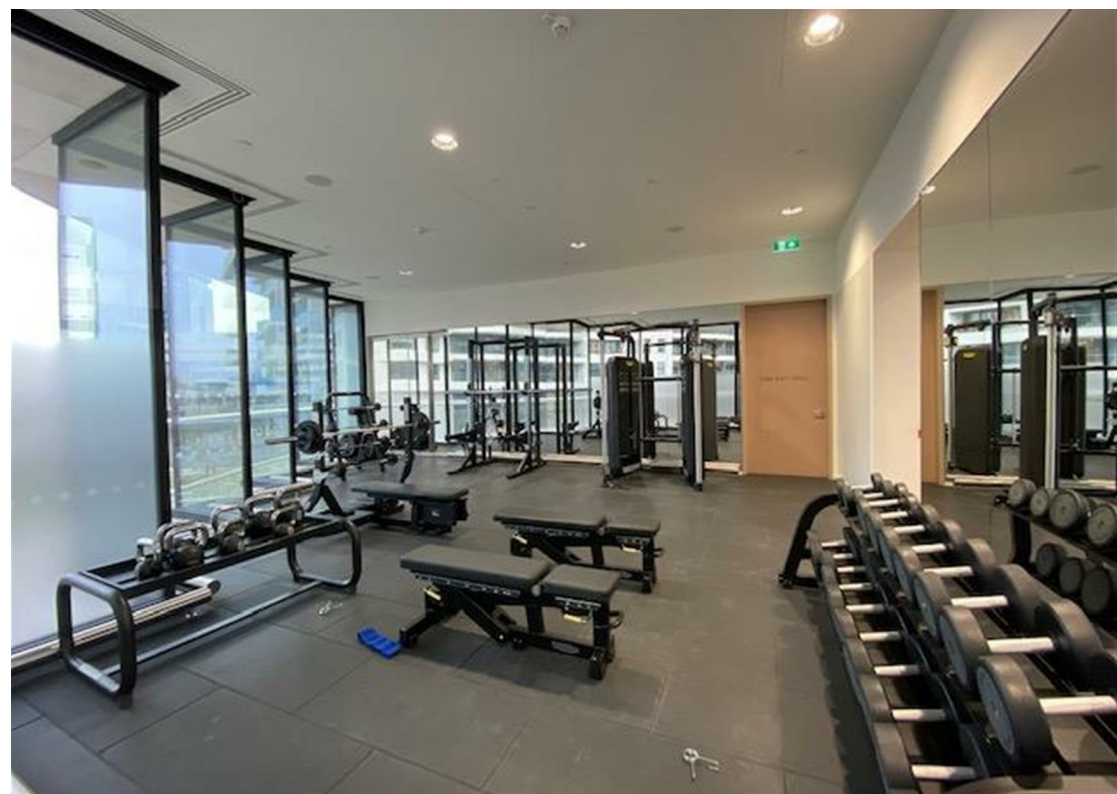
This luxurious one bedroom apartment situated in the prestigious One Park Drive. Featuring stunning views from both the reception and bedroom, the property offers a double balcony, an open plan kitchen / reception room, contemporary designed bathroom and built in storage in the bedroom. The property comes with access to secure underground parking.

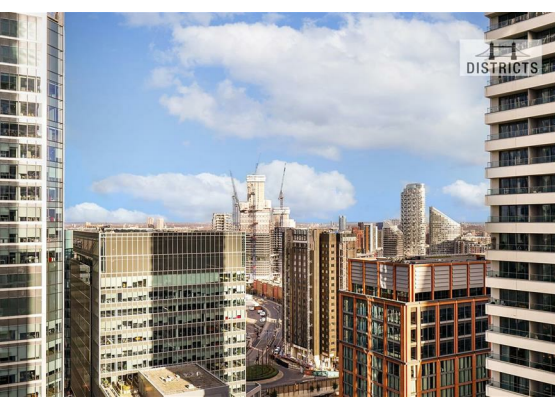
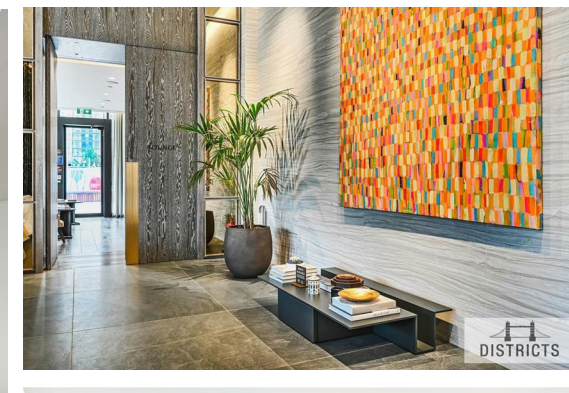
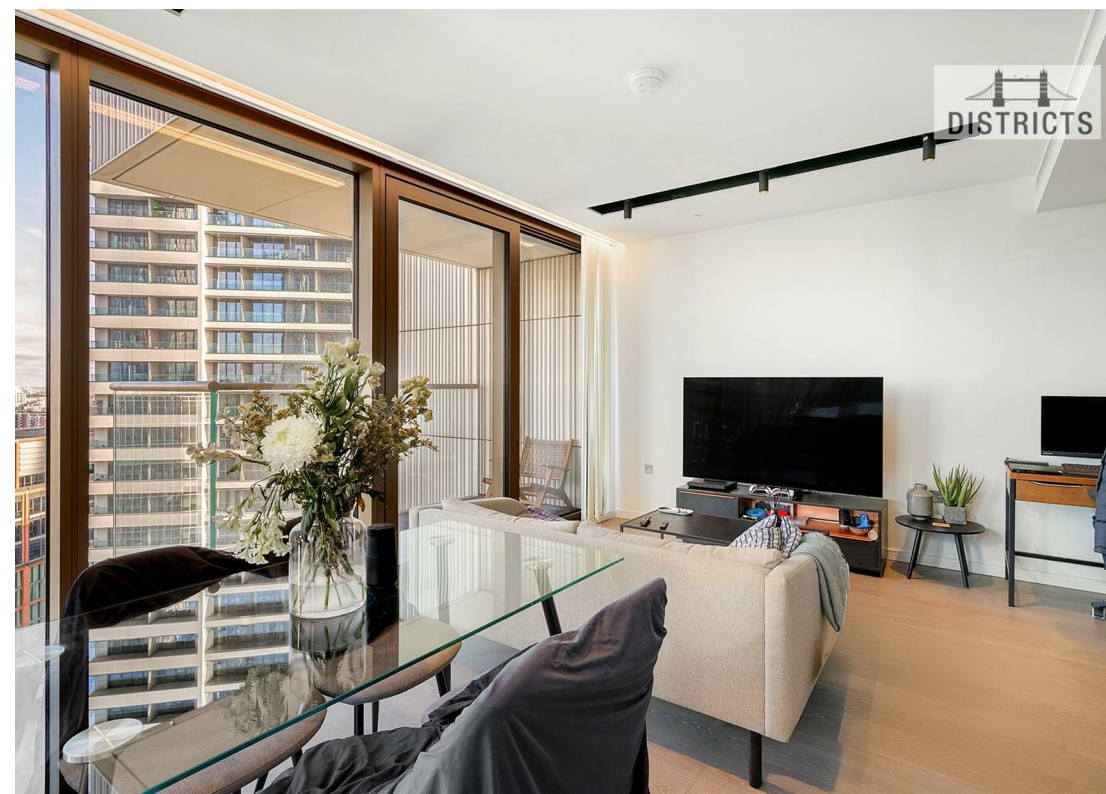
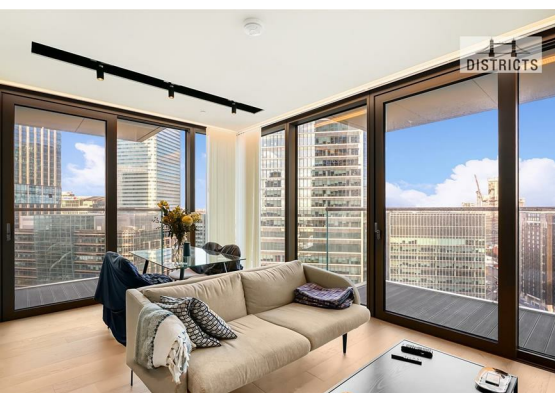
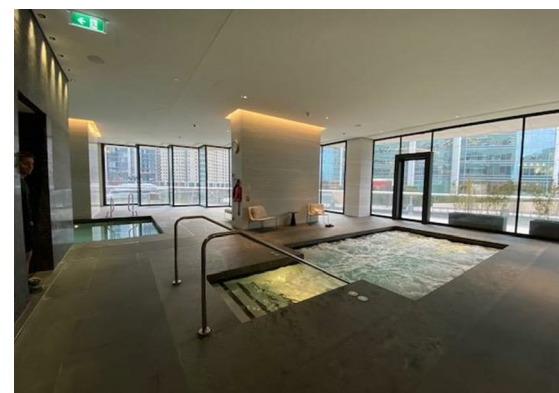
** Photos of the bedroom have been digitally dressed for marketing purposes.

A wonderful array of resident facilities includes a 24-hour concierge service, gym, swimming pool, cinema, lounge and library.

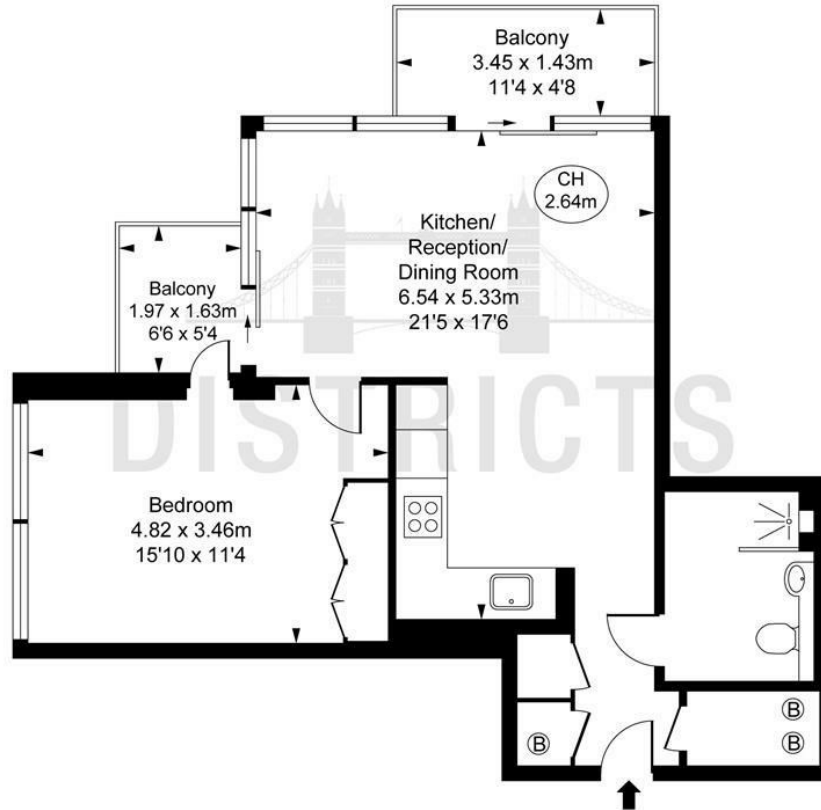
- Electricity supply – Mains | Water supply – Mains | Sewerage – Mains | Heating – Underfloor heating & Comfort cooling and heating
- To check broadband and mobile phone coverage please visit Ofcom.
- EPC Rating: B
- Council Tax Band: E, Tower Hamlets
- Lift access | Cladding: EWS1 Certificate available

Leasehold: 236 years remaining | Service Charge: Approx. £6,500pa | Ground Rent: £550pa Approx.





Park Drive, E14
Approximate Gross Internal Area
56.98 sq m / 613 sq ft
(CH = Ceiling Heights)



This plan is not to scale. It is for guidance and not for valuation purposes.
All measurements and areas are approximate only, and have been prepared in accordance with the current edition of the RICS Code of Measuring Practice.
© Fulham Performance

Energy Efficiency Rating		
	Current	Potential
Very energy efficient - lower running costs		
(92 plus) A		
(81-91) B	83	83
(69-80) C		
(55-68) D		
(39-54) E		
(21-38) F		
(1-20) G		
Not energy efficient - higher running costs		
England & Wales		EU Directive 2002/91/EC

These particulars, whilst believed to be accurate are set out as a general outline only for guidance and do not constitute any part of an offer or contract. Intending purchasers should not rely on them as statements of representation of fact, but must satisfy themselves by inspection or otherwise as to their accuracy. No person in this firms employment has the authority to make or give any representation or warranty in respect of the property.