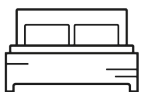




Circus Road West

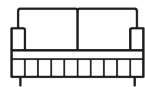
3



3



1



£2,500 Per week

Apartment - Unfurnished

Size - 2047.00 sq ft

Deposit - £15,000

Available - 26th July 2024

Council Tax Band - H

Circus Road West, London, SW11 8EG

£2,500 Per week

An incredible three bedroom, three bathroom apartment with spectacular river views located in Battersea Power Station. Offering over 2,000sq ft of luxurious accommodation, this beautiful apartment boasts a wealth of light and space.

In an aim to offer the epitome of city living this iconic development boasts a selection of vibrant shops, restaurants and leisure spaces all on the doorstep of its residents. Bessborough House is located in the West phase of the complex ideally situated for the River Thames, Chelsea, Battersea Park and local tube and rail stations.

Minimum contract: 12 months

Council tax band : Wandsworth Council - H

Change of contract fee: £50 including VAT

Lift access | Cladding: EWS1 Certificate available

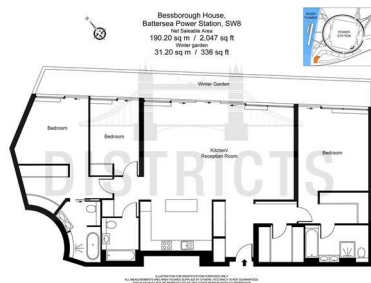
Holding Deposit - £2,500 (1 weeks rent, subject to agreed offer)

Electricity supply – Mains | Cold Water supply – Mains | Sewerage – Mains | Hot water, heating & comfort cooling – Mains | Internet: Fibre | Parking available by separate negotiation

To check broadband and mobile phone coverage please visit Ofcom.

To check planning permission please visit Wandsworth Council Website, Planning & Building Control

Floorplan



Key Information

- Comfort Cooling
- Winter Garden
- Dishwasher & Combination Washer/ Dryer
- 24 Hour Concierge
- Swimming Pool & Gym
- Cinema Suite
- Zone 1 Transport Links
- Close to Battersea Park
- Three Bedroom
- Three Bathroom



EPC CERTIFICATE

Energy Efficiency Rating		Current	Potential
Very energy efficient - lower running costs			
(92 plus) A			
(81-91) B			
(69-80) C			
(55-68) D			
(39-54) E			
(21-38) F			
(1-20) G			
Not energy efficient - higher running costs			
England & Wales		EU Directive 2002/91/EC	

Environmental Impact (CO ₂) Rating		Current	Potential
Very environmentally friendly - lower CO2 emissions			
(92 plus) A			
(81-91) B			
(69-80) C			
(55-68) D			
(39-54) E			
(21-38) F			
(1-20) G			
Not environmentally friendly - higher CO2 emissions			
England & Wales		EU Directive 2002/91/EC	