



5106 1 Park Drive, London, E14 9BB

£1,250 Per week

2 2 1 B

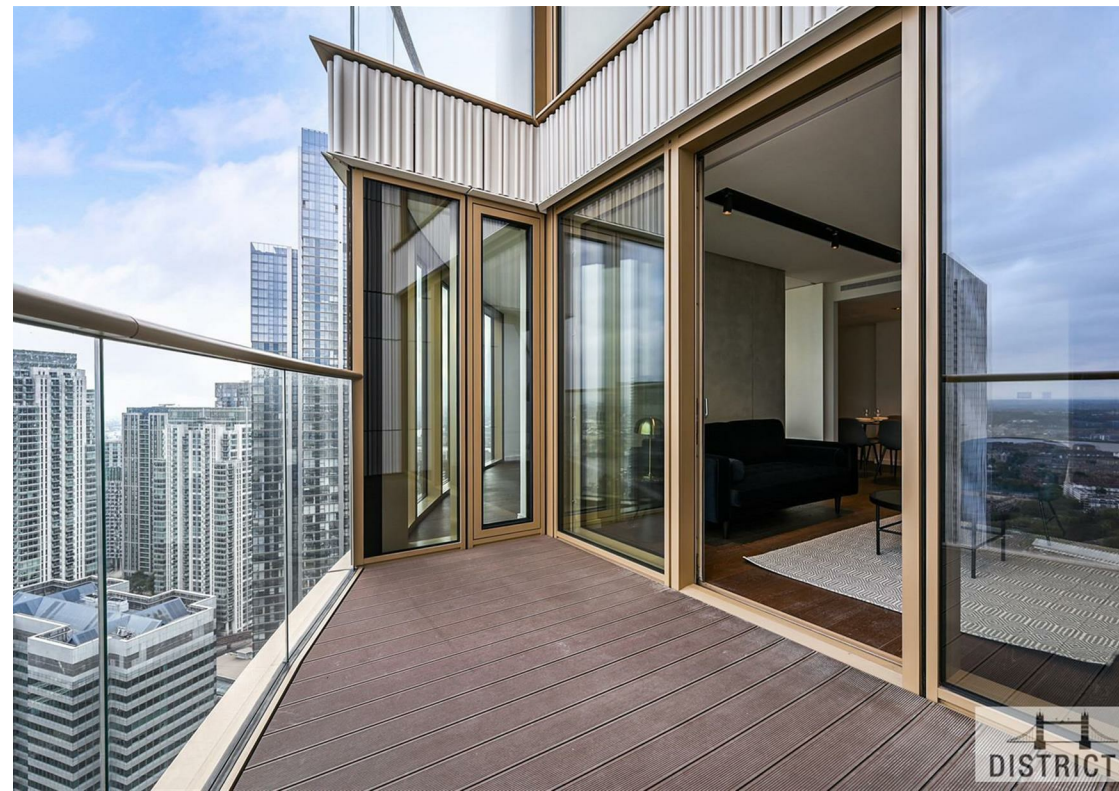


DISTRICTS

High Floor!! Great Views!! This luxurious two-bedroom apartment situated in the prestigious One Park Drive. Featuring stunning views from both the reception and bedrooms, the property offers a private balcony, an open plan kitchen / reception room, contemporary designed bathrooms and built in storage in the bedrooms. A wonderful array of resident facilities includes a 24-hour concierge service, gym, swimming pool, cinema, lounge and library. Photos used of a similar property.

Available 26/08/2024 / Furnished

- Electricity supply – Mains | Water supply – Mains | Sewerage – Mains | Heating – Underfloor heating & Comfort cooling and heating
- To check broadband and mobile phone coverage please visit Ofcom here <https://www.ofcom.org.uk/phones-telecoms-and-internet/advice-for-consumers/advice/ofcom-checker>
- Holding Deposit £1,250 (1 weeks rent) | Deposit Payable £7,500 (6 weeks rent) | Minimum Term: 12 months | Rent must be paid monthly in advance
- EPC Rating: B
- Council Tax Band: F, Tower Hamlets
- Change of contract fee: £50 including VAT
- Lift access | Cladding: EWS1 Certificate available





DISTRICT



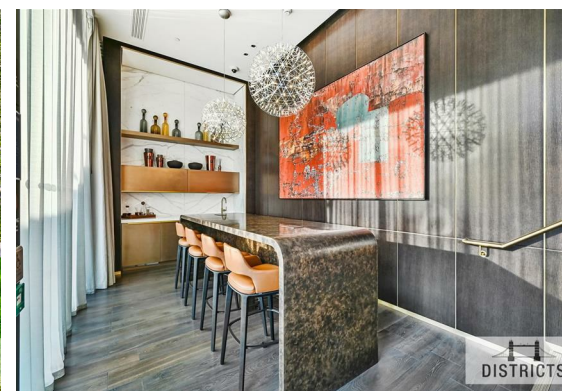
DISTRICTS



DISTRICTS



DISTRICTS



DISTRICTS



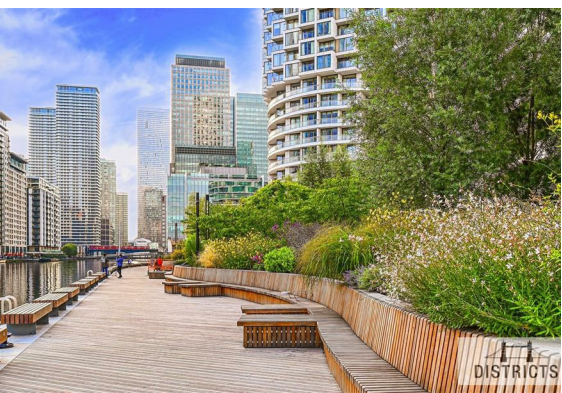
DISTRICTS



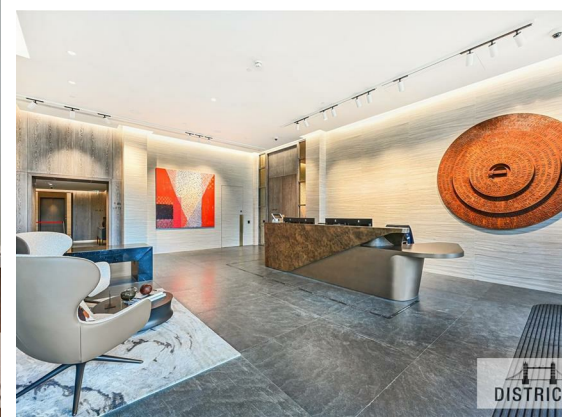
DISTRICT



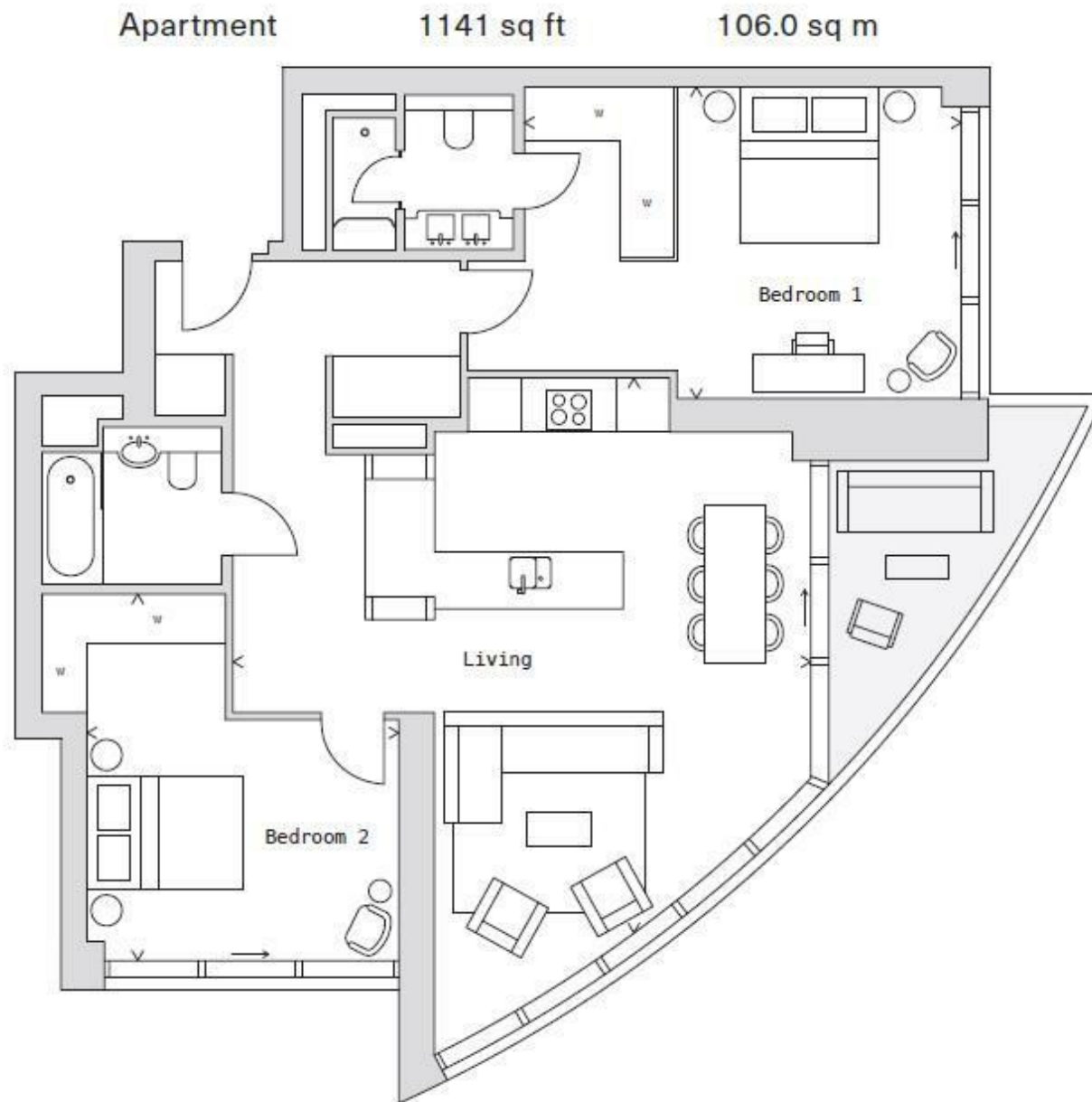
DISTRICTS




DISTRICTS



DISTRICT



Energy Efficiency Rating		Current	Potential
<i>Very energy efficient - lower running costs</i>			
(92 plus) A			
(81-91) B		85	85
(69-80) C			
(55-68) D			
(39-54) E			
(21-38) F			
(1-20) G			
<i>Not energy efficient - higher running costs</i>			
England & Wales		EU Directive 2002/91/EC 	

These particulars, whilst believed to be accurate are set out as a general outline only for guidance and do not constitute any part of an offer or contract. Intending purchasers should not rely on them as statements of representation of fact, but must satisfy themselves by inspection or otherwise as to their accuracy. No person in this firm's employment has the authority to make or give any representation or warranty in respect of the property.