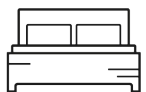




Circus Road West

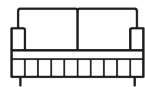
1



1



0



£650 Per week

Apartment - Furnished

Size - 0.00 sq ft

Deposit - £3,250

Available - 10th April 2024

Council Tax Band - E

Circus Road West, London, SW11 8BD

£650 Per week

A luxurious studio apartment set within the iconic Battersea Power Station itself. Featuring timeless, unique design this beautiful property offers a larger than average living space, complete with fully integrated appliances including a dishwasher.

Residents benefit from impressive communal facilities which include, meeting rooms and a 24 hour concierge. The complex is ideally situated for the River Thames, Chelsea, Battersea Park and local tube and rail stations.

Available 10/04/2024
Minimum contract: 12 months
Change of contract fee: £50 including VAT
Council Tax: Wandsworth - E
Deposit Amount: £3250

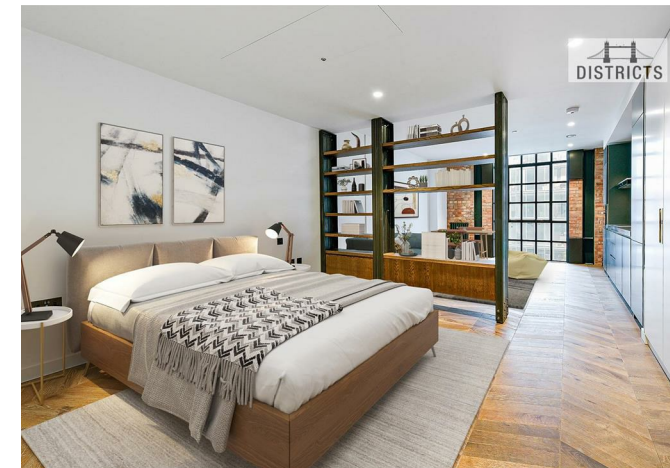
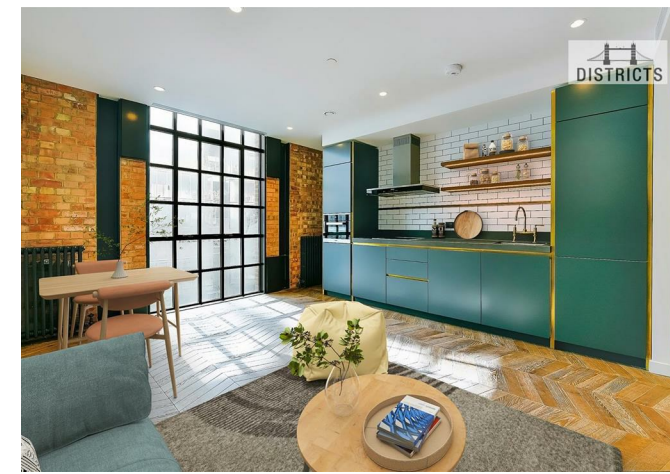
Electricity supply – Mains | Cold Water supply – Mains | Sewerage – Mains | Hot water, heating & comfort cooling – Communal | Internet: Fibre

To check broadband and mobile phone coverage please visit Ofcom here <https://www.ofcom.org.uk/phones-telecoms-and-internet/advice-for-consumers/advice/ofcom-checker>

Floorplan

Key Information

- Furnished
- Walking Distance to Northern Line Tube
- Access to on site facilities
- 24 Hour concierge
- Comfort cooling
- Furniture in Photos are CGI



EPC CERTIFICATE

Energy Efficiency Rating		Current	Potential
Very energy efficient - lower running costs			
(92 plus) A			
(81-91) B			
(69-80) C			
(55-68) D			
(39-54) E			
(21-38) F			
(1-20) G			
Not energy efficient - higher running costs			
England & Wales		EU Directive 2002/91/EC	

Environmental Impact (CO ₂) Rating		Current	Potential
Very environmentally friendly - lower CO ₂ emissions			
(92 plus) A			
(81-91) B			
(69-80) C			
(55-68) D			
(39-54) E			
(21-38) F			
(1-20) G			
Not environmentally friendly - higher CO ₂ emissions			
England & Wales		EU Directive 2002/91/EC	

Unit 2, Hampton Tower 75 Marsh Wall, Canary Wharf, London, E14 9WS
T. +44(0)207 139 5062 | E. contact@districtslondon.com