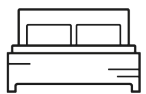


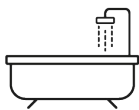


Queensway

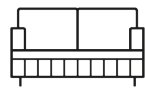
3



2



1



£1,100,000

Flat - null

Size - 1599.00 sq ft

Deposit -

null -

Council Tax Band - G

Queensway, London, W2 4QN

£1,100,000

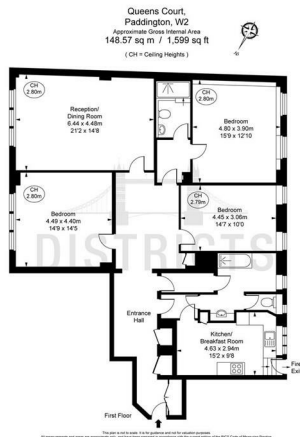
A spacious, bright three-bedroom lateral apartment, located on the first floor of this portered residential block, close to Hyde Park and Queensway Underground Station.

Queensway boasts a large range of boutiques, restaurants and bars, as well as close proximity to the green spaces of Hyde Park, Notting Hill and superb transport links of Paddington and Notting Hill Gate. The property further benefits from lift access and a portered service.

There are several transport options available, including Queensway (1 minute walk, Central) and Bayswater (2 minutes' walk, Circle & District) linking up to the rest of London and beyond.

1. Heating – Radiators – Communal
2. Electricity – Mains
3. Ground rent amounts: £0
4. Service charge paid 6 monthly? £8,466 which includes heating and hot water
5. Mechanism for Ground rent increase: TBC
6. Ews1 Certificate: Brick Building
7. Leasehold - Term :135 Years remaining
8. EPC – D
9. Council Tax Band: G - Westminster

Floorplan



Key Information

- 1599 Sq.ft
- Three Double Bedrooms
- Two Bathrooms (One En-Suite)
- Reception Room
- Kitchen
- Close to Queensway Underground Station
- Porter
- Moments from King's Road, Chelsea Harbour and Imperial Wharf Station



EPC CERTIFICATE

