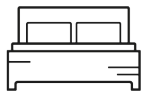


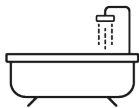


## 1 Pan Peninsula Square

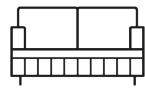
2



2



1



£600,000

Apartment - null

Size - 802.00 sq ft

Deposit -

null -

Council Tax Band - G



**DISTRICTS**  
LONDON

# 1 Pan Peninsula Square, London, E14 9HG

£600,000

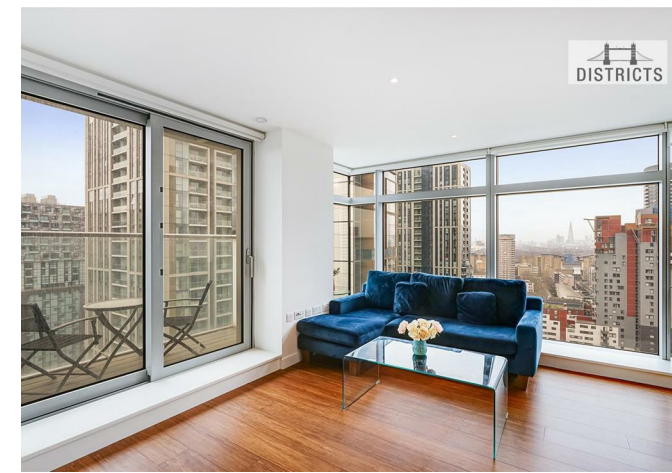
Bright and spacious two double bedroom apartment on a high floor and located in the prestigious Pan Peninsula development. Comprising two double bedrooms, two luxury bathrooms (both en-suite), open plan reception with a modern kitchen. Located few moments from the heart of London's fastest growing business district, Pan Peninsula is incredibly well connected with direct access to South Quay DLR station, 5 minutes to Canary Wharf Underground Station and Crossrail (The Elizabeth Line).

Residents enjoy a luxury city lifestyle as they immerse themselves in what this central London location has to offer, providing fantastic facilities including a state-of-the-art gym, a swimming pool, screening room, 24 hr Concierge Service and valet parking.

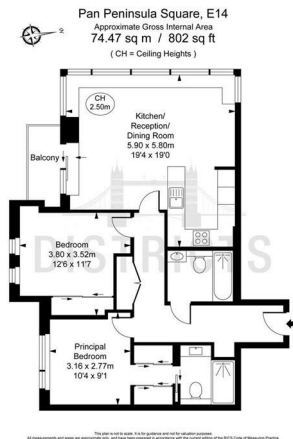
Leasehold: Approx. 983 years  
 Service Charge: £12,300pa  
 Ground Rent: Approx. £450pa  
 Council Tax - Tower Hamlets, Band G

## Key Information

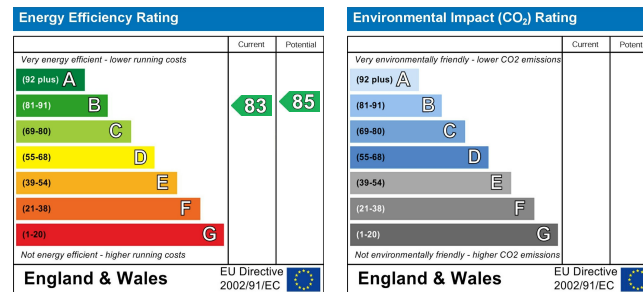
- 2 Bedroom, 2 Luxury Bathrooms (both en-suite)
- Secure Valet Parking
- South Facing Views
- Open Plan Reception with Smart Integrated Kitchen
- South West Facing | Dual Aspect
- Exclusive Residents Gym, Swimming Pool, Screening Room
- 24 hr Concierge
- Moments From SQP DLR, Canary Wharf Underground Station and the New Queen Elizabeth Crossrail Line



## Floorplan



## EPC CERTIFICATE



Unit 2, Hampton Tower 75 Marsh Wall, Canary Wharf, London, E14 9WS  
 T. +44(0)207 139 5062 | E. contact@districtslondon.com