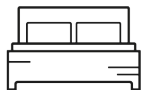




## Hampton Tower

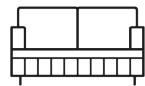
1



1



1



Asking price £700,000

Apartment - null

Size - sq ft

Deposit -

null -

Council Tax Band - E

# Hampton Tower, Canary Wharf, E14 9RJ

Asking price £700,000

Premium one bedroom with luxury bathroom and open plan reception situated in South Quay Plaza, a landmark development designed by world leading architects Foster + Partners. Residents enjoy a 5-star lifestyle as they become exclusive members of The Quay Club, providing fantastic facilities including a state of the art gym, 20m swimming pool overlooking the South Dock, business lounge, screening room and private dining room as well as the stunning 56th floor bar and terrace, offering panoramic views of the London skyline. Located just a few moments from the heart of London's fastest growing business district, SQP is incredibly well connected with direct access to South Quay DLR station and less than 5 minutes to Canary Wharf and the Elizabeth Line (Crossrail) underground station.

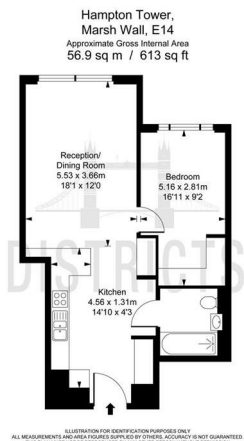
Leasehold: 999 Years from new  
 Service Charge: Approx £10/sq.ft  
 Ground Rent: Approx £450pa  
 Council Tax - Tower Hamlets, Band E

## Key Information

- Premium Double Bedroom, Luxury Bathroom
- 613 sq. ft. / 56.9 sq.m
- South Quay DLR Station (1 min away) and Moments from Canary Wharf Underground
- Exclusive access to The Quay Club offers incredible resident facilities
- The Bamboo Sanctuary comprising a luxury spa, pool, gym and health suite
- The iGarden / flexible work and study space
- 56th floor Club Lounge, boasting panoramic views across London
- 19th floor with South Facing Aspect



## Floorplan

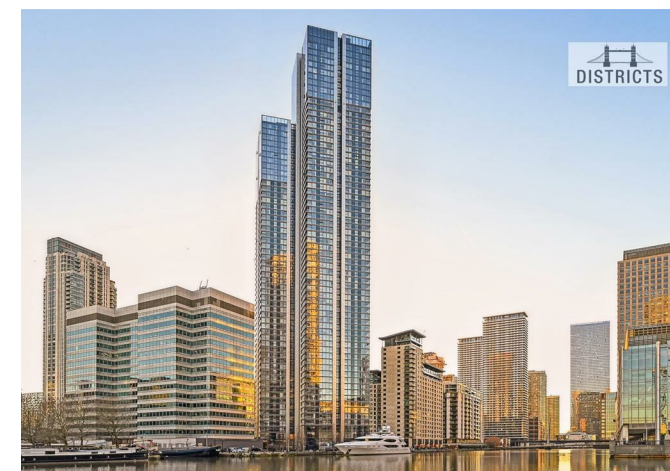


## EPC CERTIFICATE

Energy Efficiency Rating		Current	Potential
Very energy efficient - lower running costs			
(92 plus) A			
(81-91) B			
(69-80) C			
(55-68) D			
(39-54) E			
(21-38) F			
(1-20) G			
Not energy efficient - higher running costs			
England & Wales		EU Directive 2002/91/EC	

Environmental Impact (CO <sub>2</sub> ) Rating		Current	Potential
Very environmentally friendly - lower CO <sub>2</sub> emissions			
(92 plus) A			
(81-91) B			
(69-80) C			
(55-68) D			
(39-54) E			
(21-38) F			
(1-20) G			
Not environmentally friendly - higher CO <sub>2</sub> emissions			
England & Wales		EU Directive 2002/91/EC	



Unit 2, Hampton Tower 75 Marsh Wall, Canary Wharf, London, E14 9WS  
 T. +44(0)207 139 5062 | E. contact@districtslondon.com

