

COUNTRYSIDETATTENHOE.COM

COUNTRYSIDE AT



TATTENHOE PARK

MILTON KEYNES



THE PIPER 4 bedroom, 2 storey house

Plots 1, 87, 91, 93, 96, 134, 137, 146, 160, 233, 236, 245,
254, 258, 261, 272, 281, 293, 302, 306, 308, 315 & 318

A four bedroom family home, The Piper is full of character both inside and out. The superb open plan accommodation provides you with the utmost in flexibility; you're also sure to be charmed by the feature bay windows in the living room and master bedroom upstairs.



COUNTRYSIDE
Places People Love



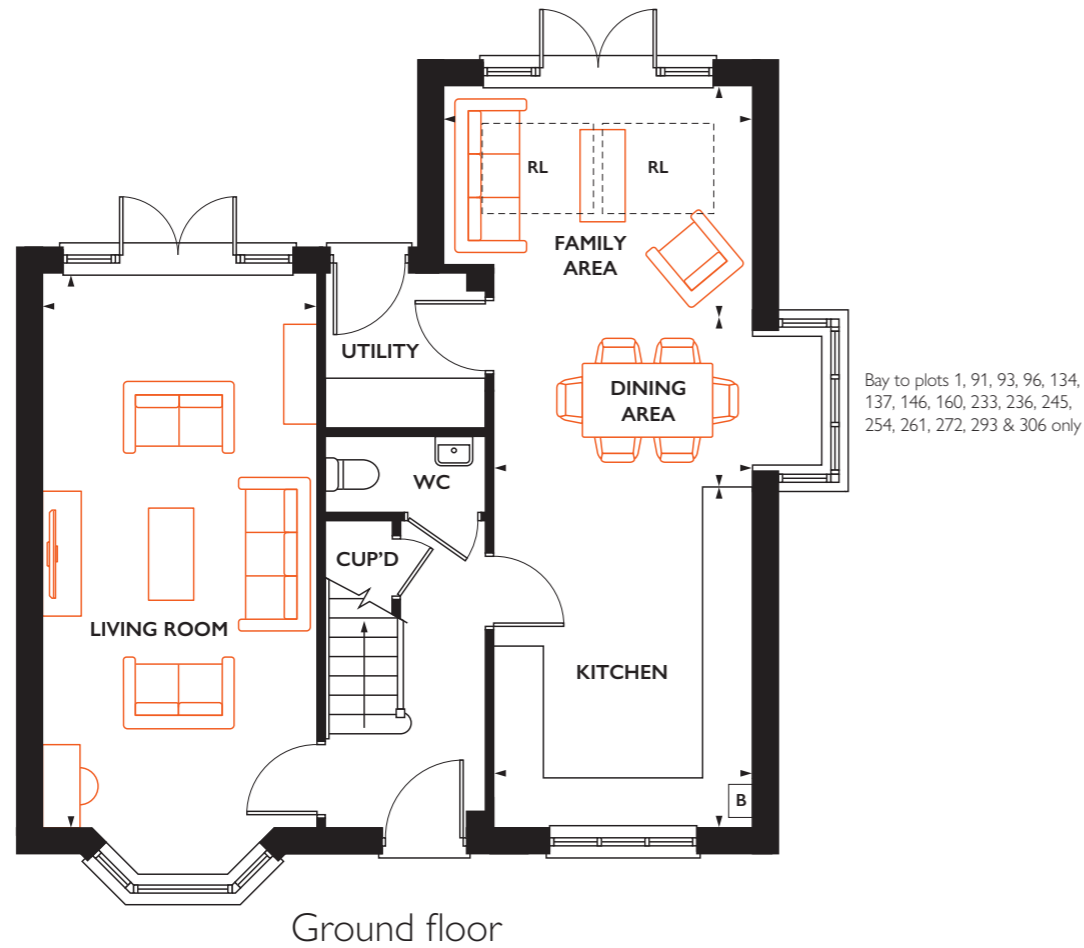
COUNTRYSIDE
Places People Love



THE PIPER

Total internal area 124 sq.m 1334 sq.ft

Plots 1, 87*, 91*, 93*, 96*, 134, 137*, 146*, 160, 233*, 236, 245*, 254, 258, 261*, 272, 281, 293*, 302, 306, 308, 315 & 318

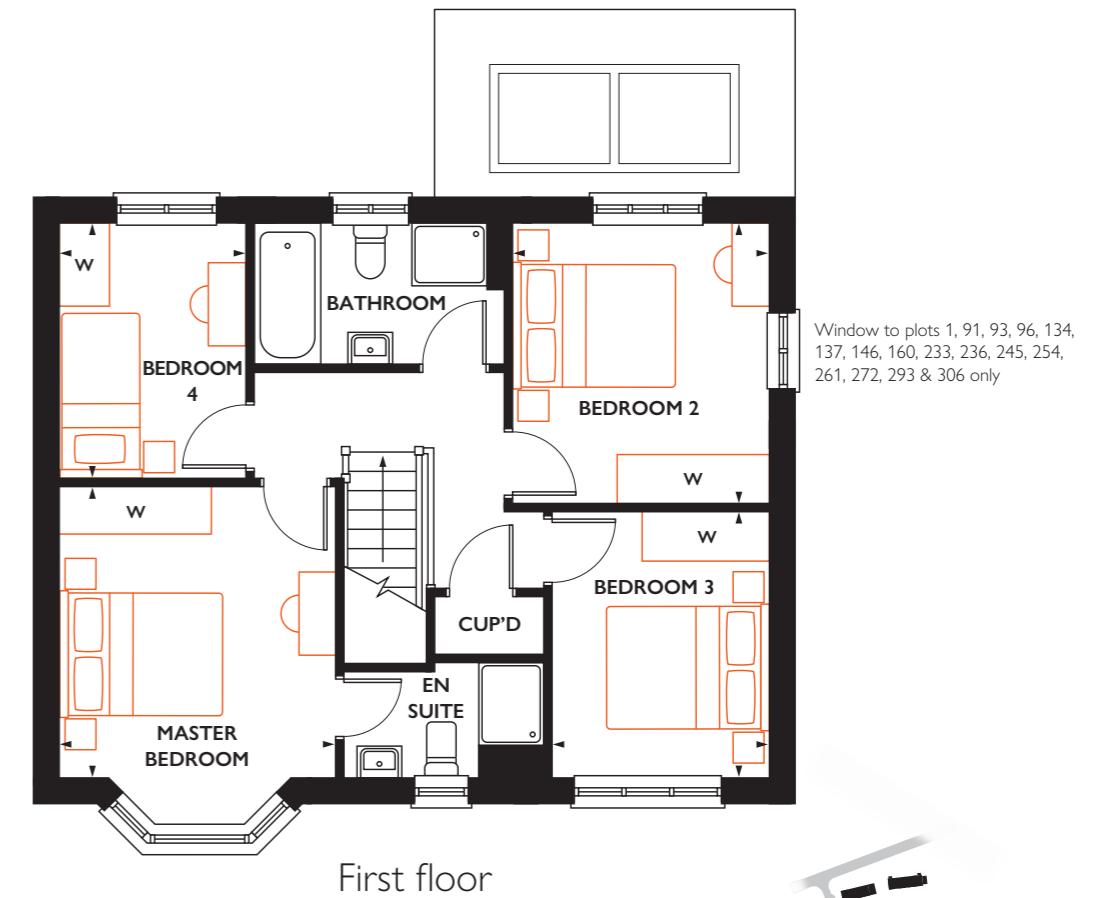


Ground floor

KITCHEN	4.10m x 3.10m	13' 5" x 10' 2"
DINING AREA	3.10m x 2.05m	10' 2" x 6' 8"
FAMILY AREA	3.70m x 2.79m	12' 2" x 9' 2"
LIVING ROOM	6.66m x 3.29m	21' 11" x 10' 10"

First floor

MASTER BEDROOM	3.50m x 3.31m	11' 6" x 10' 10"
BEDROOM 2	3.38m x 3.08m	11' 1" x 10' 1"
BEDROOM 3	3.20m x 2.60m	10' 6" x 10' 1"
BEDROOM 4	3.08m x 2.23m	10' 1" x 7' 4"



* Handed plot B = Boiler (location is indicative) RL = Roof light W = Space for a wardrobe

All room sizes are approximate with maximum dimensions which have been taken into the kitchen units and are not intended for carpet sizes or items of furniture. All dimensions and areas listed are to finished measurements. Countryside operates a policy of continuous product development and all room layouts may be subject to minor modifications. Kitchen, bathroom and furniture layouts shown are indicative only. Computer generated images are indicative only and can be subject to change. Images are often shown from an imaginary open space area and variations to the external design and landscaping may occur. Please ask Sales Consultants for detailed information regarding specific properties. March 2022.

