

COUNTRYSIDE AT



TATTENHOE PARK

MILTON KEYNES



Computer generated image of The Lewin, plot 278

THE LEWIN 3 bedroom, 2 storey house

Plots 132, 140, 141, 151, 152, 264, 275 & 278

The pièce de résistance of this glorious three bedroom home is the living space at the rear, which encompasses the kitchen/dining area and the family area. Its three sky lights and double doors to the garden make it wonderfully light and airy, and the welcoming focal point of the home.



COUNTRYSIDE

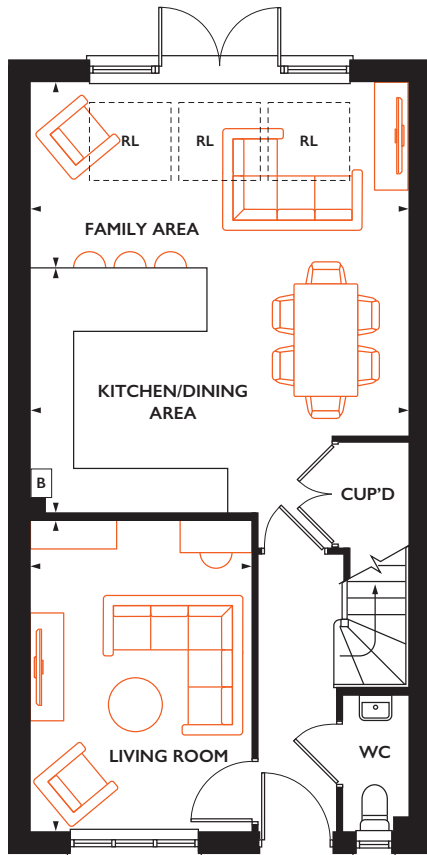
Places People Love



THE LEWIN

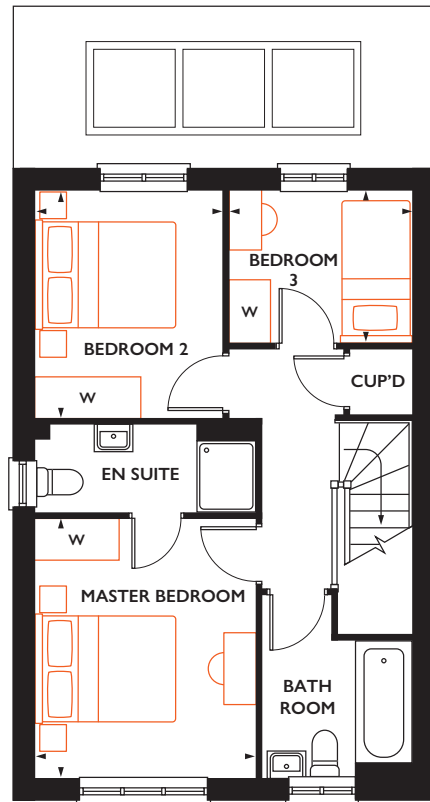
Total internal area 99 sq.m 1075 sq.ft

Plots 132*, 140*, 141, 151*, 152, 264*, 275* & 278



Ground floor

Bay replaces window to plots 132, 151 & 152



First floor

Ground floor

KITCHEN/DINING AREA

5.24m x 3.40m 17' 3" x 11' 2"

FAMILY AREA

5.24m x 2.58m 17' 3" x 8' 5"

LIVING ROOM

4.32m x 3.06m 14' 2" x 10' 0"

First floor

MASTER BEDROOM

3.60m x 3.06m 11' 10" x 10' 1"

BEDROOM 2

3.16m x 2.61m 10' 4" x 8' 7"

BEDROOM 3

2.54m x 2.11m 8' 4" x 6' 11"

* Handed plot B = Boiler (location is indicative) RL = Roof light W = Space for a wardrobe

All room sizes are approximate with maximum dimensions which have been taken into the kitchen units and are not intended for carpet sizes or items of furniture. All dimensions and areas listed are to finished measurements. Countryside operates a policy of continuous product development and all room layouts may be subject to minor modifications. Kitchen, bathroom and furniture layouts shown are indicative only. Computer generated images are indicative only and can be subject to change. Images are often shown from an imaginary open space area and variations to the external design and landscaping may occur. Please ask Sales Consultants for detailed information regarding specific properties. March 2022.



countryside.tattenhoe.com