

COUNTRYSIDETATTENHOE.COM

COUNTRYSIDE AT



TATTENHOE PARK

MILTON KEYNES



Computer generated image of The Dove, plots 288 & 289

THE DOVE 4 bedroom, 3 storey house

Plots 3, 4, 81, 82, 94, 95, 119, 120, 135, 136, 147, 148, 149, 150, 156, 157, 166, 167, 220, 221, 243, 244, 259, 260, 288, 289, 299 & 300

The Dove is a superlative four bedroom home set across three expansive floors. The bay window offers a charming aspect to the living room on the ground floor. The master bedroom on the second floor is a suite of its own with its attractive sky lights, vaulted ceilings and private bathroom.



COUNTRYSIDE
Places People Love



COUNTRYSIDE
Places People Love



THE DOVE

Total internal area **111 sq.m 1198 sq.ft**

Plots 3*, 4*, 81, 82*, 94, 95*, 119*, 120, 135*, 136*, 147*, 148*, 149, 150, 156, 157, 166*, 167*, 220, 221*, 243*, 244, 259*, 260, 288*, 289*, 299* & 300

Ground floor

KITCHEN/DINING ROOM
5.39m x 4.02m 17' 8" x 13' 2"

LIVING ROOM
4.52m x 3.09m 14' 11" x 10' 2"

First floor

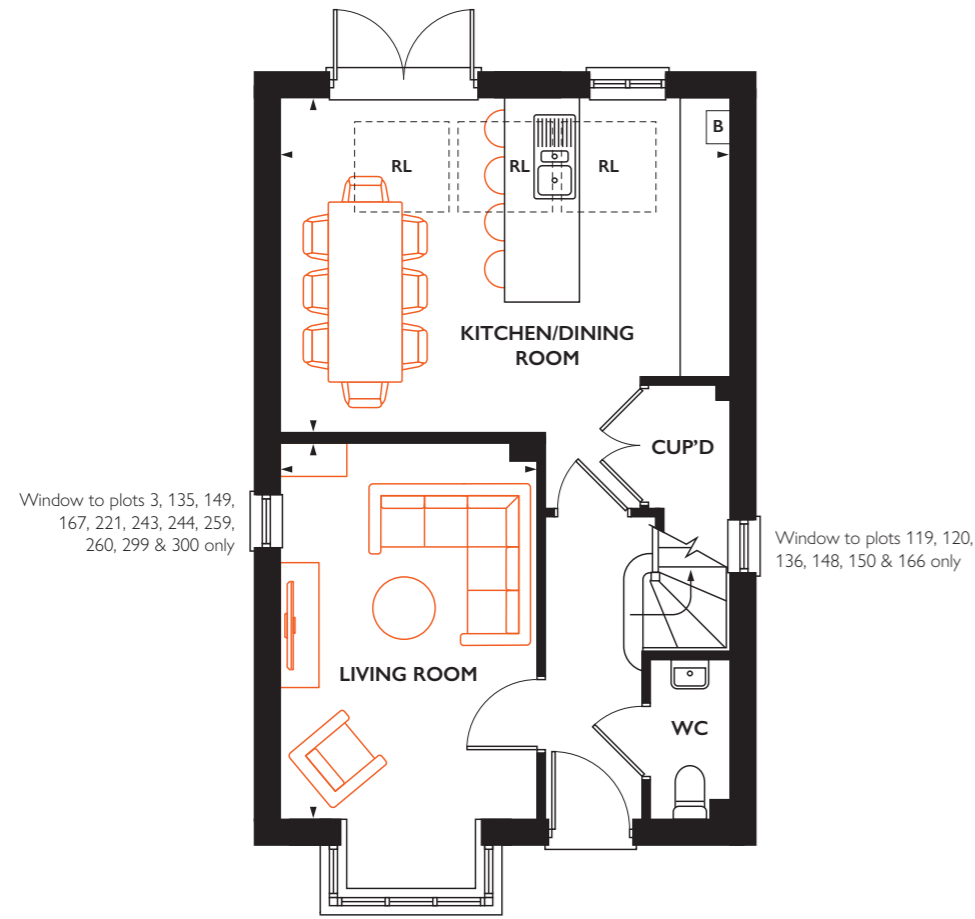
BEDROOM 2
3.17m x 2.74m 10' 5" x 9' 1"

BEDROOM 3
3.28m x 2.74m 10' 9" x 9' 1"

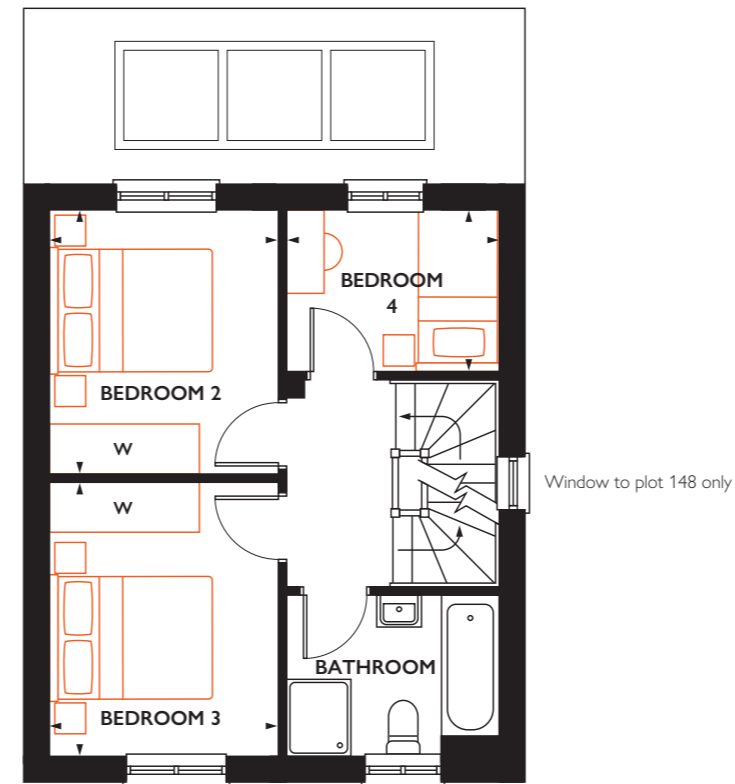
BEDROOM 4
2.55m x 1.94m 8' 5" x 6' 5"

Second floor

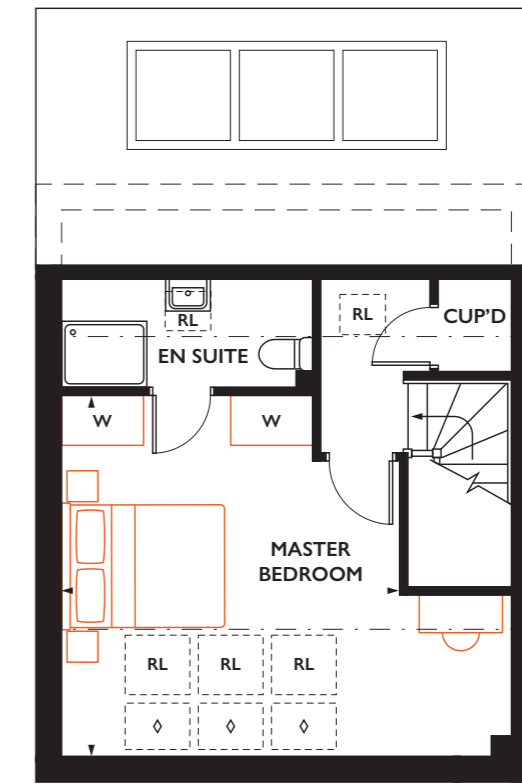
MASTER BEDROOM
4.33m x 4.05m 14' 2" x 13' 3"



Ground floor



First floor



Second floor



* Handed plot B = Boiler (location is indicative) RL = Roof light W = Space for a wardrobe - - - = Full height headroom with sloping ceiling to wall ◊ = Fixed glazed panel

All room sizes are approximate with maximum dimensions which have been taken into the kitchen units and are not intended for carpet sizes or items of furniture. All dimensions and areas listed are to finished measurements. Countryside operates a policy of continuous product development and all room layouts may be subject to minor modifications. Kitchen, bathroom and furniture layouts shown are indicative only and can be subject to change. Images are often shown from an imaginary open space area and variations to the external design and landscaping may occur. Please ask Sales Consultants for detailed information regarding specific properties. April 2022.