

COUNTRYSIDETATTENHOE.COM

COUNTRYSIDE AT



TATTENHOE PARK

MILTON KEYNES



Computer generated image of The Turnstone, plot 303

THE TURNSTONE 4 bedroom, 2 storey house

Plots 6, 85, 88, 92, 124, 155, 159, 169, 172, 174, 224, 225, 226, 227,
228, 231, 256, 257, 273, 282, 291, 295, 303, 305, 311 & 317

A beautiful four bedroom detached home in which all the family will find space to call their own. The chef of the house will enjoy cooking up a storm in the kitchen, while the living room is ideal for cosy nights in. Bedroom four could become a home office or a playroom for the children.


COUNTRYSIDE
Places People Love

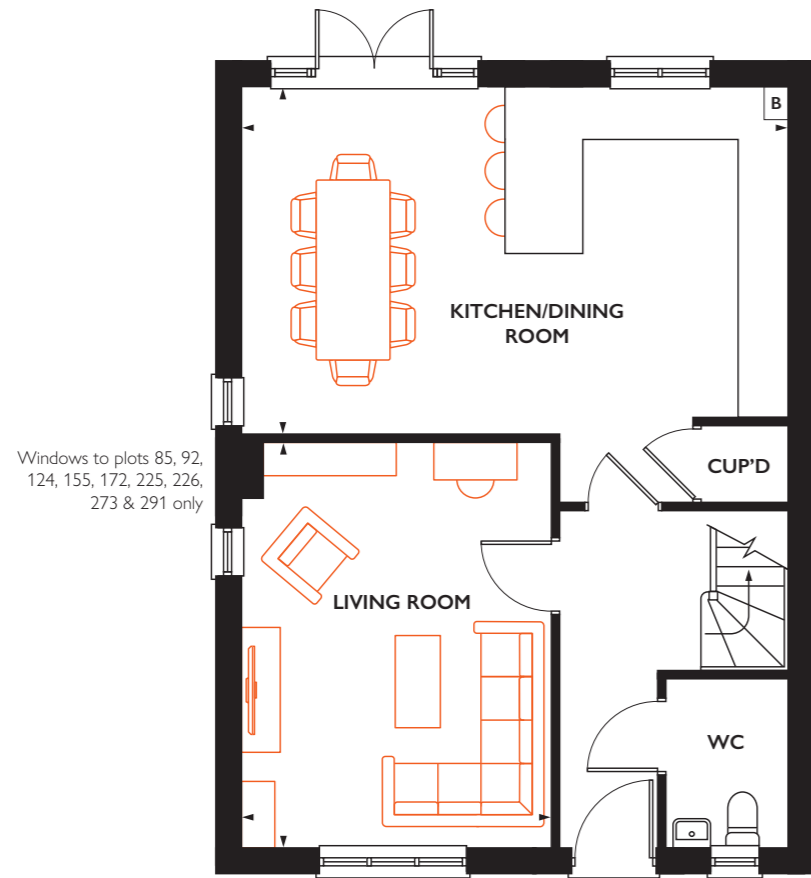

COUNTRYSIDE
Places People Love



THE TURNSTONE

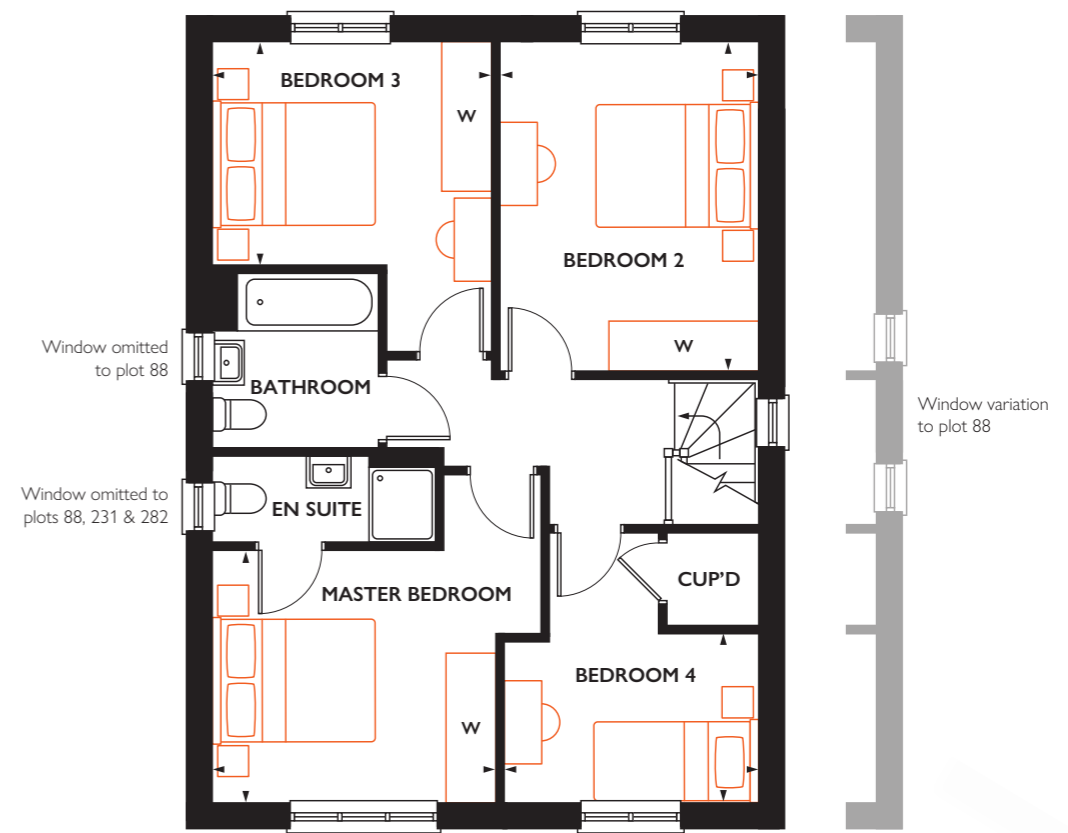
Total internal area 120 sq.m 1300 sq.ft

Plots 6, 85*, 88*, 92, 124*, 155*, 159*, 169, 172, 174, 224*, 225*, 226, 227*, 228, 231, 256*, 257*, 273, 282*, 291*, 295*, 303*, 305*, 311 & 317



Ground floor

Ground floor		First floor	
KITCHEN/DINING ROOM	6.55m x 4.16m 21' 5" x 13' 8"	MASTER BEDROOM	3.95m x 3.04m 13' 0" x 10' 0"
LIVING ROOM	4.86m x 3.70m 16' 0" x 12' 1"	BEDROOM 2	3.95m x 3.10m 13' 0" x 10' 2"
		BEDROOM 3	3.35m x 2.68m 11' 0" x 8' 10"
		BEDROOM 4	3.04m x 2.03m 10' 0" x 6' 8"



First floor



* Handed plot B = Boiler (location is indicative) W = Space for a wardrobe

All room sizes are approximate with maximum dimensions which have been taken into the kitchen units and are not intended for carpet sizes or items of furniture. All dimensions and areas listed are to finished measurements. Countryside operates a policy of continuous product development and all room layouts may be subject to minor modifications. Kitchen, bathroom and furniture layouts shown are indicative only. Computer generated images are indicative only and can be subject to change. Images are often shown from an imaginary open space area and variations to the external design and landscaping may occur. Please ask Sales Consultants for detailed information regarding specific properties. March 2022.