



## 56-58 Liverpool Road

, Crosby, L23 5SG

£1,800 Per month

### COMMERCIAL

This impressive commercial property on Liverpool Road offers a unique opportunity for businesses seeking a prime location. Spanning an expansive 2,350 square feet, the former bank premises are thoughtfully arranged at ground floor level, providing ample space for a variety of commercial uses.

The property boasts four well-proportioned reception rooms, ideal for welcoming clients or customers, alongside two cloakrooms for convenience. Its strategic position fronting the pedestrianized area ensures high foot traffic, making it an attractive spot for retail or service-oriented businesses.

The surrounding area is vibrant, with well-known occupiers such as Sainsbury's, and Costa Coffee, creating a lively atmosphere that draws in visitors and locals alike.

This property presents a fantastic opportunity for those looking to establish or expand their business in a thriving community. With its prime location and generous space, it is well-suited for a range of commercial ventures. Do not miss the chance to make this exceptional property your own.

- 219 sqm / 2035 Sq Ft
- Office with Shop Front
- Ground floor
- Situated in Crosby Village
- Available Immediately

### Viewing

Please contact our Michael Moon Office on 0151 924 1000 if you wish to arrange a viewing appointment for this property or require further information.





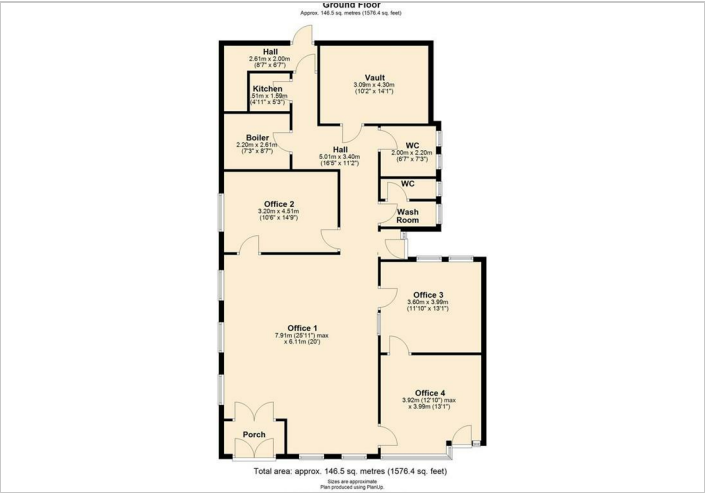
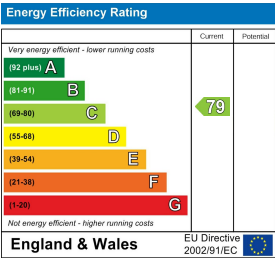
Floor Plan



Area Map



Energy Efficiency Graph



These particulars, whilst believed to be accurate are set out as a general outline only for guidance and do not constitute any part of an offer or contract. Intending purchasers should not rely on them as statements of representation of fact, but must satisfy themselves by inspection or otherwise as to their accuracy. No person in this firms employment has the authority to make or give any representation or warranty in respect of the property.