



89 Norfolk House 42 Simpson Street

, Liverpool, L1 0AZ

£800

We are delighted to offer this stylishly FURNISHED 7th floor studio with great views from the south facing balcony. Communal entrance, stairs and lift to upper floors, entrance hallway, kitchen with high gloss white units, open plan to living/dining area with south facing balcony off, modern shower room with white suite and bed area.

Available From 4TH April

Council Tax Band A

EPC Rating B

Minimum 12 months term

Rent £800 per calendar Month includes Water & Electricity

Deposit £923

- Studio Apartment
- Furnished
- Double Glazing
- Balcony
- EPC Rating B
- Available end of March
- Viewing required
- Rent includes Water & Electricity

Viewing

Please contact our Michael Moon Office on 0151 924 1000 if you wish to arrange a viewing appointment for this property or require further information.



0



1



1



B

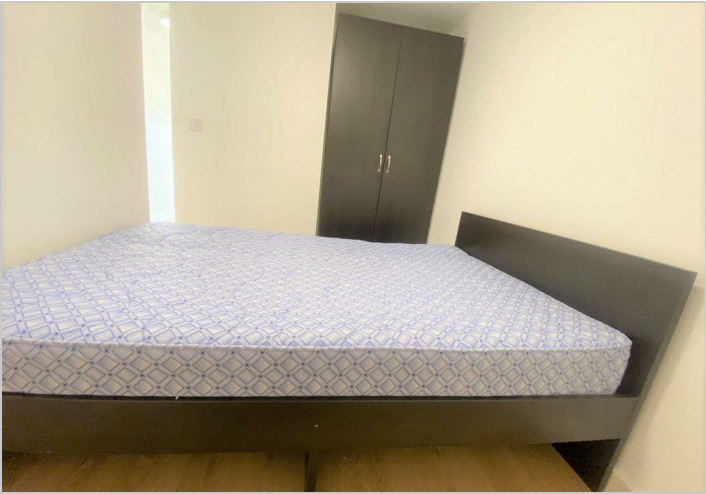
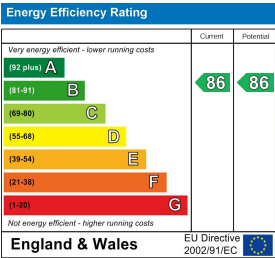
Floor Plan



Area Map



Energy Efficiency Graph



These particulars, whilst believed to be accurate are set out as a general outline only for guidance and do not constitute any part of an offer or contract. Intending purchasers should not rely on them as statements of representation of fact, but must satisfy themselves by inspection or otherwise as to their accuracy. No person in this firms employment has the authority to make or give any representation or warranty in respect of the property.