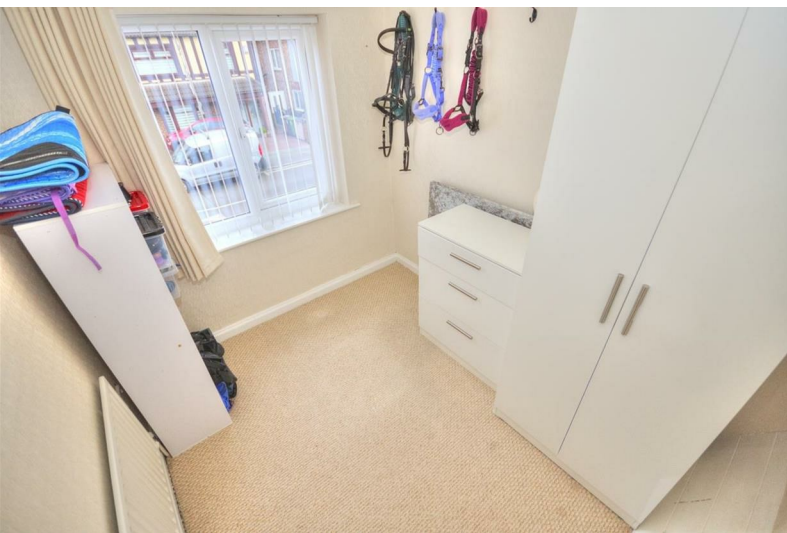




## 55 Rosedale Avenue

, Liverpool, L23 0UG

£285,000



# 55 Rosedale Avenue

, Liverpool, L23 0UG

£285,000



## Ground Floor

Porch

Entrance Hall

Lounge

Dining Room

Kitchen

Rear Reception Room

First Floor

Landing

Bathroom

Bedroom One

Bedroom Two

Bedroom Three

Externally

Front Garden

Rear Garden



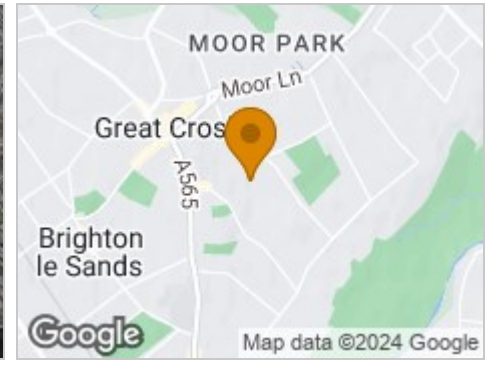
## Road Map



## Hybrid Map



## Terrain Map



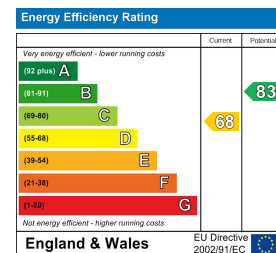
## Floor Plan



## Viewing

Please contact our Michael Moon Office on 0151 924 1000 if you wish to arrange a viewing appointment for this property or require further information.

## Energy Efficiency Graph



These particulars, whilst believed to be accurate are set out as a general outline only for guidance and do not constitute any part of an offer or contract. Intending purchasers should not rely on them as statements of representation of fact, but must satisfy themselves by inspection or otherwise as to their accuracy. No person in this firm's employment has the authority to make or give any representation or warranty in respect of the property.