



16 Circle 109 Henry Street

, Liverpool, L1 5BU

Guide price £130,000

For sale Via Auction

Welcome to an enticing investment opportunity nestled in the heart of L1. This two-bedroom apartment boasts a history of robust rental income, making it an ideal addition to any investor's portfolio.

The apartment itself comprises of hallway leading to two bedrooms, en-suite shower room, bathroom and open plan kitchen and living space benefitting from floor to ceiling windows and a private balcony which enhances the sense of openness, creating a bright and airy ambiance throughout.

Details to be verified

Lease length 999 year lease from 2006
Service charge costs £1,749.84 per annum
Ground rent £100 per annum
EWS1 form in place
Council Tax band C
Tenanted on a fixed term tenancy until 14th July 2025 achieving £1100
Allocated parking for one car.

Please call 01517099638 or email lauren@bluerowhomes.co.uk

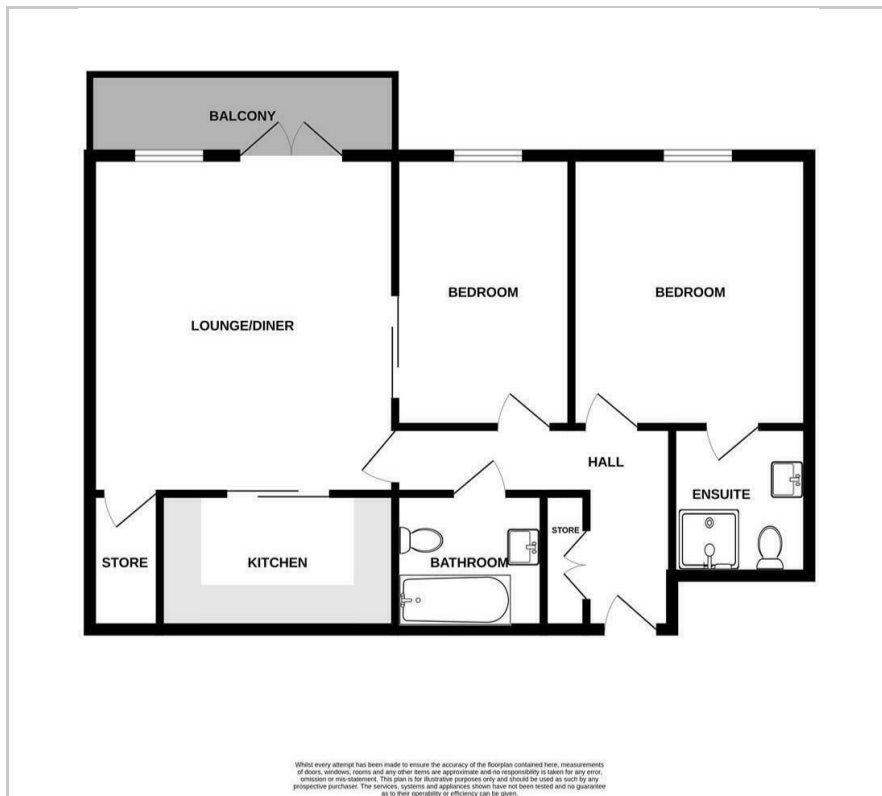
- Balcony
- Underground allocated parking
- EWS1 Certificate in place
- Rental history since 2011
- Two double bedrooms
- En-suite shower room
- L1 Location
- Double glazed windows
- 999 year lease

Viewing

Please contact our Michael Moon Office on 0151 924 1000 if you wish to arrange a viewing appointment for this property or require further information.



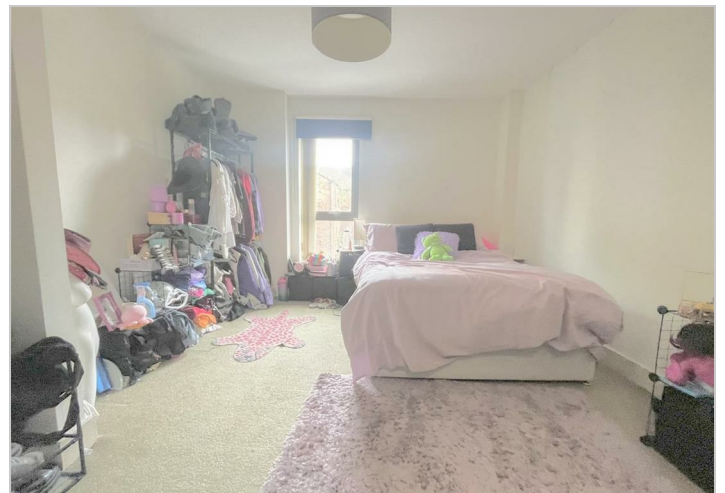
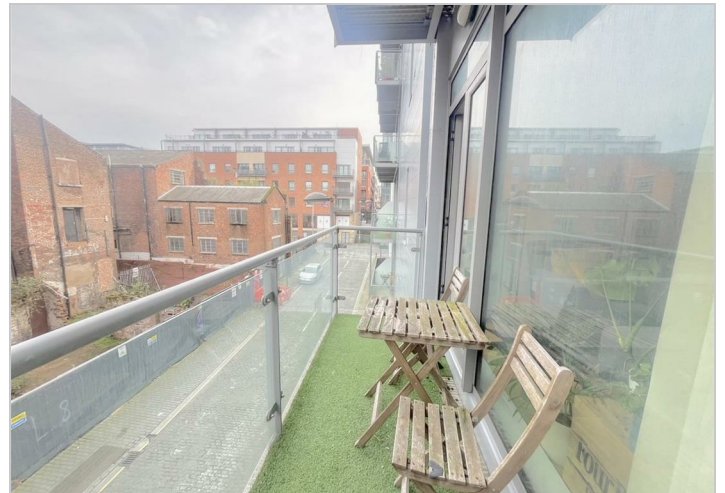
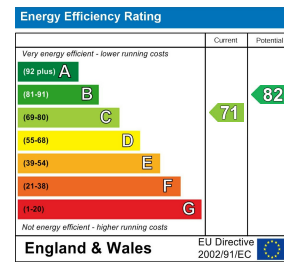
Floor Plan



Area Map



Energy Efficiency Graph



These particulars, whilst believed to be accurate are set out as a general outline only for guidance and do not constitute any part of an offer or contract. Intending purchasers should not rely on them as statements of representation of fact, but must satisfy themselves by inspection or otherwise as to their accuracy. No person in this firm's employment has the authority to make or give any representation or warranty in respect of the property.