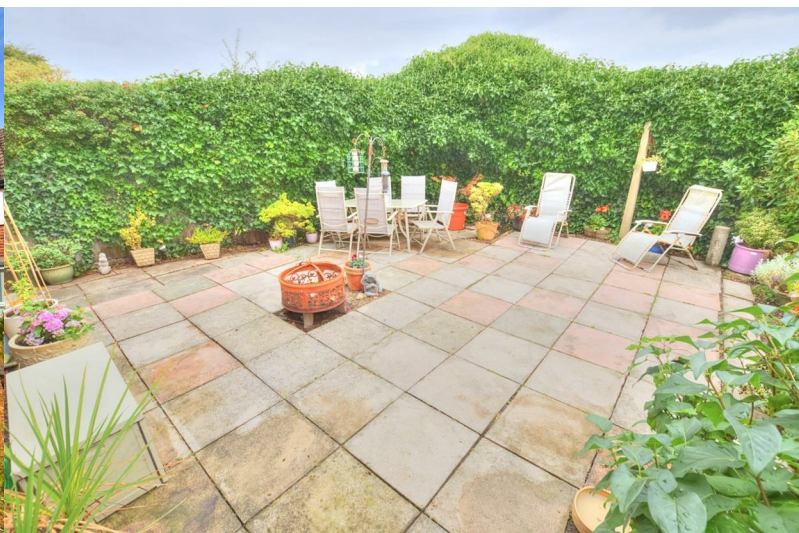




6 Chester Close

, Liverpool, L23 9TP

Offers in the region of £230,000



6 Chester Close

, Liverpool, L23 9TP

Offers in the region of £230,000



Ground Floor

Entrance Hall

6'0 x 12'0 (1.83m x 3.66m)

UPVC frosted double glazed door to front elevation, radiator, hardwood flooring, alarm box.

Lounge

13'04 x 11'08 (4.06m x 3.56m)

UPVC double glazed bay style window to front elevation, radiator, hardwood flooring, gas fire with feature surround.

Kitchen/Diner

9'03 x 19'09 (2.82m x 6.02m)

UPVC double glazed window and door to rear elevation, range of wall and base units, stainless steel sink with mixer tap, integrated dishwasher, extractor fan, downlights.

First Floor

Landing

7'08 x 6'09 (2.34m x 2.06m)

UPVC frosted double glazed window to side elevation, loft access.

Bedroom One

11'08 x 12'02 (3.56m x 3.71m)

UPVC double glazed window to front elevation, radiator. tv point.

Bedroom Two

11'10 x 9'04 (3.61m x 2.84m)

UPVC double glazed window to rear elevation, radiator, two storage cupboards.

Bedroom Three

8'03 x 8'10 (2.51m x 2.69m)

UPVC double glazed window to front elevation, radiator.

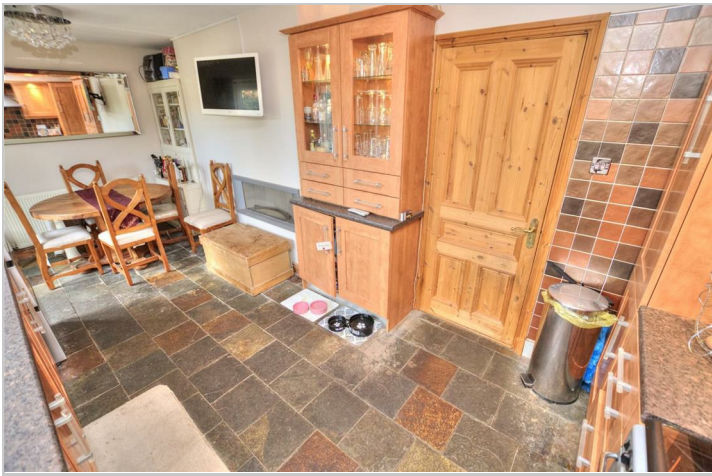
Bathroom

7'07 x 5'08 (2.31m x 1.73m)

UPVC frosted double glazed windows to side and rear elevation, full tiled, wash hand basin, WC, bath, chrome towel rail, downlights.

Externally

On street parking with side access, to the rear is a low maintenance rear garden, mature shrubs and trees, two outbuildings and side access.



Road Map



Hybrid Map



Terrain Map



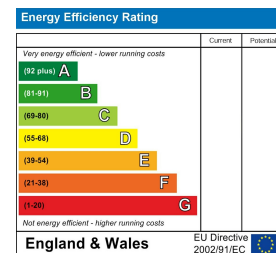
Floor Plan



Viewing

Please contact our Michael Moon Office on 0151 924 1000 if you wish to arrange a viewing appointment for this property or require further information.

Energy Efficiency Graph



These particulars, whilst believed to be accurate are set out as a general outline only for guidance and do not constitute any part of an offer or contract. Intending purchasers should not rely on them as statements of representation of fact, but must satisfy themselves by inspection or otherwise as to their accuracy. No person in this firm's employment has the authority to make or give any representation or warranty in respect of the property.