



**FLAT 3, CHERRY COURT NEW ROAD,  
MITCHAM, LONDON, CR4 4JN**

***£225,000 Share of Freehold***



**CHRISTOPHER ST. JAMES**  
Established 1976

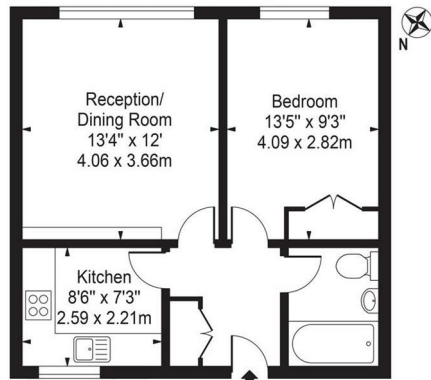
Residential / Commercial / Land & Development

**020 8296 1270**

**[www.csj.eu.com](http://www.csj.eu.com)**

**[info@csj.eu.com](mailto:info@csj.eu.com)**

Cherry Court,  
Mitcham, CR4 4JN  
Approx. Gross Internal Area 462 Sq Ft - 42.92 Sq M



Ground Floor

For Illustration Purposes Only - Not To Scale - Floor Plan by interDesign Photography  
www.interdesignphotography.com  
This floor plan should be used as general outline for guidance only.  
All measurements are approximate and for illustration purposes only as defined by the RICS Code of Measuring Practice ©2016.

## Description

Ground floor flat situated within a purpose built development comprising entrance hall, reception room, double bedroom and family bathroom.

The property is being sold with the benefit of off street parking and a share of freehold.

Council Tax: Sutton Band C

EPC Rating: TBC

## VIEWINGS

Viewings available daily

Please contact our residential team on 020 8296 1270 alternatively by email

[info@csj.eu.com](mailto:info@csj.eu.com)



## THE SMALL PRINT

Christopher St James, our clients and any joint agents give notice that:

- 1) They have no authority to make or give any representations or warranties in relation to the property. These particulars do not form part of any offer or contract and must not be relied upon as statements or representations of fact.
- 2) Any areas, measurements or distances are approximate. The text, photographs and plans are for guidance only and not necessarily comprehensive. It should not be assumed that the property has all necessary planning, building, regulation or other consents and Christopher St James have not tested any services, equipment or facilities. Purchasers must satisfy themselves by inspection or otherwise.

**Christopher St James**  
61 High Street Colliers  
London  
SW19 2JF



**CHRISTOPHER ST. JAMES**  
Established 1976

Residential / Commercial / Land & Development

**020 8296 1270**  
**[www.csj.eu.com](http://www.csj.eu.com)**  
**[info@csj.eu.com](mailto:info@csj.eu.com)**