



GUILDCREST ESTATES



## Plot 62, 8 Kingsbury Avenue Manston, Ramsgate, CT12 5NG £1,550 Per month

### RENTAL

#### The Woburn

This stunning 3 bedroom semi-detached property invites you to experience the perfect blend of comfort, style and modern living.

The light and spacious entrance hall with Moduleo LVT, provides access to the kitchen/diner, large downstairs cupboard, downstairs cloakroom and lounge.

In the kitchen you will find an exclusively designed kitchen, consisting of integrated appliances, a washer/dryer, dishwasher and fridge/freezer, creating a simple yet elegant feel to the heart of the home. The kitchen/diner provides a light and airy environment, perfect for family mealtimes or entertaining guests.

Double doors open from the kitchen/diner to the lounge with luxurious carpets and patio doors leading out to the garden.

Upstairs, you will find three good-sized, light bedrooms and a family bathroom. The bathroom is fully tiled with modern sanitaryware in white and a heated towel rail for a warm and cozy feel.

The front garden is fully landscaped and the rear garden is laid to turf and patio. The secure back garden space is

- RENTAL AVAILABLE SEPTEMBER 2025
- 3 BEDROOM SEMI-DETACHED HOUSE
- BESPOKE FITTED KITCHEN
- INTEGRATED KITCHEN APPLIANCES
- FULLY TILED BATHROOM
- EXCELLENT LOCATION
- GARDEN WITH PATIO AND TURF

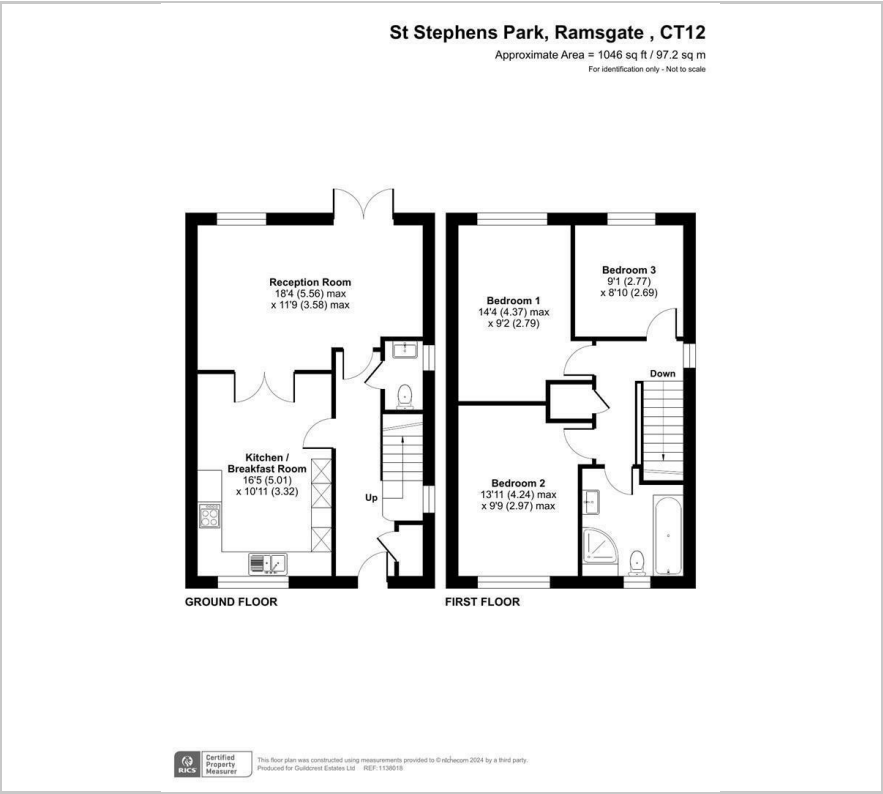
### Viewing

Please contact our Manston Office on 01843 272 200 if you wish to arrange a viewing appointment for this property or require further information.





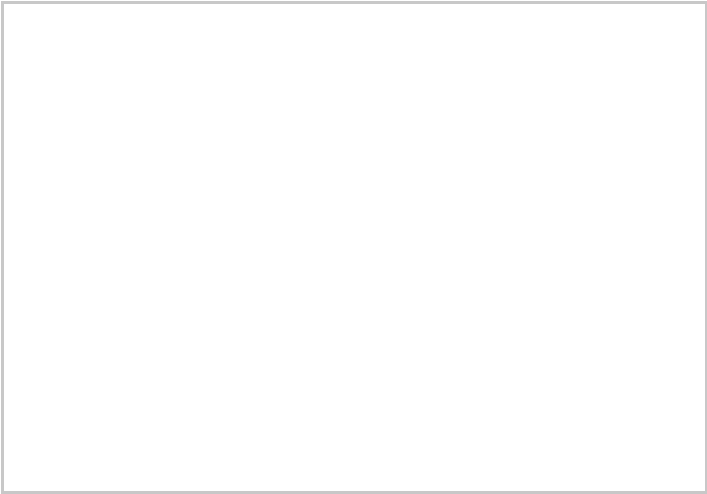
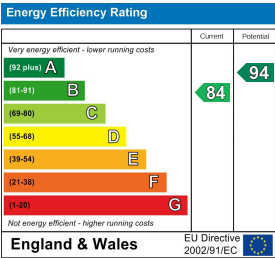
Floor Plan



Area Map



Energy Efficiency Graph



These particulars, whilst believed to be accurate are set out as a general outline only for guidance and do not constitute any part of an offer or contract. Intending purchasers should not rely on them as statements of representation of fact, but must satisfy themselves by inspection or otherwise as to their accuracy. No person in this firms employment has the authority to make or give any representation or warranty in respect of the property.