



GUILDCREST ESTATES



Willow Tree Barn Grinsell Hill, Minster, Ramsgate CT12 5DP



Grinsell Hill, Minster, Ramsgate  
CT12 5DP

**£1,050,000**

Willow Tree Barn is a detached converted barn that's bursting with character, with oak beams, exposed brick & wooden features throughout, offering bright, spacious and versatile family home in a quiet location.

As you approach the property, you are greeted by a private gated, gravel drive, offering plenty of parking and landscaped gardens.

Stepping inside you will find a modern fully fitted kitchen with butler sink, plenty of storage, oven, extractor and integrated appliances, which seamlessly flows into the large open plan dining area/day room, with French doors revealing the beautiful garden, perfect for enjoying a morning coffee or hosting summer barbecues.

There is a further separate lounge with a vaulted ceiling dual aspect bi-folding doors overlooking the grounds, along with a small office/playroom & two bedrooms with en-suite shower rooms, and separate modern family bathroom, offering flexibility and space.

Venturing upstairs, via the oak staircase, are two further bedrooms, each with en-suite facilities and a large storage cupboard. Outside, is a fully heated swimming pool, with sunbathing areas, a pool house with changing rooms and cloakroom. There are further outbuildings including a wooden cabin with a bar and hot tub, perfect for hosting gatherings or simply unwinding after a long day.







The gardens are surrounded by mature plants and trees, providing a serene retreat nestled in a quiet rural location, with stunning views of the beautiful Kent countryside and the convenience of being close to the picturesque village of Minster. The characterful barn has a new security system installed offering peace of mind. If you are seeking a home that seamlessly blends character, charm, and modern amenities, look no further. This barn at Grinsell Hill is not just a property, it's a lifestyle waiting to be embraced.

Council Tax Band C







GUILDCREST ESTATES

## Key Features

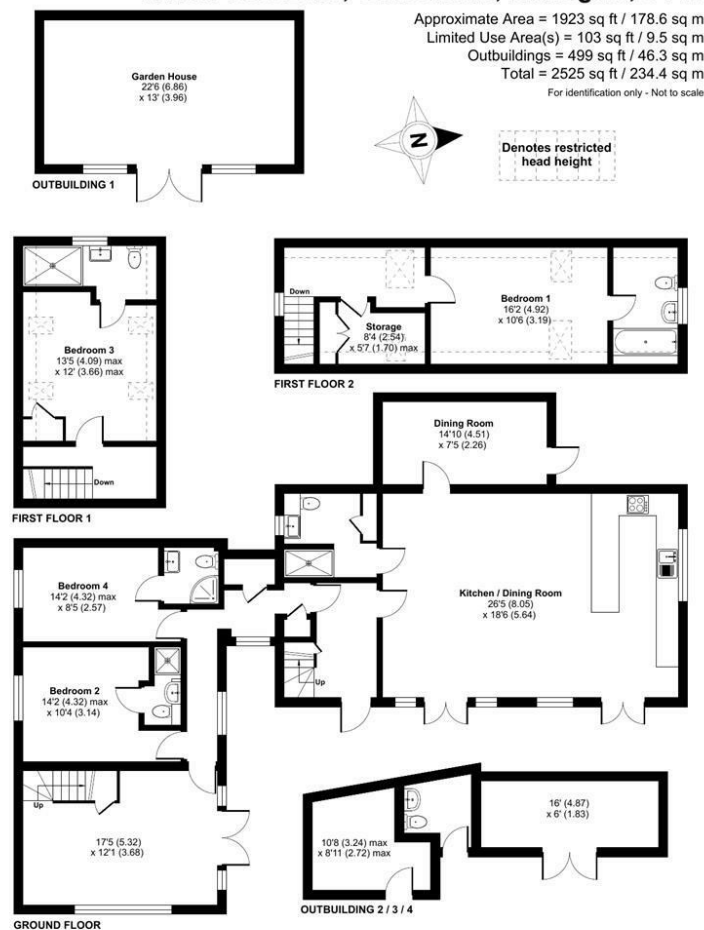
- CHARMING CONVERTED BARN
- 4 BEDROOMS WITH EN-SUITS
- AMPLE PARKING
- HEATED OUTDOOR SWIMMING POOL
- STUDY/OFFICE
- TWO LOUNGES
- COUNTRYSIDE LOCATION
- ENTERTAINMENT CABIN WITH HOT TUB
- LARGE GARDEN
- PRIVATE DRIVE WITH GATES

## Important Information

Freehold  
House - Detached  
1923.00 sq ft  
Council Tax Band C  
EPC Rating D

£1,050,000

### Willow Tree Barn, Grinsell Hill, Ramsgate, CT12



Floor plan produced in accordance with RICS Property Measurement 2nd Edition, Incorporating International Property Measurement Standards (IPMS2 Residential). © richcom 2024. Produced for Guildcrest Estates Ltd. REF: 1214002



Energy Efficiency Rating		
	Current	Potential
Very energy efficient - lower running costs		
(92 plus) A		
(81-91) B		
(69-80) C		
(55-68) D		
(39-54) E		
(21-38) F		
(1-20) G		
Not energy efficient - higher running costs		
England & Wales	EU Directive 2002/91/EC	EU Directive 2002/91/EC

Environmental Impact (CO <sub>2</sub> ) Rating		
	Current	Potential
Very environmentally friendly - lower CO <sub>2</sub> emissions		
(92 plus) A		
(81-91) B		
(69-80) C		
(55-68) D		
(39-54) E		
(21-38) F		
(1-20) G		
Not environmentally friendly - higher CO <sub>2</sub> emissions		
England & Wales	EU Directive 2002/91/EC	EU Directive 2002/91/EC



01843 272200 [www.guildcrestestates.co.uk](http://www.guildcrestestates.co.uk)

1 The Laurels, Manston Business Park, Ramsgate, Kent CT12 5NQ



Guildcrest Estates Ltd. Registered Office 1 Percy Road, Broadstairs, Kent CT10 3LB. Company Number: 13135084 Registered In England & Wales | VAT Number: 374 4288 71

**Disclaimer** These particulars, whilst believed to be accurate are set out as a general outline only for guidance and do not constitute any part of an offer or contract. Intending purchasers should not rely on them as statements of representation of fact, but must satisfy themselves by inspection or otherwise as to their accuracy. No person in this firm's employment has the authority to make or give any representation or warranty in respect of the property.