



GUILDCREST ESTATES



140 Windermere Avenue, Ramsgate CT11 0QB



3



1



1





GUILDCREST ESTATES

Windermere Avenue, Ramsgate  
CT11 0QB

**£345,000**

Welcome to this charming link semi detached house located on Windermere Avenue in the delightful town of Ramsgate. This modern family home boasts three well-proportioned bedrooms, making it an ideal choice for families or those seeking extra space. The property features a good-sized reception room, perfect for relaxing or entertaining guests, and a contemporary kitchen that is both functional and stylish plus the house offers triple glazing throughout the house.

One of the standout features of this home is the private garden, providing a serene outdoor space for children to play or for hosting summer barbecues. The property also benefits from a garage and ample off-road parking, accommodating up to three/four vehicles, which is a rare find in this popular location.

Situated in a sought-after area, this home is conveniently close to local amenities, schools, and parks, making it an excellent choice for families. With its modern design and practical features, this property offers a wonderful opportunity to enjoy comfortable living in Ramsgate. Don't miss the chance to make this lovely house your new home.

Public transport in the area is fantastic, The Thanet Loop is a regular local bus services and the newly opened Thanet parkway railway







station is also close by providing high speed links to London. Easy access to the Thanet Way (A299), and links to the M2 motorway.

Council Tax Band- C

Freehold

Mains water, sewer, electric, gas, gas central heating

Fixed wireless broadband







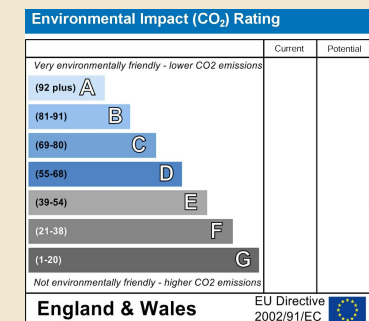
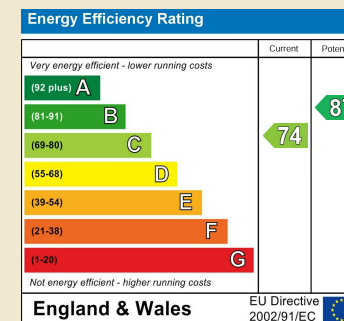
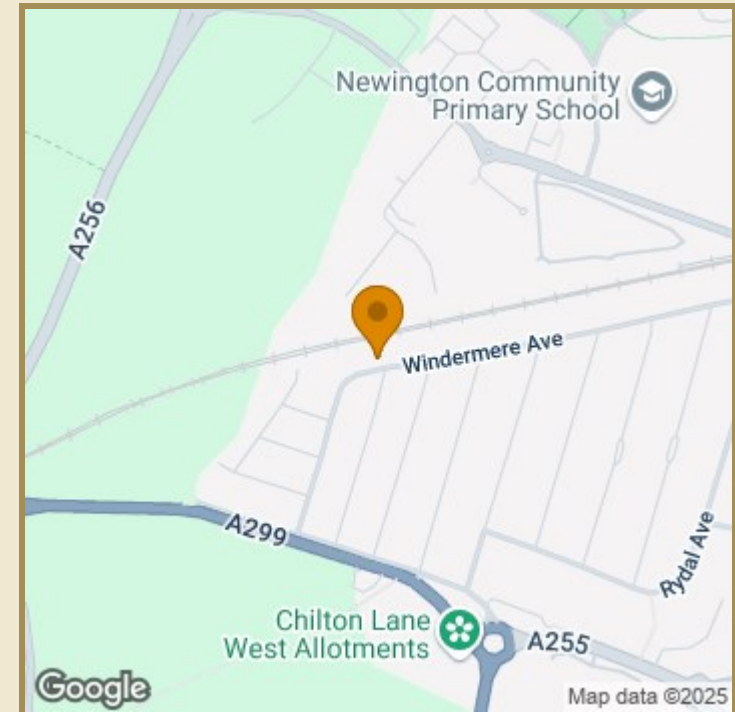
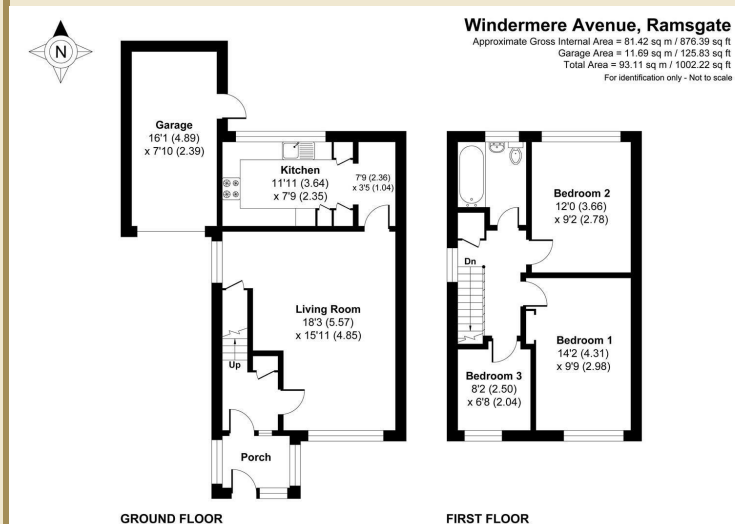
GUILDCREST ESTATES

## Key Features

## Important Information

Freehold  
House - Semi-Detached  
876.00 sq ft  
Council Tax Band C  
EPC Rating C

£345,000



01843 272200 [www.guildcrestestates.co.uk](http://www.guildcrestestates.co.uk)

1 The Laurels, Manston Business Park, Ramsgate, Kent CT12 5NQ



Guildcrest Estates Ltd. Registered Office 1 Percy Road, Broadstairs, Kent CT10 3LB. Company Number: 13135084 Registered In England & Wales | VAT Number: 374 4288 71

**Disclaimer** These particulars, whilst believed to be accurate are set out as a general outline only for guidance and do not constitute any part of an offer or contract. Intending purchasers should not rely on them as statements of representation of fact, but must satisfy themselves by inspection or otherwise as to their accuracy. No person in this firm's employment has the authority to make or give any representation or warranty in respect of the property.