



GUILDCREST ESTATES



28 Tothill Street, Minster, Ramsgate CT12 4AG



Tothill Street, Minster, Ramsgate
CT12 4AG

£475,000

Located in the charming village of Minster in Ramsgate, this superb deceptively spacious detached house from the 1960s which offers a perfect blend of comfort and space.

As you step inside, you are greeted by a spacious and wonderful open plan lounge/dining room/kitchen which has been extended by the current owners and is ideal for entertaining guests or simply relaxing with your family. The lounge offers a wood burning stove to give you that cosy feel on those cold winters nights and beautiful ceramic flooring throughout downstairs. For added convenience, this house comes with a utility room and a cloakroom, helping you stay organised and efficient in your daily routines.

With three bedrooms and beautiful family bathroom, this extended family home provides ample space for everyone to enjoy. The property boasts a highly sought-after location, ensuring peace and tranquility while still being close to local amenities.

Another one of the standout features of this property is the extensive secluded rear garden, offering a private oasis where you can unwind and enjoy the outdoors. Parking will never be an issue with space for up to four vehicles, making coming home a breeze.





If you are looking for a home that combines modern comfort with a touch of character in a desirable village setting, this property on Tothill Street is a must-see. Don't miss out on the opportunity to make this house your new home.

Situated in the picturesque village of Minster, with all local amenities close by. In the village there are a variety of shops, post office, doctor's surgery, public houses, restaurants with Blue Flag beaches close by plus primary school which offers after school club plus a nursery. Minster has a main line station and Thanet Parkway station is close by, with fast links into London.

Council Tax Band E

Freehold

Mains water, sewerage, electricity and gas central heating.

Fixed wireless broadband





GUILDCREST ESTATES

Key Features

- Extended and deceptively spacious family home
- 3 bedrooms
- Stunning open plan lounge/dining Room and kitchen
- Excellent condition throughout
- Beautiful private and good size rear garden
- Sought after village location
- Garage and plenty of off road parking
- Council Tax Band E

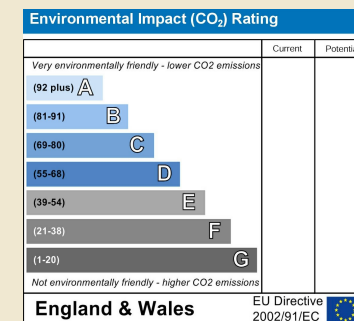
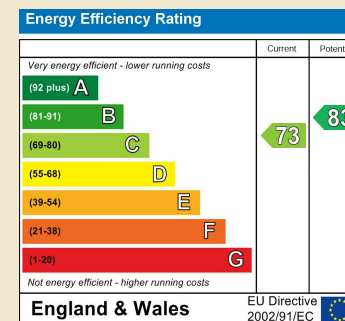
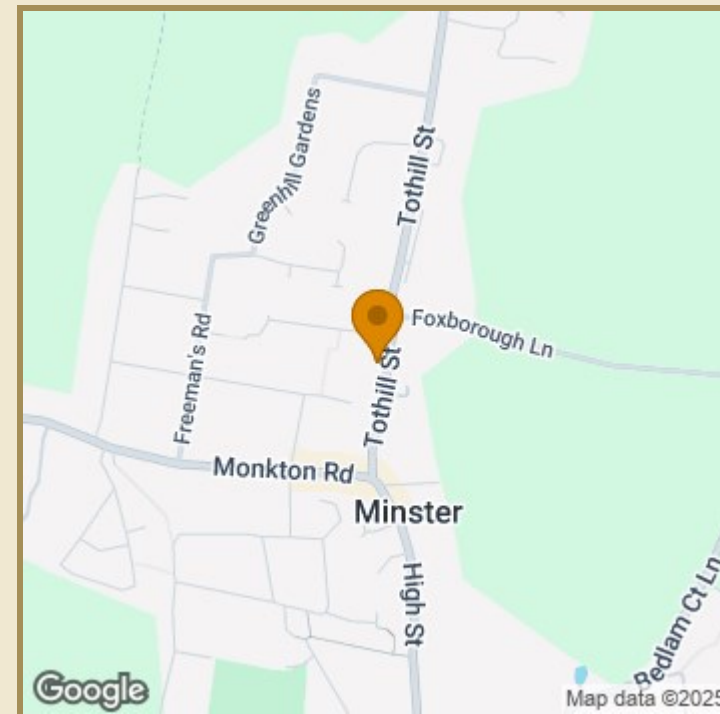
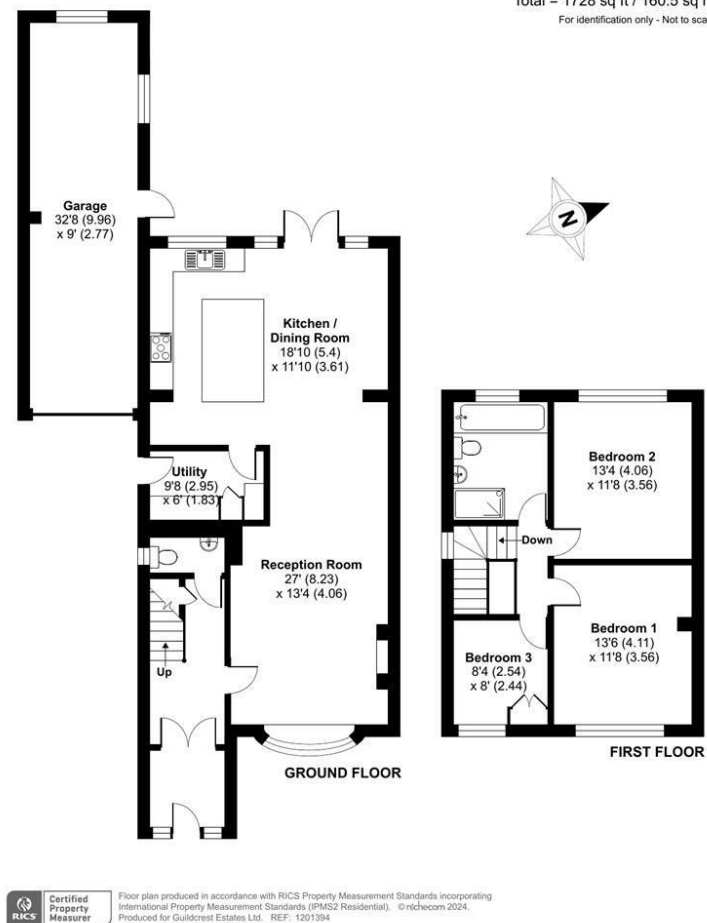
Important Information

Freehold
House - Detached
sq ft
Council Tax Band E
EPC Rating C

£475,000

Tothill Street, Minster, Ramsgate, CT12

Approximate Area = 1429 sq ft / 132.7 sq m
Garage = 299 sq ft / 27.8 sq m
Total = 1728 sq ft / 160.5 sq m
For identification only - Not to scale



01843 272200 www.guildcrestestates.co.uk

1 The Laurels, Manston Business Park, Ramsgate, Kent CT12 5NQ



Guildcrest Estates Ltd. Registered Office 1 Percy Road, Broadstairs, Kent CT10 3LB. Company Number: 13135084 Registered In England & Wales | VAT Number: 374 4288 71

Disclaimer These particulars, whilst believed to be accurate are set out as a general outline only for guidance and do not constitute any part of an offer or contract. Intending purchasers should not rely on them as statements of representation of fact, but must satisfy themselves by inspection or otherwise as to their accuracy. No person in this firm's employment has the authority to make or give any representation or warranty in respect of the property.