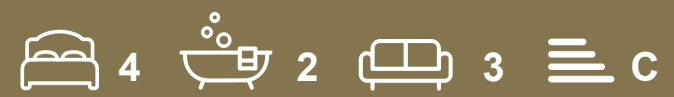




GUILDCREST ESTATES



1 Nethercourt Hill
Ramsgate £680,000
Council Tax F





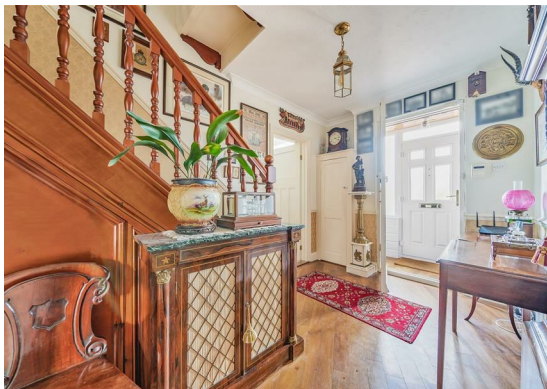
GUILDCREST ESTATES

Nethercourt Hill , Ramsgate, CT11 0RX Asking price £680,000

Located on the popular Nethercourt Hill in Ramsgate, this impressive detached house built in the late 1920s offers a perfect blend of character and modern comfort. Boasting four bedrooms and three reception rooms, this property is ideal for a growing family seeking a spacious and elegant home.

As you step inside, you'll be greeted by a wealth of period features that add charm and character to the house. You will find 3 reception rooms, modern kitchen with shaker style wall and base units and some integrated appliances, utility room and downstairs WC. On the first floor you will come across, family bathroom, 4 good size bedrooms the main bedroom comes with a luxurious en suite and a dressing room, providing a private sanctuary within this beautiful abode.

One of the standout features of this property is the double garage and a driveway that can accommodate approximately 6 to 7 vehicles, ensuring ample parking space for you and your

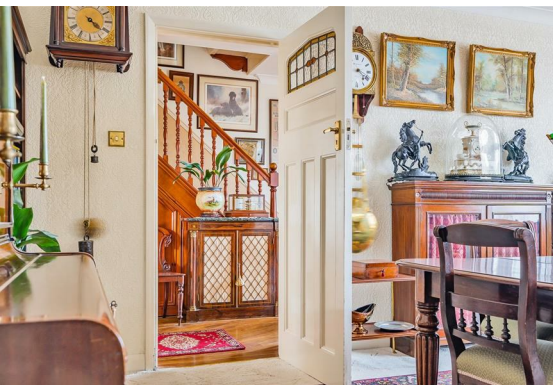
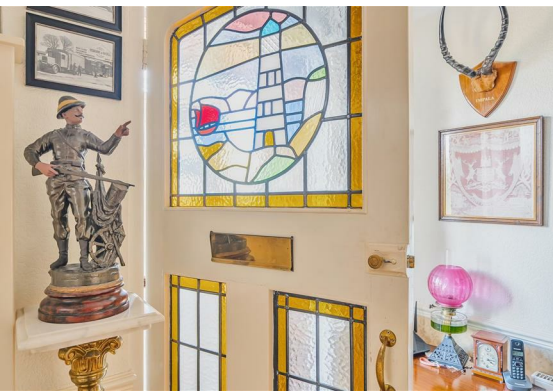




guests. Whether you're a car enthusiast or simply enjoy the convenience of parking without hassle, this home has you covered.

Located in a historic period, this house offers a unique opportunity to own a piece of architectural history while enjoying all the comforts of modern living. Don't miss out on the chance to make this stunning property your new family home just on the outskirts of Ramsgate and has travel links near by for the local Loop bus route, with Train Station a short walk away and local amenities on your door step.

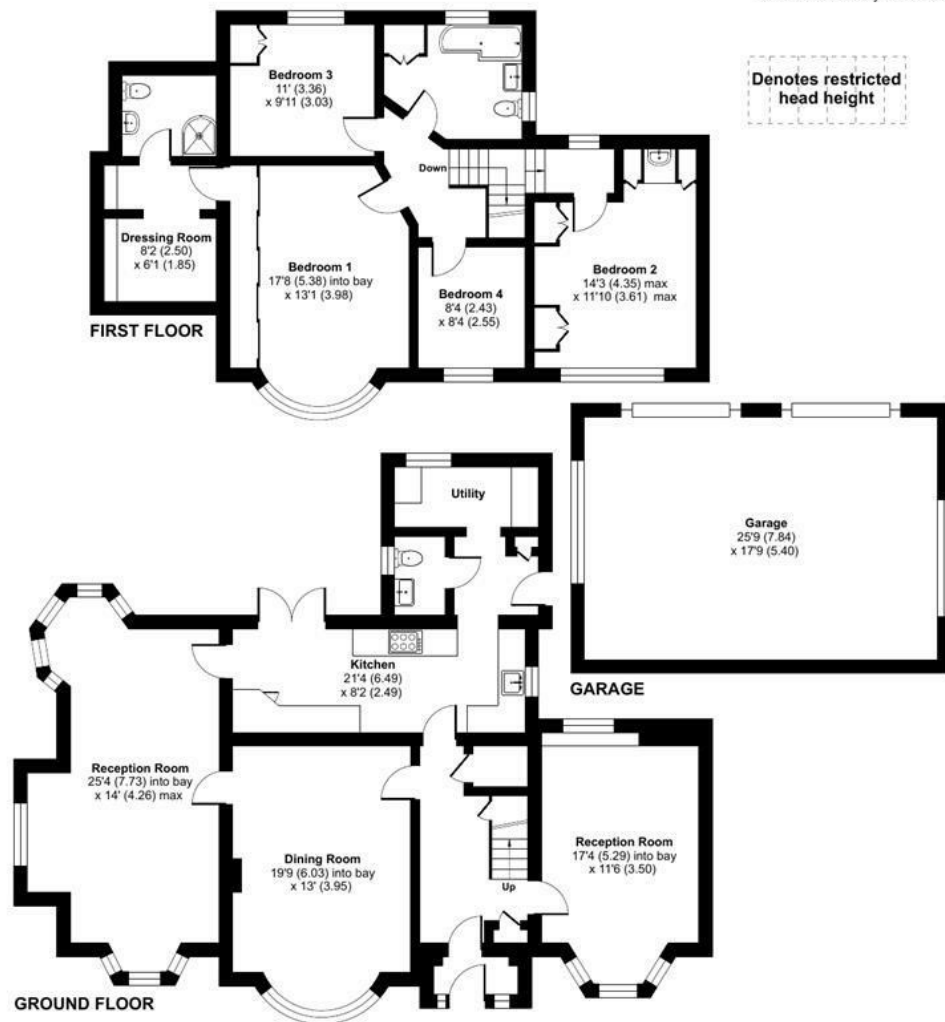
Council Tax- F



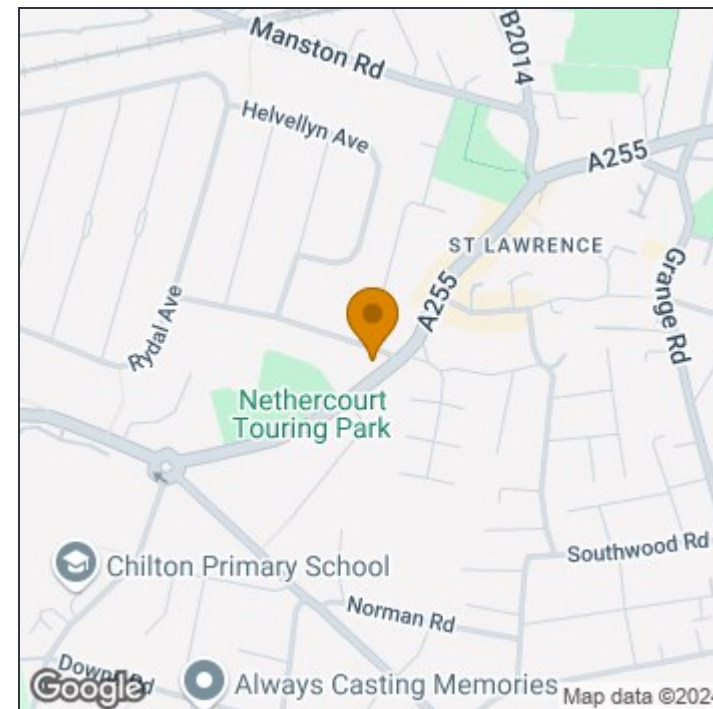
Nethercourt Hill, Ramsgate, CT11

Approximate Area = 2102 sq ft / 195.2 sq m
 Limited Use Area(s) = 10 sq ft / 0.9 sq m
 Garage = 456 sq ft / 42.3 sq m
 Total = 2568 sq ft / 238.4 sq m

For identification only - Not to scale



GUILDCREST ESTATES



Disclaimer

These particulars, whilst believed to be accurate are set out as a general outline only for guidance and do not constitute any part of an offer or contract. Intending purchasers should not rely on them as statements of representation of fact, but must satisfy themselves by inspection or otherwise as to their accuracy. No person in this firm's employment has the authority to make or give any representation or warranty in respect of the property.



Floor plan produced in accordance with RICS Property Measurement Standards incorporating International Property Measurement Standards (IPMS2 Residential). © nichecom 2024. Produced for Guildcrest Estates Ltd. REF: 1176164

Manston

1 The Laurels Manston Business Park, Ramsgate,
 Kent, CT12 5NQ

T: 01843 272 200

sales@guildcrestestates.co.uk

https://www.guildcrestestates.co.uk