



GUILDCREST ESTATES



St Stephens Park  
Manston, Ramsgate CT12

5NF



3



2



1







GUILDCREST ESTATES

**St Stephens Park  
Manston, Ramsgate, CT12  
5NE  
Prices from £380,000**

**\*\*Reserve Now\*\***

Last few remaining

THE HIGHGROVE

This charming semi-detached home, boasts a modern, bright interior.

The bright and spacious entrance hall leads to the open plan kitchen/diner, separate lounge with double doors to allow further open plan living, and a downstairs cloakroom. Upstairs you will find three bedrooms, an en-suite and the family bathroom.

This home has a landscaped front garden, rear garden laid to turf with an Indian Sandstone patio and boasts a single garage and driveway for 2 vehicles.

All-inclusive, this new home will be finished and ready for you to move in to, with NO ADDITIONAL COSTS.





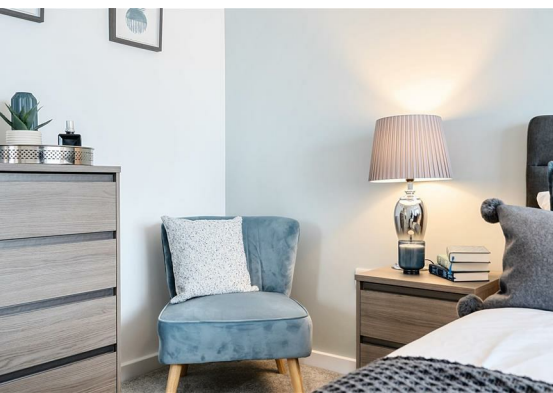
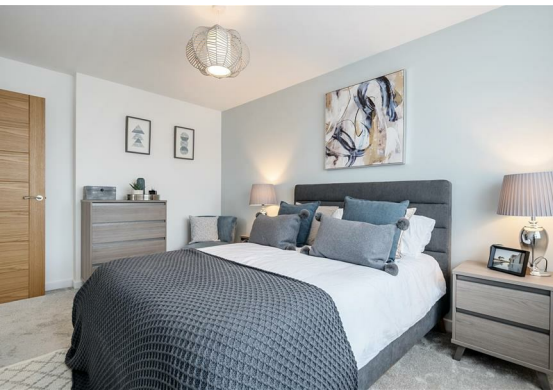


This home comes complete with moduleo LVT flooring and luxurious carpet throughout, oak internal doors and a bespoke, fully fitted Roma kitchen with integrated appliances and quartz worktops.

The fully tiled bathroom and en-suite feature modern white sanitary ware, including a free standing bath, separate showers, beautiful vanity units, illuminated mirrors and heated towel rails.

With everything taken care of for you, this new, energy-efficient house gives you the perfect home to start creating new memories. So why wait?

Inspired by serene park landscapes, St Stephen's Park features tree-lined avenues, a fun-filled children's play park, and ample open green spaces for you and your family to enjoy.

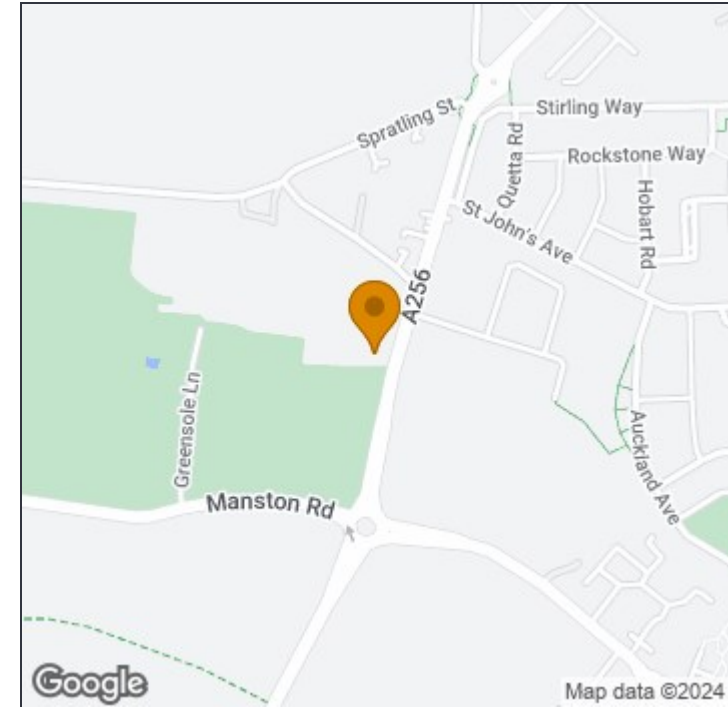
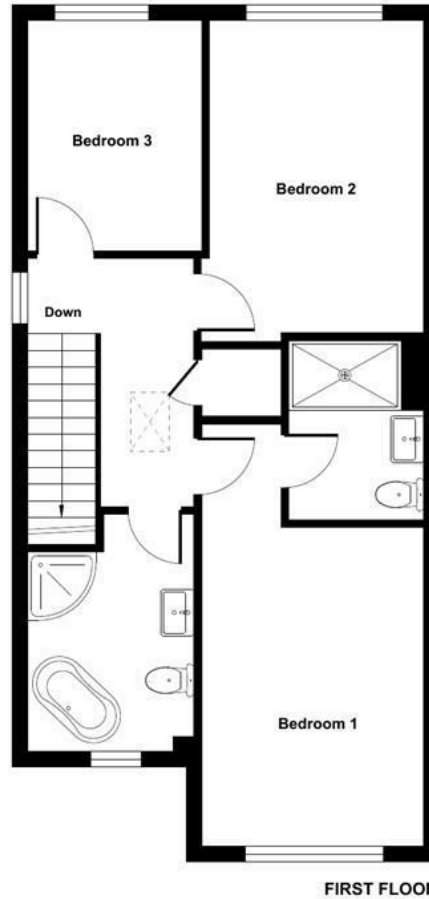
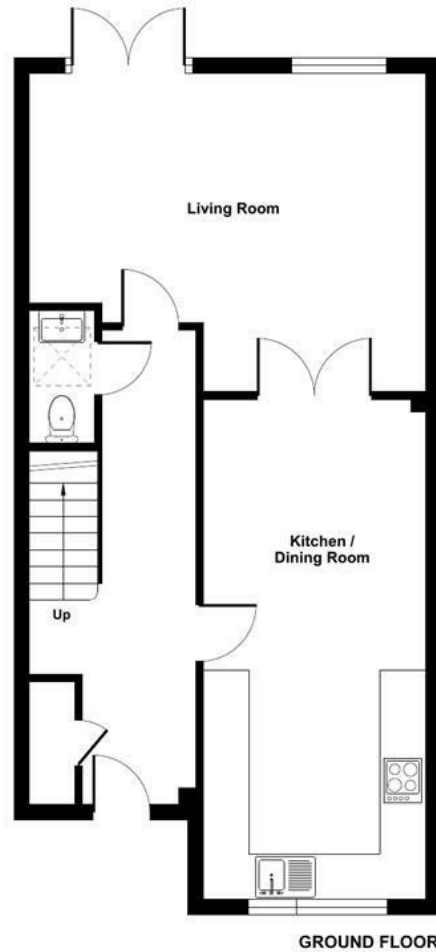


# St Stephens Park Road, Ramsgate, CT12

For identification only - Not to scale



GUILDCREST ESTATES



### Disclaimer

These particulars, whilst believed to be accurate are set out as a general outline only for guidance and do not constitute any part of an offer or contract. Intending purchasers should not rely on them as statements of representation of fact, but must satisfy themselves by inspection or otherwise as to their accuracy. No person in this firm's employment has the authority to make or give any representation or warranty in respect of the property.



This floor plan was constructed using measurements provided to © nichecom 2023 by a third party. Produced for Guildcrest Estates Ltd. REF: 962965

### Manston

1 The Laurels Manston Business Park, Ramsgate,  
Kent, CT12 5NQ

T: 01843 272 200

[sales@guildcrestestates.co.uk](mailto:sales@guildcrestestates.co.uk)

<https://www.guildcrestestates.co.uk>