



GUILDCREST ESTATES



2 Castle Drive
Margate CT9 4FN





GUILDCREST ESTATES

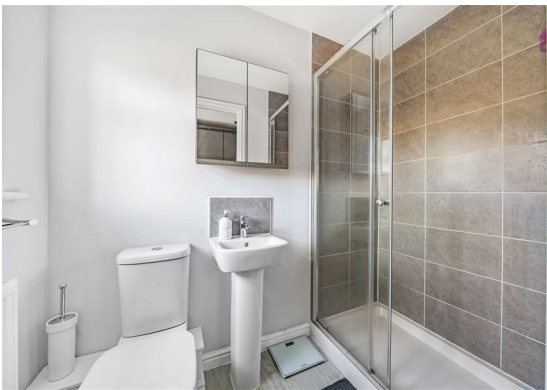
**Castle Drive
Margate, CT9 4FN
Asking price £385,000**

LOOK NO FURTHER, THE PERFECT FAMILY HOME CAN BE YOURS.

Situated in a central location and close to all amenities, from food shops, to retail outlets and restaurants, as well as entertainment venues including a cinema and a casino. This location has it all to offer.

This beautifully presented newly built three-bedroom detached home, has so much to offer and with benefits of being a turn key condition. It also comes with it's own allocated parking space and established rear garden.

The ground floor is comprised of an entrance hall with solid wood flooring throughout, kitchen/breakfast room with luxury wall and base units with integrated appliances including a dishwasher, fridge/freezer. This home also benefits from a separate utility room housing integrated washing machine, wine cooler and microwave as well as a cloakroom.





The lounge is light and airy with feature panel wall, built in shelving unit displaying a bio fuel fireplace, patio doors leading to a well sized garden with a pretty patio for summer relaxation.

The first floor has three well sized bedrooms with the master bedroom having a dressing area and en suite shower room. The further two bedrooms are of a very good size with family bathroom with feature tiled wall and as well as a bath with a thermostatic shower fitment over, W.C and vanity unit with hand basin.

This beautiful property needs to be viewed to appreciate the space and quality of finish.

Council Tax Band D
Service Charge £230 per annum



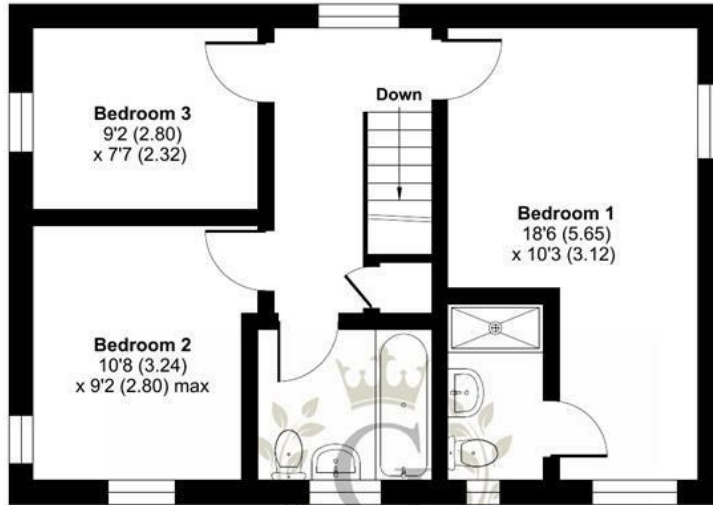
Castle Drive, Margate, CT9

Approximate Area = 1010 sq ft / 93.8 sq m

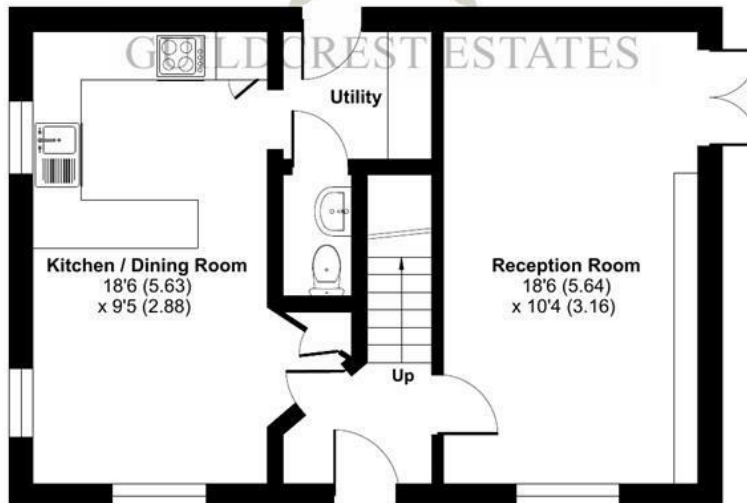
For identification only - Not to scale



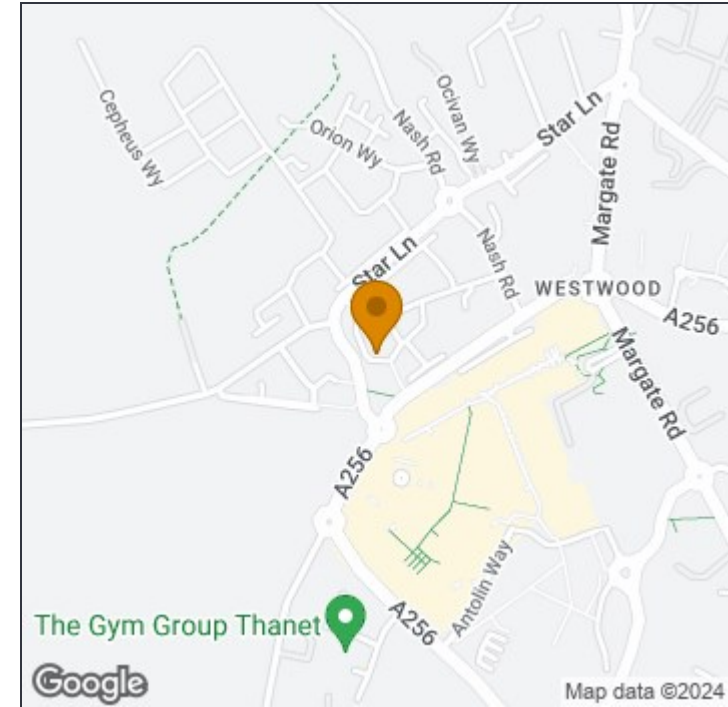
GUILDCREST ESTATES



FIRST FLOOR



GROUND FLOOR



Disclaimer

These particulars, whilst believed to be accurate are set out as a general outline only for guidance and do not constitute any part of an offer or contract. Intending purchasers should not rely on them as statements of representation of fact, but must satisfy themselves by inspection or otherwise as to their accuracy. No person in this firm's employment has the authority to make or give any representation or warranty in respect of the property.



Floor plan produced in accordance with RICS Property Measurement Standards incorporating International Property Measurement Standards (IPMS2 Residential). © nichecom 2024. Produced for Guildcrest Estates Ltd. REF: 1109328

Manston

1 The Laurels Manston Business Park, Ramsgate,
Kent, CT12 5NQ

T: 01843 272 200

sales@guildcrestestates.co.uk

<https://www.guildcrestestates.co.uk>