



GUILDCREST ESTATES



Plot 14 27 St Stephens Park
Road

Manston, Ramsgate CT12





GUILDCREST ESTATES

**27 St Stephens Park Road
Manston, Ramsgate, CT12
5NE**

Prices from £380,000

****Reserve Now****

Last few remaining

THE PENNINGTON

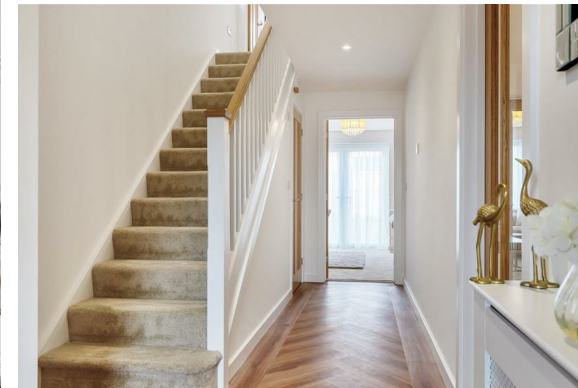
A stunning 3 bedroom semi-detached home, with a light, modern interior.

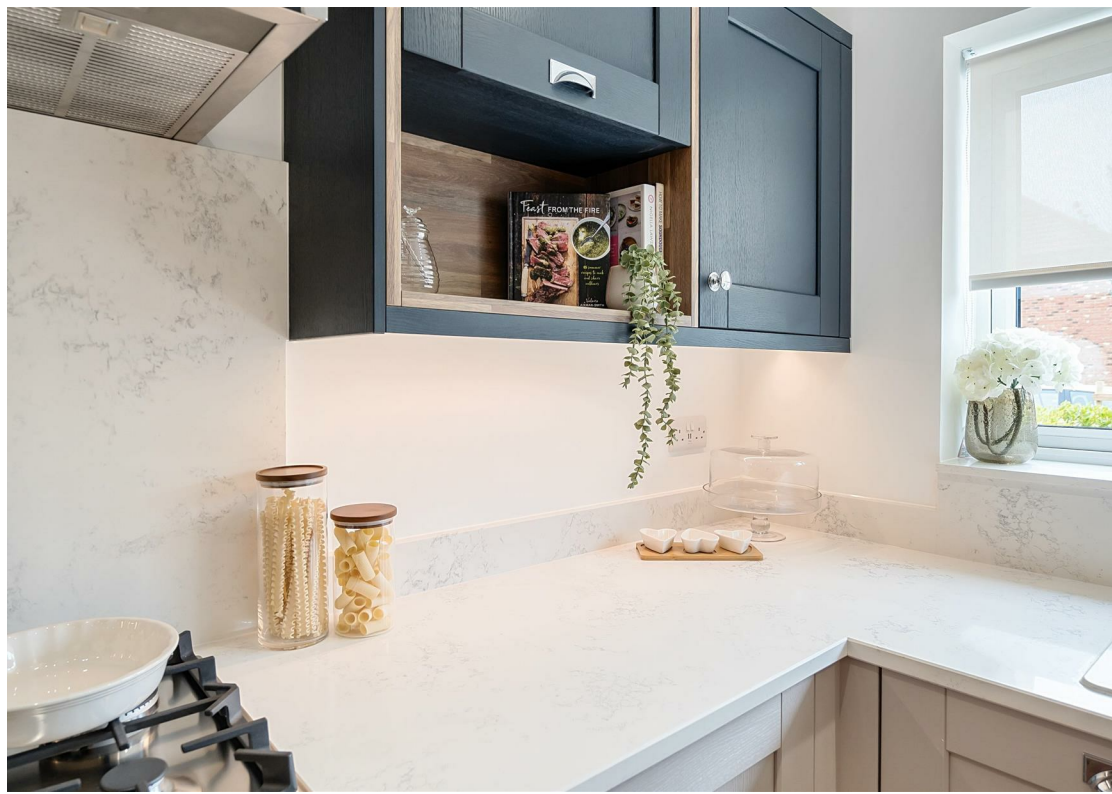
Step into the light and spacious entrance hall which leads to the open plan kitchen/diner, separate lounge with connecting double doors and downstairs cloakroom. Upstairs you will find 3 bedrooms, an ensuite and the family bathroom.

This property boasts a landscaped front garden, a rear garden laid to turf with an Indian Sandstone patio, single garage and driveway for 2 vehicles.

This stunning new home is all-inclusive, it will be finished and ready for you to move in to, with **NO ADDITIONAL COSTS.**

This home comes complete with





moduleo LVT flooring and luxurious carpet throughout, oak internal doors and a bespoke, fully fitted Roma kitchen with integrated appliances and quartz worktops.

The fully tiled bathroom and en-suite feature modern white sanitaryware, including a free standing bath, separate showers, beautiful vanity units, illuminated mirrors and heated towel rails.

With everything taken care of for you, this new, energy-efficient house gives you the perfect home to start creating new memories. So why wait?

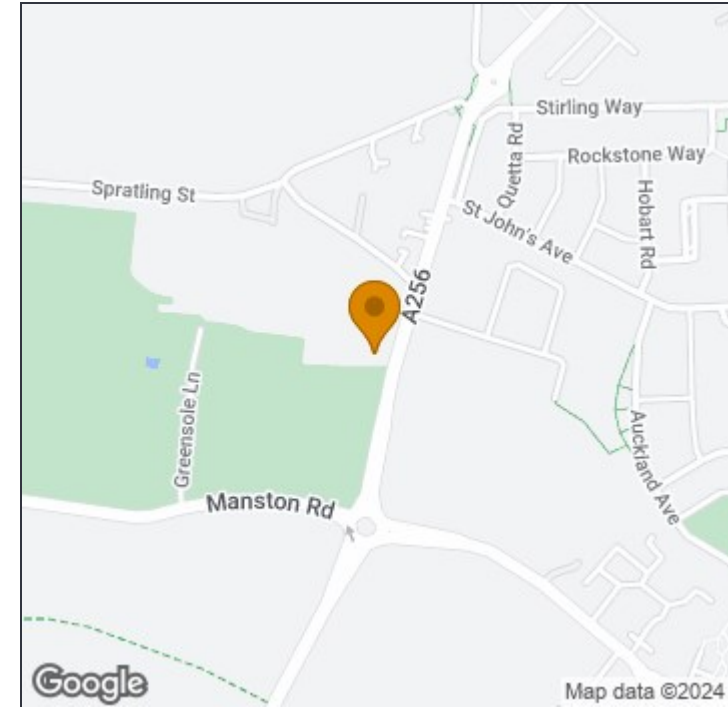
Experience comfort, convenience and style in this remarkable home that is just waiting to be yours.

St Stephens Park Road, Ramsgate, CT12

For identification only - Not to scale



GUILDCREST ESTATES



Disclaimer

These particulars, whilst believed to be accurate are set out as a general outline only for guidance and do not constitute any part of an offer or contract. Intending purchasers should not rely on them as statements of representation of fact, but must satisfy themselves by inspection or otherwise as to their accuracy. No person in this firm's employment has the authority to make or give any representation or warranty in respect of the property.



This floor plan was constructed using measurements provided to © nichecom 2023 by a third party. Produced for Guildcrest Estates Ltd. REF: 962965

Manston

The Sales Suite, Office 4 Maple Leaf Manston
Business Park, Ramsgate, Kent, CT12 5GJ

T: 01843 272 200

sales@guildcrestestates.co.uk

<https://www.guildcrestestates.co.uk>