



GUILDCREST ESTATES



The Forge Monkton Street
Monkton, Ramsgate CT12 4JR

 4  2  1  A



GUILDCREST ESTATES

**Monkton Street
Monkton, Ramsgate, CT12
4JR
£695,000**

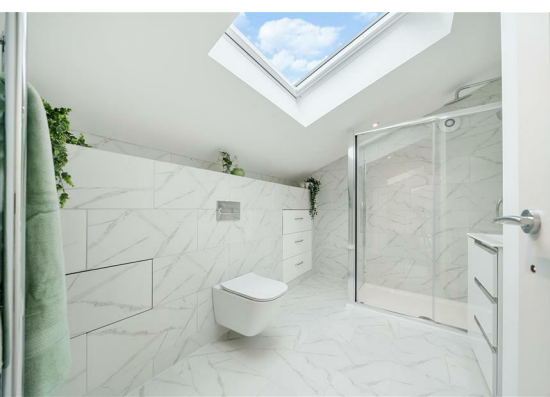
Nestled within the tranquility of a small Kentish village, surrounded by woodland views, this newly constructed 4 bedroom detached house epitomizes modern luxury and eco-friendly living. Boasting an array of sustainable features, state-of-the-art design and expansive living spaces, this property gives the perfect blend of sophistication and environmental consciousness.

This stunning house is bathed in natural light, the interiors are adorned with large, modern windows that not only frame picturesque views of the surrounding landscape but also contribute to the overall aesthetic, creating an ambiance that is both uplifting and refreshing.

Key Features include, Air Source Heat Pumps and Solar Panels allowing you to embrace sustainable living with cutting-edge technology, reducing the carbon footprint, and the luxury of under floor heating.

The open plan layout creates a fluid





transition between the living, dining, and kitchen areas, creating an atmosphere of connectivity and spaciousness. The modern kitchen featuring high quality appliances and a central island. This space is not only functional but also bespoke and well designed.

The ground floor has even more to offer from two ground floor double bedrooms, with the versatility of creating a home office or playroom and family bathroom which comes completely fully tiled and benefits from having a separate shower. The utility room has ample storage from full length units, housing for both washing machine and tumble dryer as well as the convenience of an additional sink.

Upstairs there are 2 further double bedrooms and dressing room with the master suite benefiting from a fully tiled ensuite.

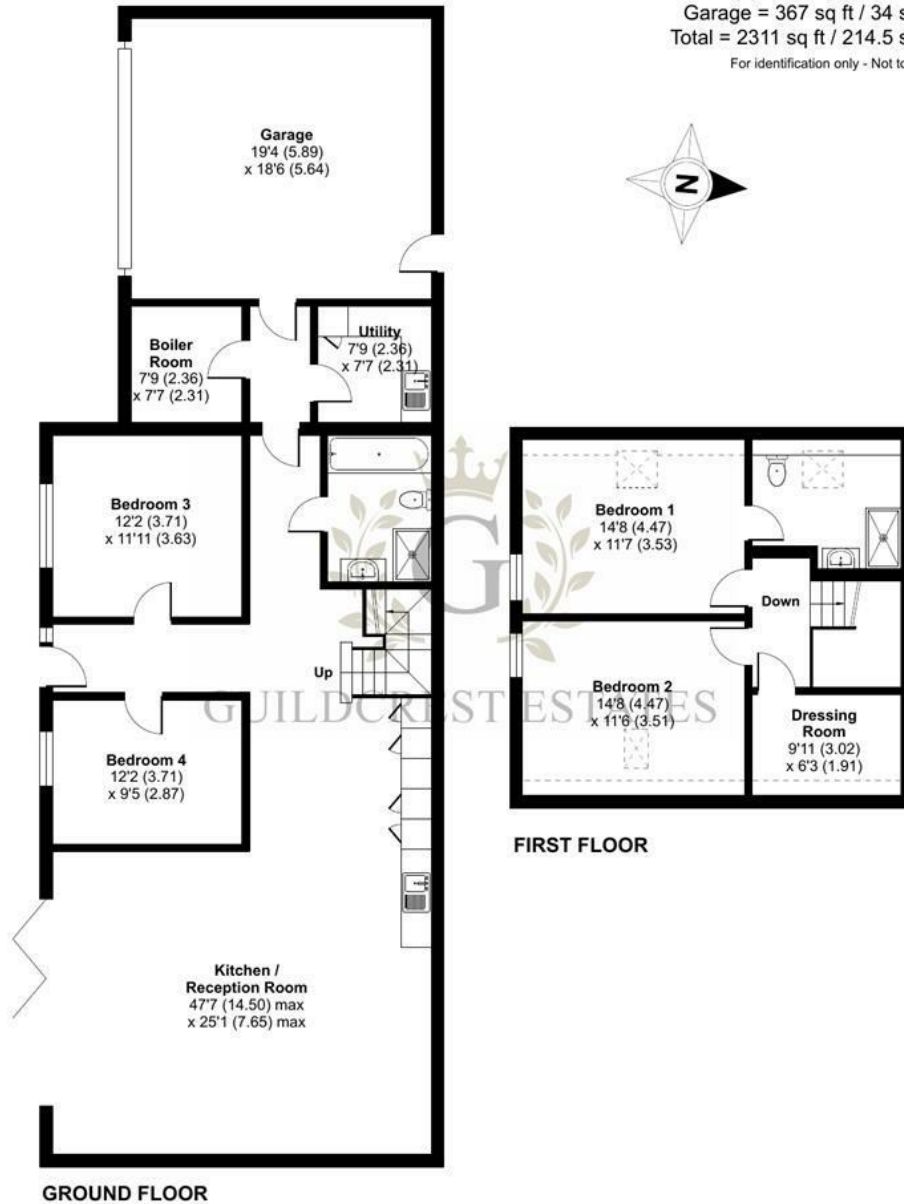
The enclosed and secluded garden is laid to lawn with a large patio area, ideal for entertaining. A double garage with electric doors, provides ample space for your vehicles and additional storage, with internal door to access the home.

Council Band F

Monkton Street, Monkton, CT12

Approximate Area = 1893 sq ft / 175.8 sq m
Limited Use Area(s) = 51 sq ft / 4.7 sq m
Garage = 367 sq ft / 34 sq m
Total = 2311 sq ft / 214.5 sq m

For identification only - Not to scale



Floor plan produced in accordance with RICS Property Measurement Standards incorporating International Property Measurement Standards (IPMS2 Residential). © nichecom 2024. Produced for Guildcrest Estates Ltd. REF: 1088446



GUILDCREST ESTATES



Disclaimer

These particulars, whilst believed to be accurate are set out as a general outline only for guidance and do not constitute any part of an offer or contract. Intending purchasers should not rely on them as statements of representation of fact, but must satisfy themselves by inspection or otherwise as to their accuracy. No person in this firm's employment has the authority to make or give any representation or warranty in respect of the property.

Manston

The Sales Suite, Office 4 Maple Leaf Manston
Business Park, Ramsgate, Kent, CT12 5GJ

T: 01843 272 200

sales@guildcrestestates.co.uk

<https://www.guildcrestestates.co.uk>