



GUILDCREST ESTATES



13 Victoria Road
Ramsgate CT11 8PP





GUILDCREST ESTATES

**Victoria Road
Ramsgate, CT11 8PP
Asking price £290,000**

The property is ideally located close to the town center and the golden sand of Ramsgate beach, and enjoys something of a Renaissance with its large amount of Grade II Listed property, many set within elegant Regency squares, or overlooking the sea, others with links to or influenced by the architect Augustus Pugin. The Royal Harbour has a variety restaurants, cafes and bars emerge alongside quirky independent retail outlets, some utilising the arches on the quayside beneath Royal Parade.

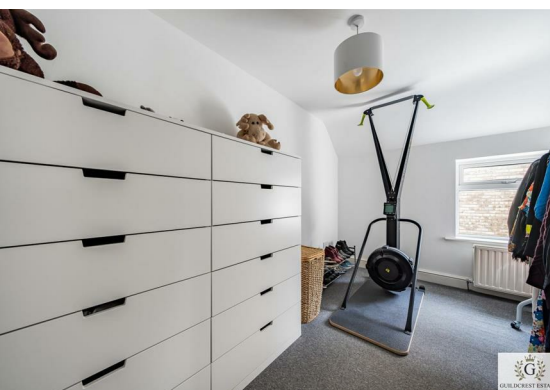
This former factory is set back off Victoria Road, and nestled in between 2 properties and accessed via a graveled driveway which offers ample parking.

On entering the property, you are greeted by a good sized hallway which has lovely ceramic flooring and stairs that lead to the first floor. The kitchen is a good size and located at the front of the house and has 2 double glazed windows giving the room lots of light. There are a matching range of wall and





base units and combi boiler, double glazed door leading out to a walled courtyard garden. There is an ultra modern huge bath/shower room with a white suite comprising of shower, bath, low level WC and wash basin. At the back of the house is the lounge/dining room again a wonderful size and has a beautiful feature fireplace. On the first floor is the landing, 3 double bedrooms and separate WC. The principal bedroom is a nice size room with dual aspect so double glazed window to the side and front and built in wardrobe. Bedroom 2 again is a double room with further built in wardrobes and bedroom 3 is currently being used as a dressing room. You will also find a separate WC.



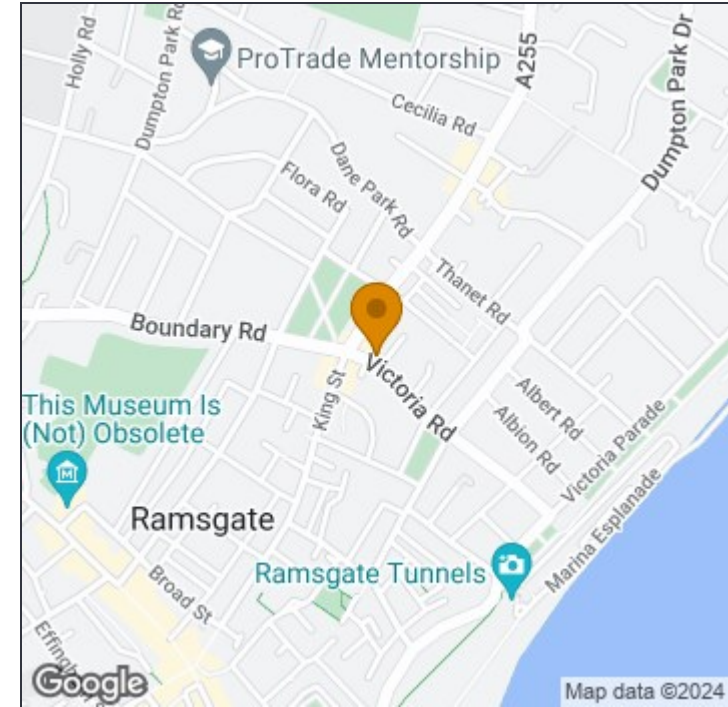
Victoria Road, Ramsgate, CT11

Approximate Area = 1118 sq ft / 103.8 sq m

For identification only - Not to scale



GUILDCREST ESTATES



Disclaimer

These particulars, whilst believed to be accurate are set out as a general outline only for guidance and do not constitute any part of an offer or contract. Intending purchasers should not rely on them as statements of representation of fact, but must satisfy themselves by inspection or otherwise as to their accuracy. No person in this firm's employment has the authority to make or give any representation or warranty in respect of the property.



Floor plan produced in accordance with RICS Property Measurement Standards incorporating International Property Measurement Standards (IPMS2 Residential). © nichecom 2024. Produced for Guildcrest Estates Ltd. REF: 1088441

Manston

The Sales Suite, Office 4 Maple Leaf Manston
Business Park, Ramsgate, Kent, CT12 5GJ

T: 01843 272 200

sales@guildcrestestates.co.uk

<https://www.guildcrestestates.co.uk>