



GUILDCREST ESTATES



99 Hyton Drive  
Deal CT14 9FN

 5  2  2  B





GUILDCREST ESTATES

**Hyton Drive  
Deal CT14 9FN  
£1,950 Per month**

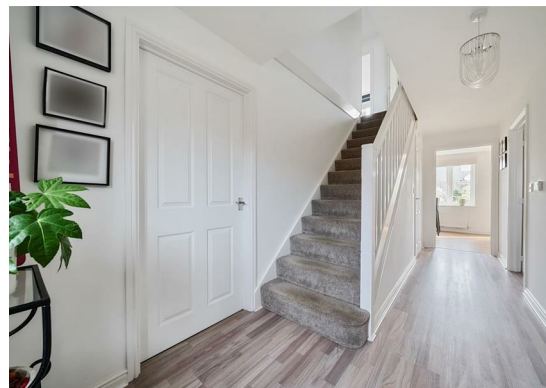
Nestled in the picturesque town of Deal, Kent, for the rental market, this stunning 5-bedroom detached house is available February 2024.

This spacious immaculate house has so much to offer. The living room has a cozy atmosphere, while the open-plan kitchen and dining area creates a hub for family gatherings. The kitchen is equipped with modern appliances and ample counter space. Its open layout promotes interaction with guests or family members. The property includes a versatile study/dining room that can be easily adapted to your needs. Whether you require a dedicated workspace or a formal dining area, this room offers flexibility.

The property also features five generously sized bedrooms, providing ample space for family members. The master bedroom comes with an en-suite shower room, ensuring privacy and comfort. The property boasts a well-maintained rear garden, providing a tranquil retreat for outdoor relaxation and entertaining. A patio area is ideal



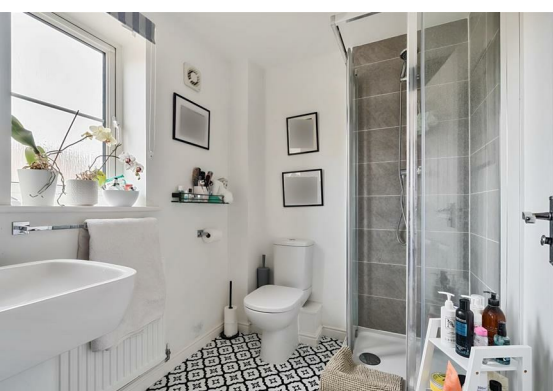




for al fresco dining during the warmer months. This property offers ample parking spaces for 4 vehicles , ensuring convenience.

This 5-bedroom detached house in the heart Deal, presents a unique opportunity to embrace modern living in a tranquil coastal setting. With its ample parking, versatile study/dining room, and spacious interior, it's a property that caters to the diverse needs of a contemporary family. We strongly advised viewing this stunning home ,call to discuss further.

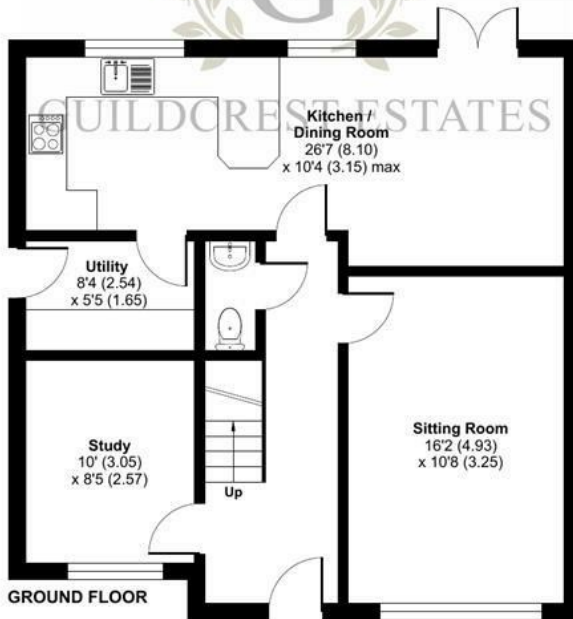
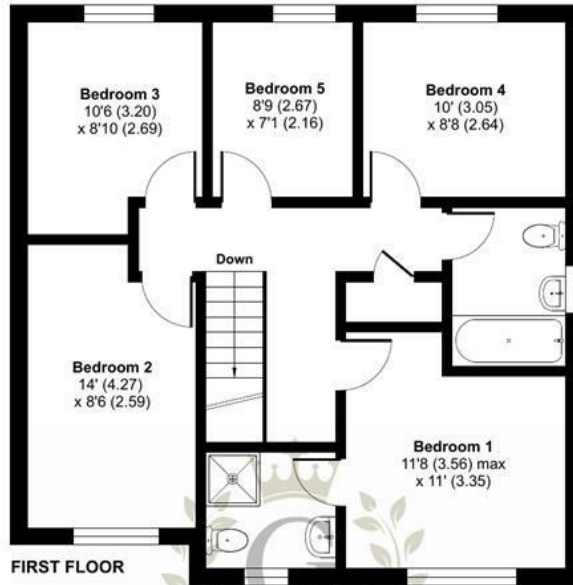
Rent PCM £1950  
Deposit £ 2250  
Council Tax E



# Hyton Drive, Deal, CT14

Approximate Area = 1402 sq ft / 130.2 sq m

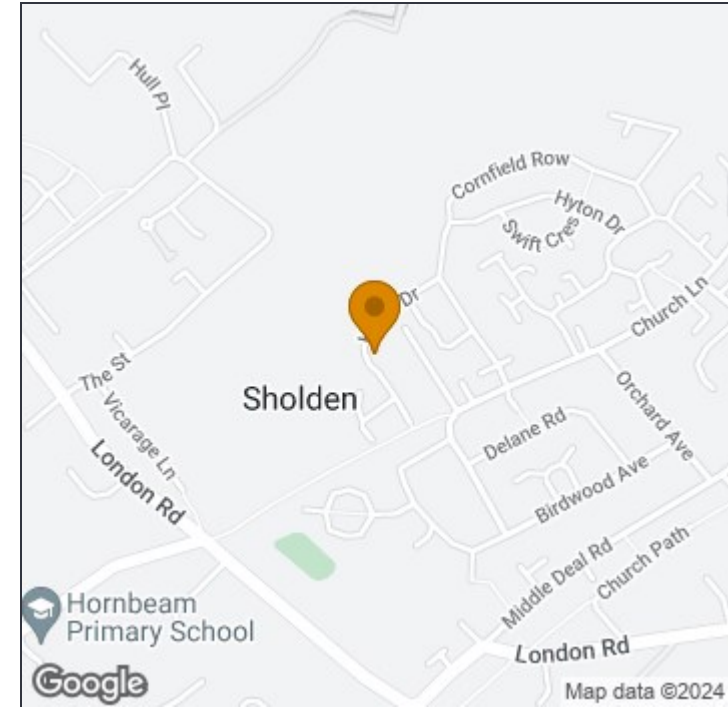
For identification only - Not to scale



Floor plan produced in accordance with RICS Property Measurement Standards incorporating International Property Measurement Standards (IPMS2 Residential). © nichecom 2023. Produced for Guildcrest Estates Ltd. REF: 1025660.



GUILDCREST ESTATES



### Disclaimer

These particulars, whilst believed to be accurate are set out as a general outline only for guidance and do not constitute any part of an offer or contract. Intending purchasers should not rely on them as statements of representation of fact, but must satisfy themselves by inspection or otherwise as to their accuracy. No person in this firm's employment has the authority to make or give any representation or warranty in respect of the property.

### Manston

The Sales Suite, Office 4 Maple Leaf Manston  
Business Park, Ramsgate, Kent, CT12 5GJ

T: 01843 272 200

[sales@guildcrestestates.co.uk](mailto:sales@guildcrestestates.co.uk)

<https://www.guildcrestestates.co.uk>