



GUILDCREST ESTATES



Plot 18 St Stephens Park
, Manston CT12 5ES





GUILDCREST ESTATES

**St Stephens Park
, Manston, CT12 5ES
Prices from £620,000**

****Reserve Now****

Last few remaining

THE HARDWICK

With this 4 bedroom, detached home, big is most definitely beautiful.

With a modern, bright interior, you can enjoy ample room with a large entrance hall, leading to the spacious lounge, open plan kitchen/diner, downstairs cloakroom and utility room. Double doors in the lounge allow you to increase the open plan feel or keep it cosy.

On the first floor, you will find 4 bedrooms, an en-suite and the family bathroom.

With a fully landscaped front garden and rear garden, laid to turf with an Indian Sandstone patio, there is plenty of room to enjoy the good weather. There is also a double garage and driveway for two vehicles.





This stunning new home is all-inclusive, it will be finished and ready for you to move in to, with NO ADDITIONAL COSTS.

This home comes complete with moduleo LVT flooring and luxurious carpet throughout, oak internal doors and bespoke, fully fitted Roma kitchens with integrated appliances and quartz worktops.

The fully tiled bathrooms and en-suites feature modern white sanitaryware, with free standing baths, separate showers and beautiful vanity units. Also included are illuminated mirrors and heated towel rails.

With everything taken care of for you, this new, energy-efficient house gives you the perfect home to start creating new memories. So why wait? Make your move today and start enjoying your new life on the East Kent coast at St Stephens Park.

Experience luxury and comfort in this remarkable home.



G
 GUILDCREST ESTATES
St Stephens Park
 PENNINGTON
 HIGHGROVE
 KNOLE
 HOLLINGDEAN
 LOMOND
 HEATON
 HARDWICK
 MULVIHILL
 ASTLEY
 STIRLING
 THORNDON

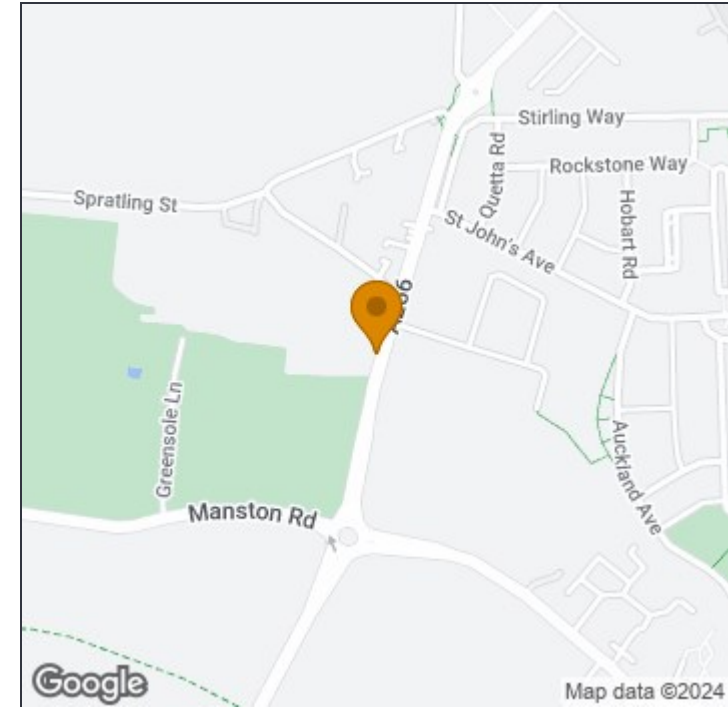
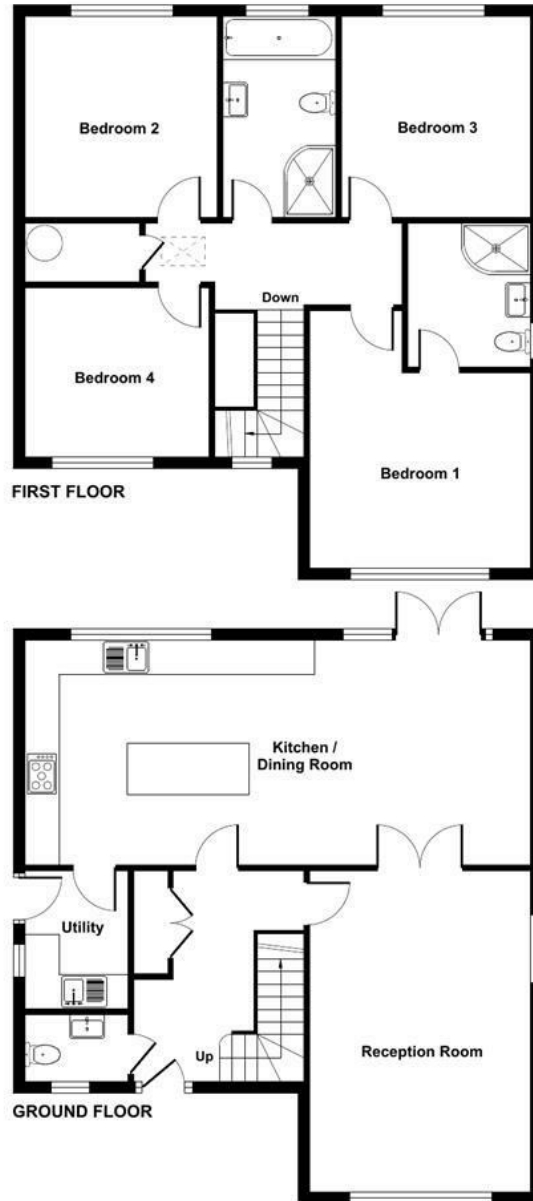


Ellington Mews, Ramsgate, CT12

For identification only - Not to scale



GUILDCREST ESTATES



Disclaimer

These particulars, whilst believed to be accurate are set out as a general outline only for guidance and do not constitute any part of an offer or contract. Intending purchasers should not rely on them as statements of representation of fact, but must satisfy themselves by inspection or otherwise as to their accuracy. No person in this firm's employment has the authority to make or give any representation or warranty in respect of the property.



Floor plan produced in accordance with RICS Property Measurement Standards incorporating International Property Measurement Standards (IPMS2 Residential). © nichecom 2023. Produced for Guildcrest Estates Ltd. REF: 962975

Manston

The Sales Suite, Office 4 Maple Leaf Manston
Business Park, Ramsgate, Kent, CT12 5GJ

T: 01843 272 200

sales@guildcrestestates.co.uk

<https://www.guildcrestestates.co.uk>