



12 Keresley Close

, Solihull, B91 2AD

Offers over £200,000



12 Keresley Close

, Solihull, B91 2AD

Offers over £200,000



HS Homes are proud to present this immaculate and newly renovated 2 bed second floor apartment situated in the heart of Solihull. Keresley Close is situated off Lode Lane in a quiet cul-de-sac location next to Solihull Hospital and just half a mile walk to Solihull Town Centre. This apartment comes with 2 parking spaces and a visitor space too. This property is being sold CHAIN FREE.

Communal Entrance Hallway

Through a secured communal entrance hallway, the apartment is situated on the 1st floor.

Entrance Hallway

The entrance hall has two storage cupboards, a radiator, LED downlights and laminate flooring throughout.

Lounge Diner

The lounge diner has 2 double glazed windows to the side and a media wall. There is a radiator, LED downlights and carpet throughout.

Kitchen

The kitchen has a combination of wall and floor mounted cabinets with an integrated oven and 4 ring induction hob with extractor and space for a washing machine and fridge freezer. The kitchen has a double-glazed window to the side with LED downlights and cream floor tiles throughout.

Bedroom One

The main bedroom has a double-glazed window to the side with fitted wardrobes. There is a radiator, ceiling light and carpets throughout.

Bedroom Two

The second bedroom has a double-glazed window to the side and built in wardrobes. There is a radiator, ceiling light and carpet throughout.

Bathroom

The newly fitted bathroom comprises of a bath, walk in double shower cubicle, toilet and wash hand basin. With a double-glaze obscured glass window to the side, LED downlights and floor and wall tiles throughout.

Garage

There is a garage allocated to the apartment which is secure and has an up and over garage door.

The Location

Situated less than half a mile from Solihull Town Centre which offers a wide variety of shops ranging from high street names, designer brands to small independent boutiques. It also offers an excellent selection of dining experiences too, ranging from fine dining, contemporary cafes to local traditional pubs.

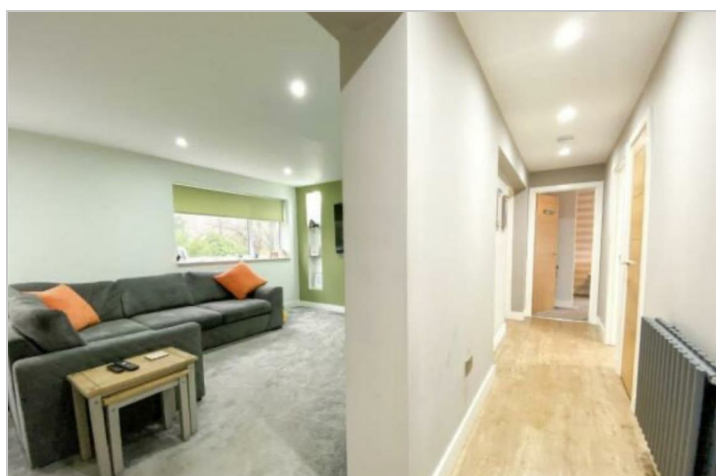
If you have a young family, schools will be a major consideration for you. Keresley Close is situated in catchment for a variety of good and outstanding primary and secondary schools.

If it's the outdoors you prefer, you can find plenty of nature reserves, parks and canal walks nearby. Solihull borough has over 150 miles of public rights of way, so getting outdoors and enjoying the wildlife couldn't be easier. Malvern and Bruton Park is on your doorstep which offers wide open recreation spaces and natural wildlife of Bruton, to the formal

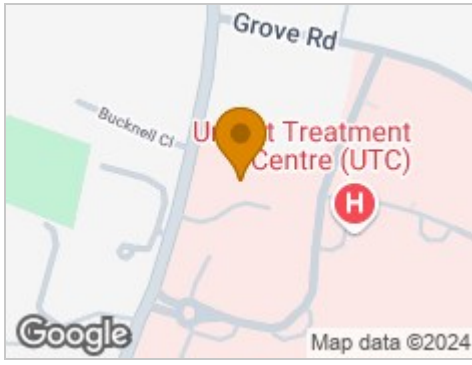
gardens, café and play area of Malvern, you will always find something to enjoy here.

With excellent transport links to the M42, M40, M6 and M5, getting around the UK is simple. For those who don't drive, then Solihull Railway Station is situated just under half a miles from Keresley Close, which offers easy access to both Birmingham City Centre and London. If you want to escape the UK then Birmingham airport is 8 miles away, with over 150 direct flights running daily.

Solihull is the perfect location if you enjoy a countryside lifestyle and being close to all local amenities.



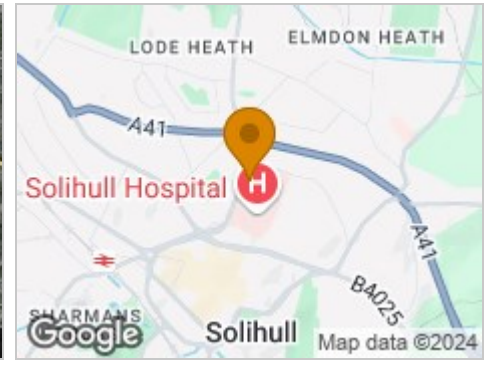
Road Map



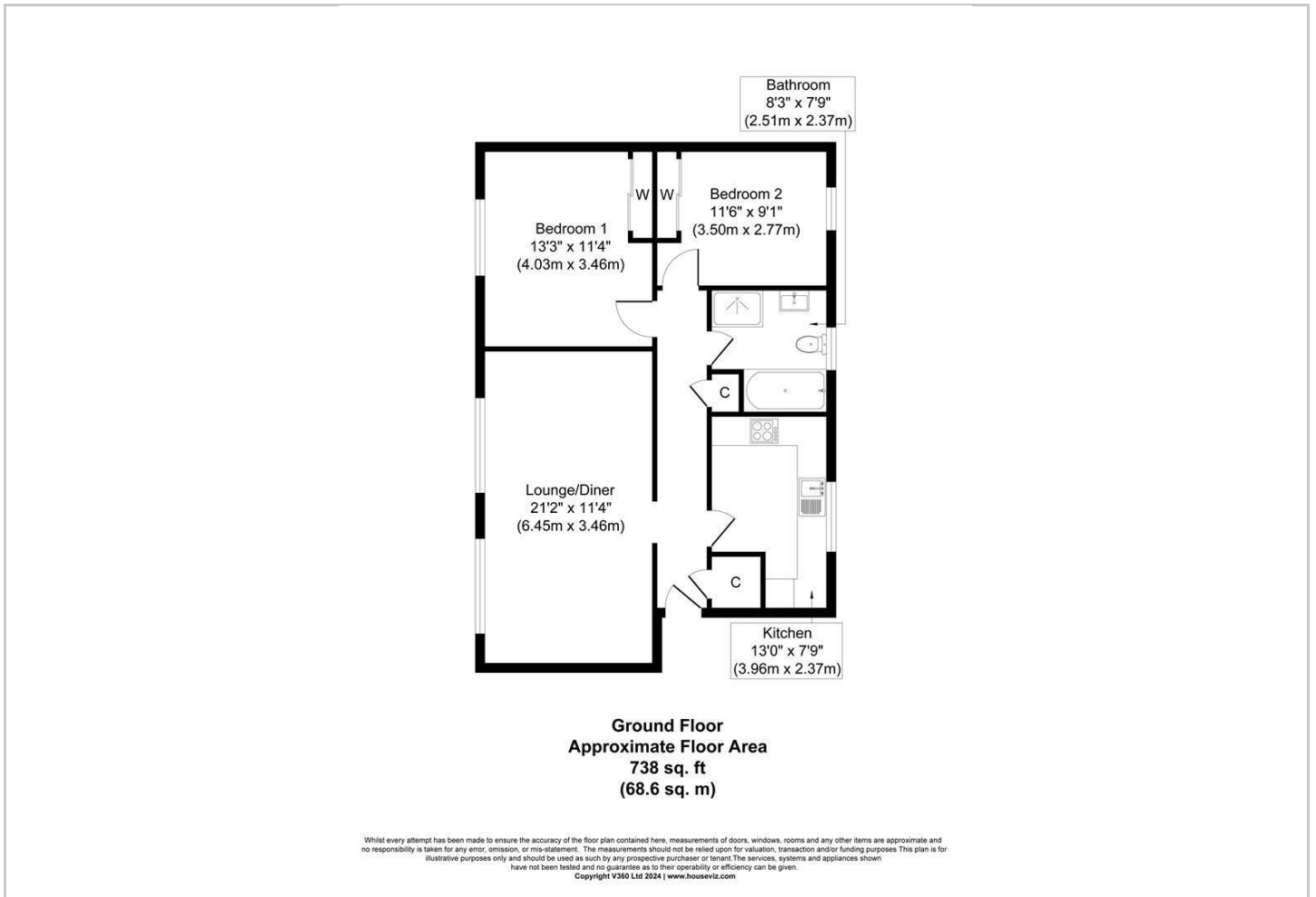
Hybrid Map



Terrain Map



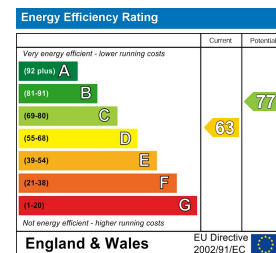
Floor Plan



Viewing

Please contact our HS Homes of Solihull Office on 0121 430 4448 if you wish to arrange a viewing appointment for this property or require further information.

Energy Efficiency Graph



These particulars, whilst believed to be accurate are set out as a general outline only for guidance and do not constitute any part of an offer or contract. Intending purchasers should not rely on them as statements of representation of fact, but must satisfy themselves by inspection or otherwise as to their accuracy. No person in this firm's employment has the authority to make or give any representation or warranty in respect of the property.